



YOUTH EMPLOYMENT

PROMOTION OF YOUTH EMPLOYMENT IN FRAGILE SETTINGS

7 – 11 OCTOBER 2019
TURIN, ITALY

Information Note

PROMOTION OF YOUTH EMPLOYMENT IN FRAGILE SETTINGS

Building peace and resilience
through the promotion of decent work

TABLE OF CONTENTS

OVERVIEW	3
WHAT	3
WHY	4
WHO	4
HOW TO APPLY?	5
PRICE	5
PRACTICAL INFORMATION	6

OVERVIEW

The course provides participants with a range of integrated approaches, tools, methodologies and case studies used in real-life situations to promote youth employment and decent work in situations of crisis including armed conflict, natural disasters, rapid environmental degradation, and forced displacement of persons. This year the course will also explore best international practices on how to promote access of youth refugees, asylum seekers, returnees and host communities to the labour market. The course includes a distance learning component and study visits in Turin.

WHAT

WHAT TOPICS DOES THIS COURSE COVER?

- **Employment and Decent Work in Fragile Settings:** A Compass to Orient the World of Work.
- **ILO's normative and operational response to build peace and resilience and theory of change from employment to peace through decent work**
- **Territorial and sectorial analysis:** mapping organizations, assessing opportunities and challenges and identifying sustainable solutions to integrate youth and refugees in the labour market and improving their resilience
- **Promotion of skills and entrepreneurship development:** in fragile and conflict-affected situations
- **Labour market integration of refugees:** practical approaches and review of international best practices
- **Effective social dialogue, institutional capacity development and South-South collaboration in fragile settings**

WHAT WILL I LEARN?

Participants will broaden their knowledge on the course topics with the guidance of the course faculty.

- Recommendation 205 on Employment and Decent Work for Peace and Resilience; ILO's theory of change to promote peace and resilience through employment and ILO's Flagship Programme on Jobs for Peace and Resilience
- International good practices on fostering labour market integration of youth with a special focus on refugees, asylum seekers, returnees and host communities
- Profiling of target groups, territorial analysis and sectorial analysis for labour market integration
- Promotion of market-driven livelihoods opportunities for youth, refugees and host communities in the labour market

WHAT WILL I BE ABLE TO DO?

By gaining knowledge on a wide array of notions, methods and tools to promote decent work and youth employment in situations of fragility, participants will be able to:

- Reflect on current good practices and experiences on the labour market integration of youth, refugees and host communities in fragile settings
- Understand the labour market challenges and opportunities to foster youth employment in fragile settings
- Envision feasible and sustainable strategies to promote youth employment in fragile settings
- Engage in potential partnerships and South-South collaboration to promote youth employment in fragile settings
- Design strategies to promote the integration of youth, refugees and host communities in the labour market

WHY

The Turin Centre is known for its innovative learning experiences and practice-oriented training methodologies.

- Learning materials are **accessible online** during and after the course
- **Study visits** provide a practical picture of how ‘access to work and vocational training at local level’ can promote labour market integration of youth refugees
- A blend of **theoretical and action-oriented sessions** will enhance knowledge while fostering exchange

WHO

WHO TAKES THIS COURSE?

Government officials, ILO’s social partners and development practitioners working in complex contexts (including natural disasters, armed conflicts, rapid environmental degradation and forced displacement of persons) with an interest to integrate youth, refugees and host communities in the labour market and to promote peace and resilience.

WHO ARE THE INSTRUCTORS?

This course is designed and delivered by international experts from the ILO, ITCILO and high level practitioners working in the fields of access of youth employment to the labour market.

HOW TO APPLY?

Early application is strongly recommended since admission is competitive and space is limited! Interested candidates are invited to register on-line through this link:

bit.ly/2ZkyuAi

The online application should be supported by a nomination letter from the sponsoring institution.

We cannot process your application unless you send us an official nomination letter from your employer or the sponsoring institution, with an indication of how your participation and travel costs will be met. You may upload it when submitting the registration form or send it separately at jpr@itcilo.org.

We highly encourage the participation of women and persons with disabilities.

The deadline for applications is **23 August 2019!**

PRICE

The course is fee-paying. The total cost is €2,250 and it is composed of the following:

- Tuition cost:€1,615
- Subsistence cost:€635

The tuition cost covers the cost of programme development and management, secretarial and administrative support costs, the use of training facilities and teaching equipment, office supplies and training materials. An emergency medical insurance is also included.

The participant's subsistence cost covers full board and lodging at the ITCILO campus.

Travel between the participant's home and the course venue is not included.

After the deadline, the enrolled participants will receive official confirmation letters and the bank references for the payment.

For detailed information regarding payment, cancellation and refunds, please consult our policy: <https://www.itcilo.org/en/training-offer/how-to-apply>

A limited number of partial fellowships will be available. Fellowships will be allocated on a case-by-case basis.

PRACTICAL INFORMATION

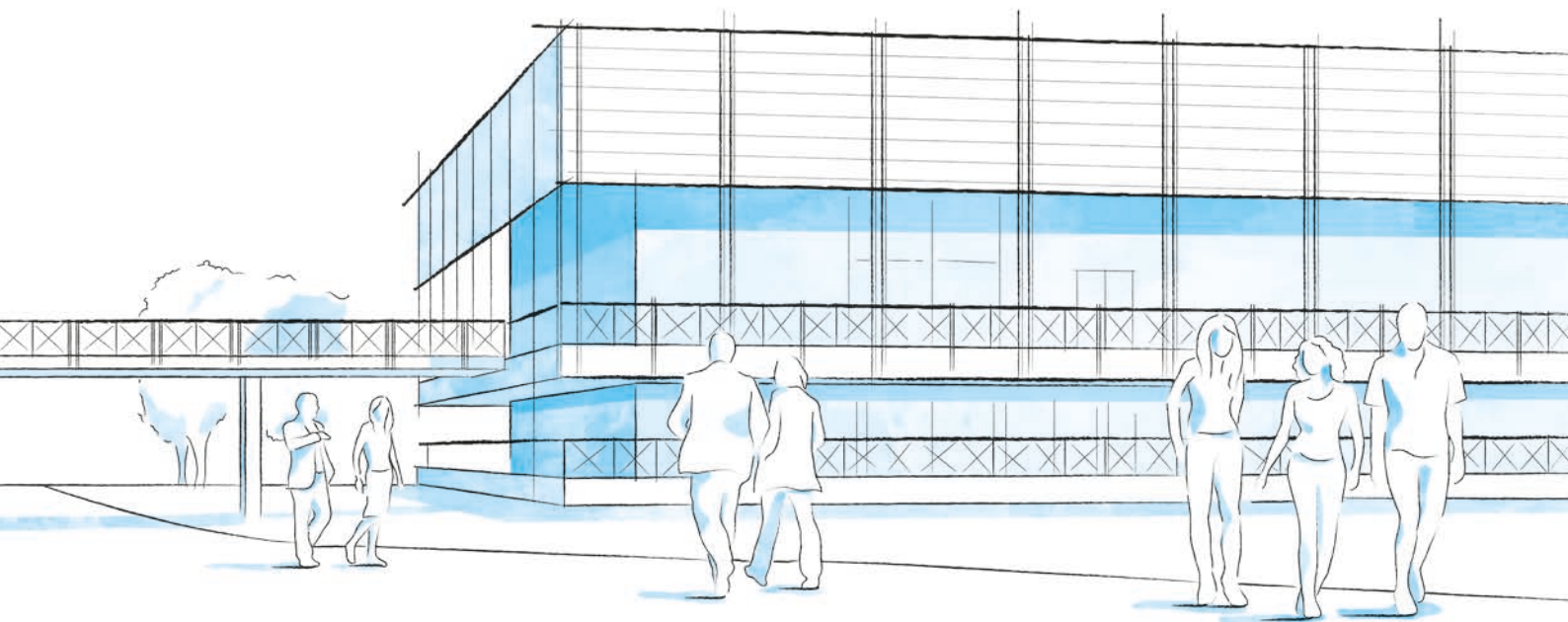
Language: The course will be held in English.

Certificate: An ITCILO Certificate will be awarded at the completion of the course.

Location (Face to face phase): ITCILO Campus in Turin, Italy

Visa: Please note that if a Schengen visa for Italy is needed, the time required is on average at least three weeks. More information on travel and visa is available here: <https://www.itcilo.org/en/training-offer/how-to-apply/travel-and-visa>

Contact for inquiries: jpr@itcilo.org



CAMPUS LIFE

A THRIVING UNITED NATIONS CAMPUS AND COMMUNITY OF PROFESSIONAL PEOPLE FROM AROUND THE WORLD

- **Three organizations** from the United Nations system on campus
- **More than 300 training courses** and activities in a stimulating international environment
- **Thousands of participants** from all over the world

ENVIRONMENT AND SURROUNDINGS

Grab a campus bicycle and explore the Turin Centre.

Located in a leafy park on the banks of the Po River, it's a great place for study and collaboration. Experience innovative learning and training methods in modern classrooms equipped with simultaneous translation services.

HOUSING, DINING, AND MORE

Comprising more than 280 private dormitories, the **Turin Campus provides a broad range of services for course participants and partners** including a free-flow restaurant, bank, travel agency, laundromat, post office, gym, medical services and a reception desk open 24/7.

COMMUNITY ENGAGEMENT AND DIVERSITY

Participants can enjoy social events organized by the Turin Centre as well as by their course facilitators.

Whether on or off campus, people from different cultural backgrounds have the opportunity to listen to live music together, cook and share traditional foods, or team up to play games and network.

INFO

FOR FURTHER INFORMATION PLEASE CONTACT

International Training Centre of the ILO

Jobs for Peace and Resilience Programme
Viale Maestri del Lavoro, 10
10127 Turin – Italy

jpr@itcilo.org
www.itcilo.org

Made of paper awarded the European Union Eco-label,
reg.nr FR/011/002, supplied by International Paper. 