



SKILLS DEVELOPMENT

SECTORAL APPROACHES TO SKILLS DEVELOPMENT

23 – 27 SEPTEMBER 2019
TURIN, ITALY



SECTORAL APPROACHES TO SKILLS DEVELOPMENT

PRIORITIZATION, DEFINITION, AND COLLABORATION

OVERVIEW

SNAPSHOT OF THE COURSE

Skills are a key component that help nations unlock economic development and prosperity. A sectoral approach to skills development can address different skills issues within the labour market of a specific economic sector. This course, organized with ILO's Employment Department, Skills and Employability branch and the European Training Foundation, helps participants recognize current and future needed skills at the sectoral level and understand how action at the sector level is an important element of industry engagement in skills development. Are you ready to take a sectoral approach to policymaking and planning in skills? Join this course today.



PLACE

TURIN, ITALY



DATES

23 – 27 SEPTEMBER 2019



COLLABORATIVE LEARNING

ONLINE RESOURCES



LANGUAGES

ENGLISH



APPLICATION DEADLINE

16 AUGUST 2019

WHAT

WHAT TOPICS DOES THIS COURSE COVER?

This week-long course includes interactive sessions with participatory exercises, as well as presentations by subject matter specialists.

- **Needs analysis** through sector prioritization, sector definition, and collaborative mechanisms
- Relevant **institutional arrangements**, such as governance, services, and sectoral skills councils
- Economic sectors and skills **financing**, per sector

WHAT WILL I LEARN?

Participants learn about sectoral approaches for adequate policy making and planning on skills development.

- All about the **drivers of change** that impact the skills supply and demand at a sectoral level
- **Methodologies, mechanisms, and modalities** needed to identify labour market imbalances
- How to recognize which skills will be needed in the future, and act through a **macroeconomic policy framework**

WHAT WILL I BE ABLE TO DO?

The goal of this course is to help participants understand all the elements of sectoral skills development, so they can imagine better policies for the future of work.

- Analyze different methods and tools related to **quantitative and qualitative methods** to identify labour market imbalances
- Utilize different sectoral **skills financing mechanisms and governance systems**, as well as policy mechanisms and institutional arrangements
- Adopt a comprehensive **sectoral approach** to drive positive change for skills development

WHY

WHY SHOULD I JOIN?

The Turin Centre is known for its unconventional and effective learning methodologies.

- This course is **highly participatory** and facilitates discussions between experts and participants.
- Different learning methodologies, interactive presentations, and group exercises allow for **knowledge-sharing** and reflection.
- Participants are encouraged to bring **interesting or relevant documents**, such as country-specific skills anticipation methodologies, to share.

WHO

WHO TAKES THIS COURSE?

- Policy makers and technical advisors for governments
- Members and technical staff of skills councils, national TVET institutions, or similar
- Managers of institutions responsible for labour market information collection and analysis
- Staff of public employment services
- Representatives of workers' and employers' organizations
- Staff of international cooperation agencies

HOW TO APPLY

Go to <https://bit.ly/2IWWfrA> to apply before **16 August 2019**.

PRICE

Tuition: €1,615

Subsistence: €635

Total: €2,250

LEARN DIFFERENTLY

The Centre's training methods include case studies and roleplay exercises

HIGH-LEVEL RESOURCES

Learn from ITCILO trainers and ILO and ETF specialists immersed in the field of skills development

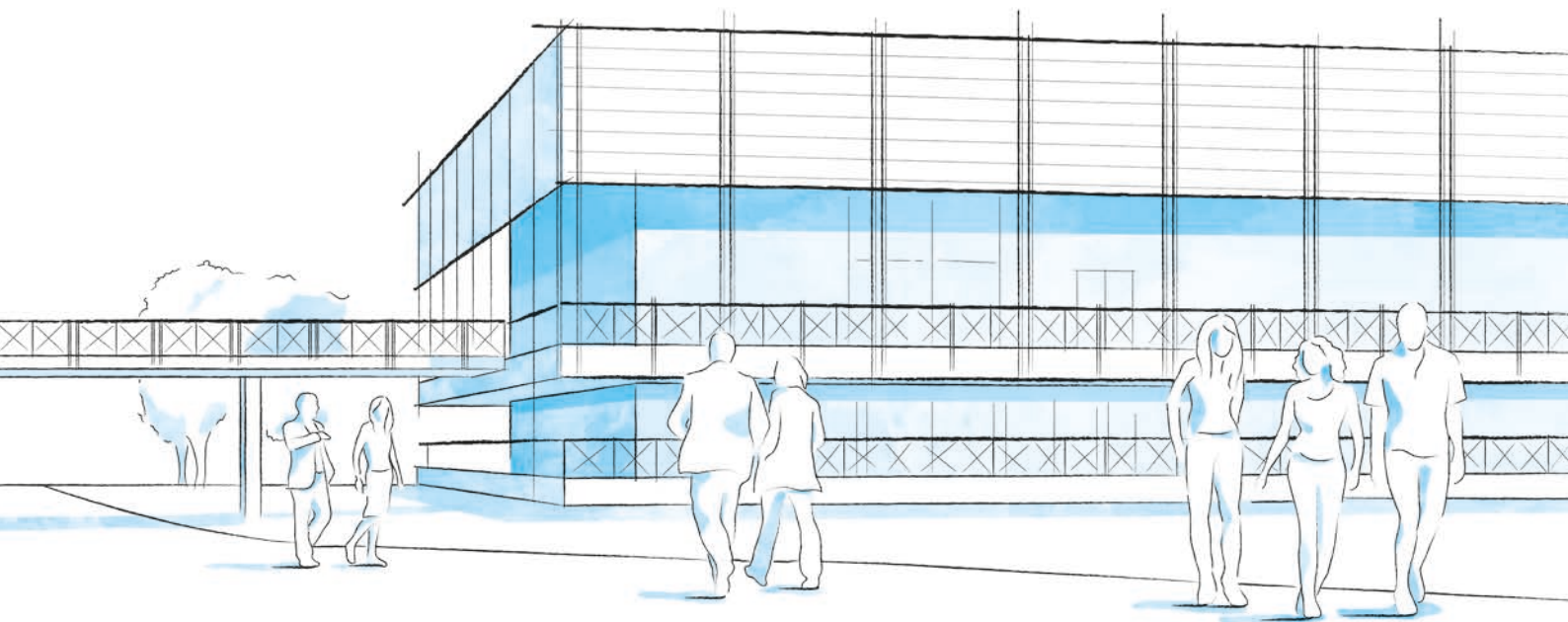
PROVEN PROCEDURES

This course is designed based on internationally recognized strategies and standards



SCAN THE QR CODE
OR VISIT

bit.ly/2Y7GmVP



CAMPUS LIFE

A THRIVING UNITED NATIONS CAMPUS AND COMMUNITY OF PROFESSIONAL PEOPLE FROM AROUND THE WORLD

- **Three organizations** from the United Nations system on campus
- **More than 300 training courses** and activities in a stimulating international environment
- **Thousands of participants** from all over the world

ENVIRONMENT AND SURROUNDINGS

Grab a campus bicycle and explore the Turin Centre.

Located in a leafy park on the banks of the Po River, it's a great place for study and collaboration. Experience innovative learning and training methods in modern classrooms equipped with simultaneous translation services.

HOUSING, DINING, AND MORE

Comprising more than 280 private dormitories, the **Turin Campus provides a broad range of services for course participants and partners** including a free-flow restaurant, bank, travel agency, laundromat, post office, gym, medical services and a reception desk open 24/7.

COMMUNITY ENGAGEMENT AND DIVERSITY

Participants can enjoy social events organized by the Turin Centre as well as by their course facilitators.

Whether on or off campus, people from different cultural backgrounds have the opportunity to listen to live music together, cook and share traditional foods, or team up to play games and network.

INFO

FOR FURTHER INFORMATION PLEASE CONTACT

International Training Centre of the ILO

Employment Policy and Analysis Programme (EPAP)
Viale Maestri del Lavoro, 10
10127 Turin – Italy

Mr. Mostafa Mohamed
Activity Manager
skillsdevelopment@itcilo.org
www.itcilo.org

The ETF, as a decentralised agency of the EU, is a non-profit entity. The course fees are charged solely by ITCILO to cover for the tuition fees and subsistence costs specified.

COURSE CODE: A9012098

Made of paper awarded the European Union Eco-label, reg.nr FR/011/002, supplied by International Paper. 