

Lançamento da Estratégia Regional para a Extensão da Proteção Social

Financiar a Proteção Social para construir a Agenda 2030

Departamento de Desenvolvimento Social
17 de novembro de 2021



Building a Caring Society. Together.

www.dsd.gov.za



social development

Department:
Social Development
REPUBLIC OF SOUTH AFRICA



Visão geral da África do Sul

- PRMS – PIB R8 000/capita
- 58 milhões de pessoas
- Pobreza:
 - 20,6% – 32,1% @FPL (linha de pobreza alimentar)
 - 32,6% – 45,2% @LBPL (limite inferior da linha de pobreza)
 - 48,2% – 59,3% @ UBPL (limite superior da linha de pobreza)
- Desemprego:
 - 34,4% definição estrita (7,8 milhões)
 - 44,4% definição alargada
- Desigualdade: Gini 0,65
- Despesa social
 - saúde, educação, assistência social, habitação e serviços básicos
 - ~ 60% do orçamento
 - ~ 13,5% do PIB
- Assistência social
 - ~16% do orçamento
 - ~3,5% do PIB



Figure 2: Mean monthly household disposable income, by per capita household disposable income decile

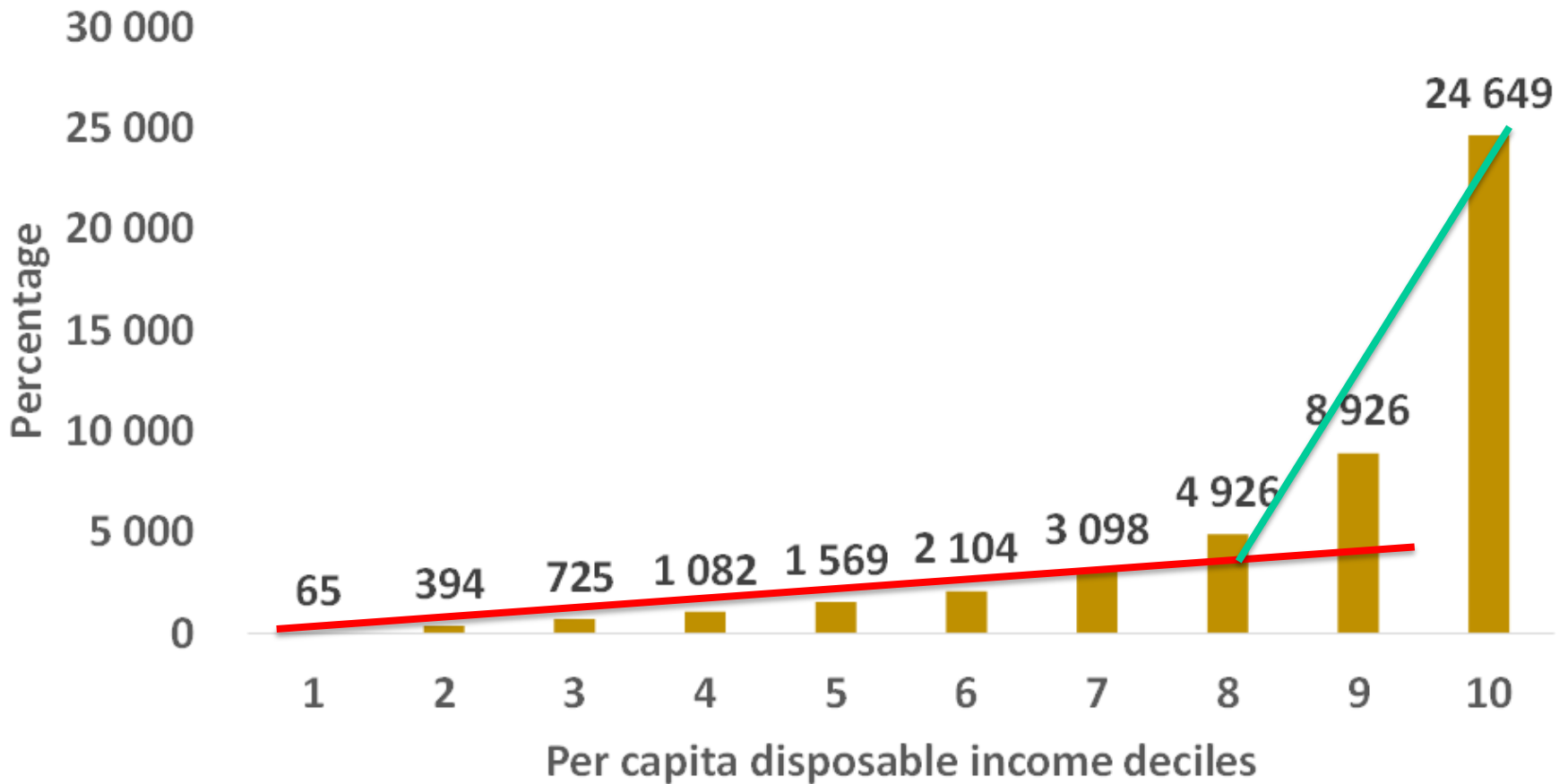
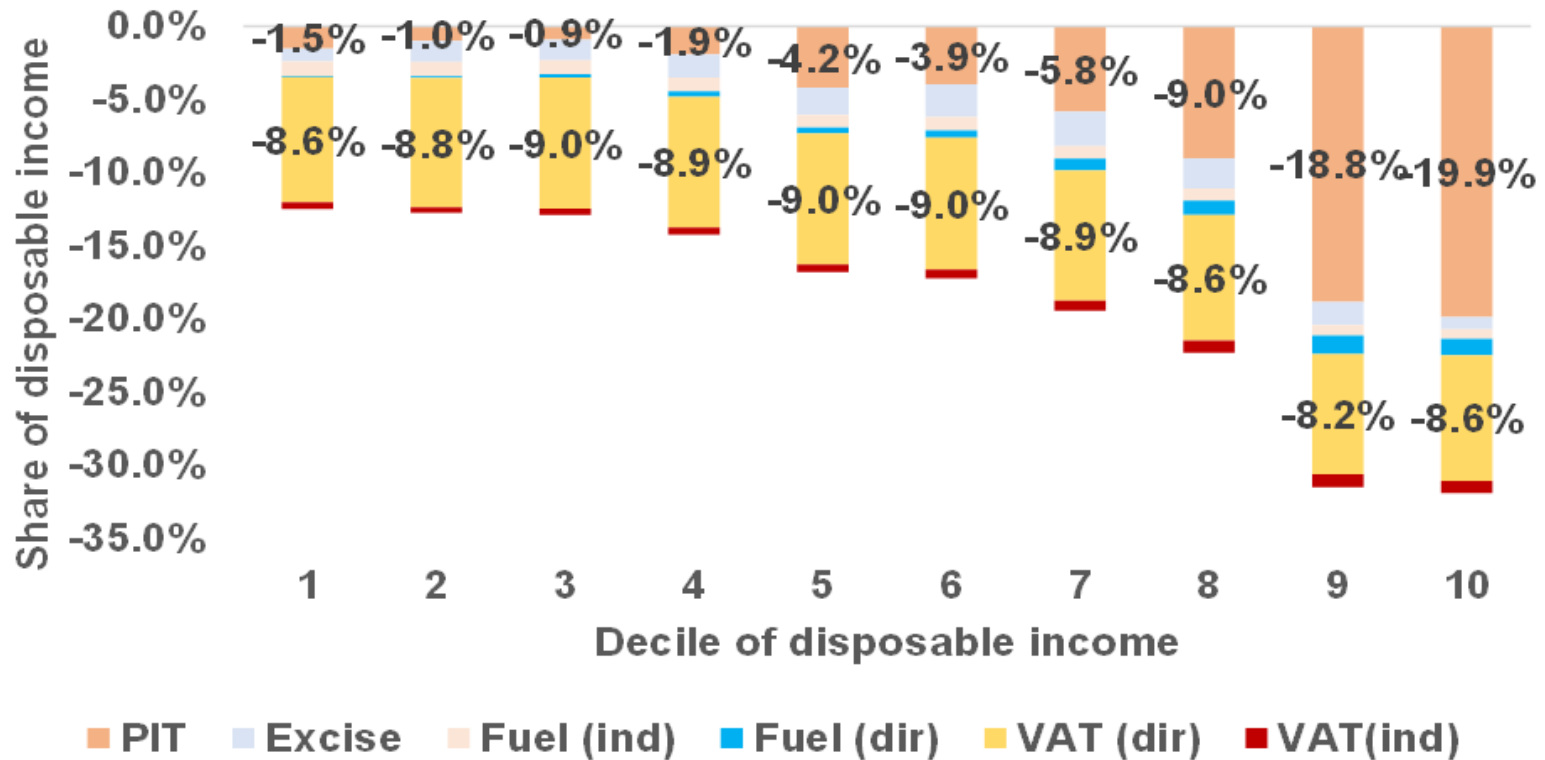


Figure 6: The incidence of direct and indirect taxes across the income distribution



Source: Calculations by Maya Goldman using the 2014 Living Conditions Survey (see Goldman, Woolard, & Jellema, 2020).

Figure 7: Share of total tax revenue paid for different taxes, by per capita household disposable income decile

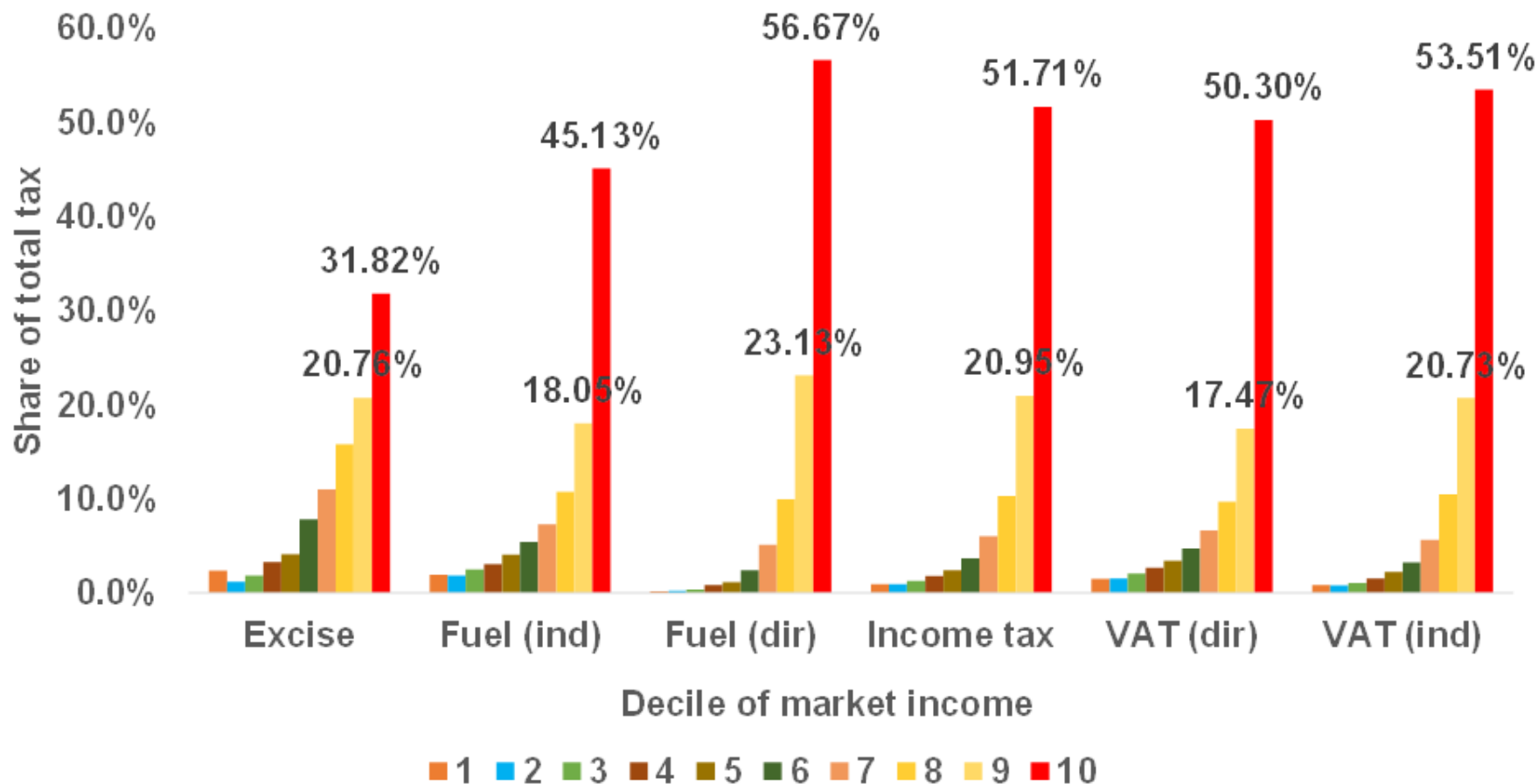


Table 9: Number of social grants beneficiaries by grant type, 2021

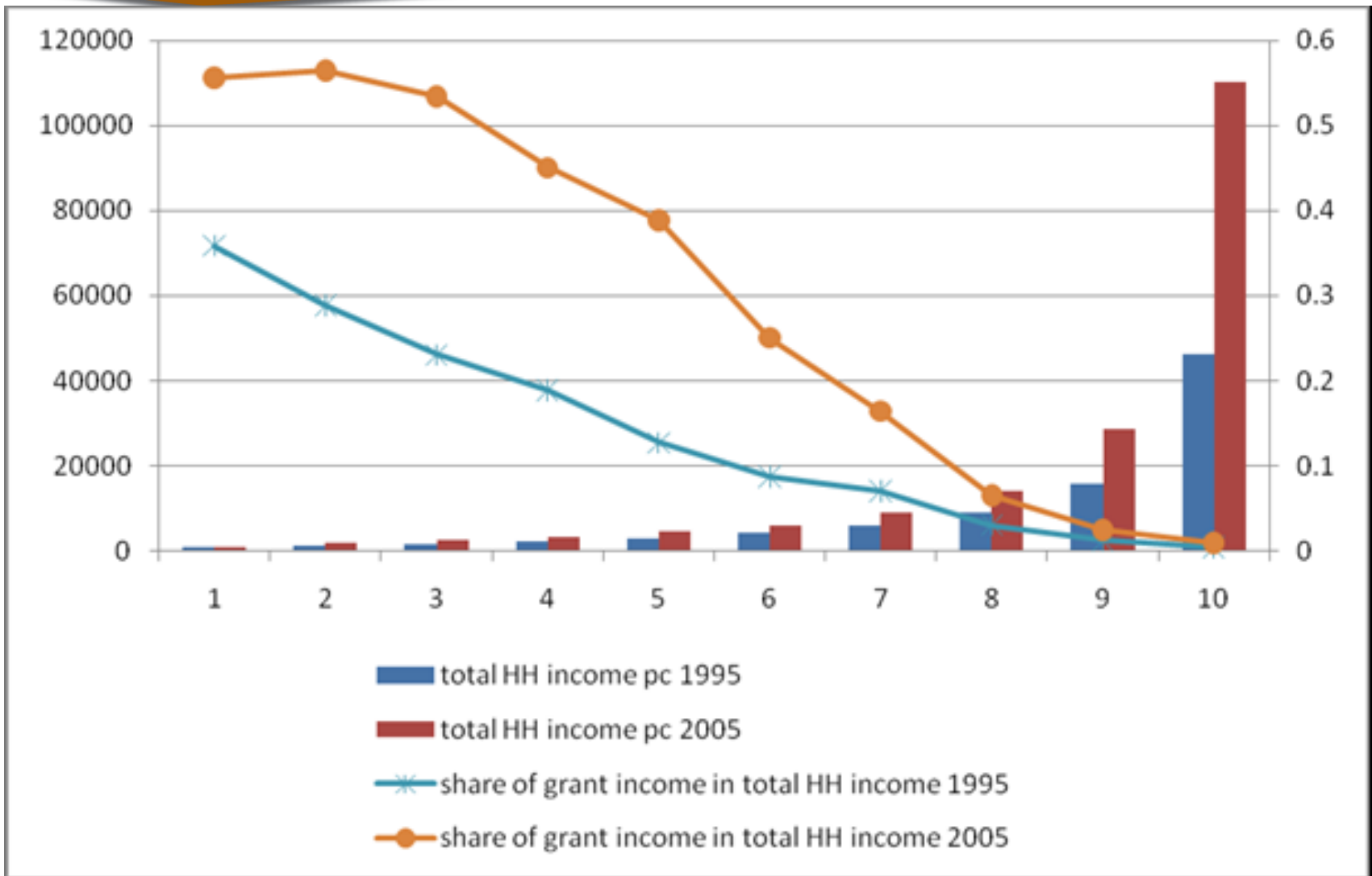
Social grant	Beneficiaries	% of total	R/month
Child Support Grant (CSG)	12,992,589	70.5%	460
Older Person's Grant (OPG)	3,722,675	20.2%	1,890
Disability Grant (DG)	997,752	5.4%	1,890
Foster Care Grant (FCG)	309,453	1.7%	1,050
Grant in Aid (GIA)	267,912	1.5%	460
Care Dependency Grant (CDG)	150,151	0.8%	1,890
War Veteran Grant (WVG)	40	0.0%	1,910
Total	18,440,572	100.0%	

Sources: SASSA 2021, **Table 2** (Beneficiaries, as of end March 2021); Mboweni 2021 (Rands per month, from April 2021)

- 185 mil milhões Rand por ano
- Alívio social das dificuldades associadas à COVID – 350 Rand;
9,5 milhões de pessoas

Building a Caring Society Together.

www.dsd.gov.za



Building a Caring Society Together.

www.dsd.gov.za



social development

Department:
Social Development
REPUBLIC OF SOUTH AFRICA

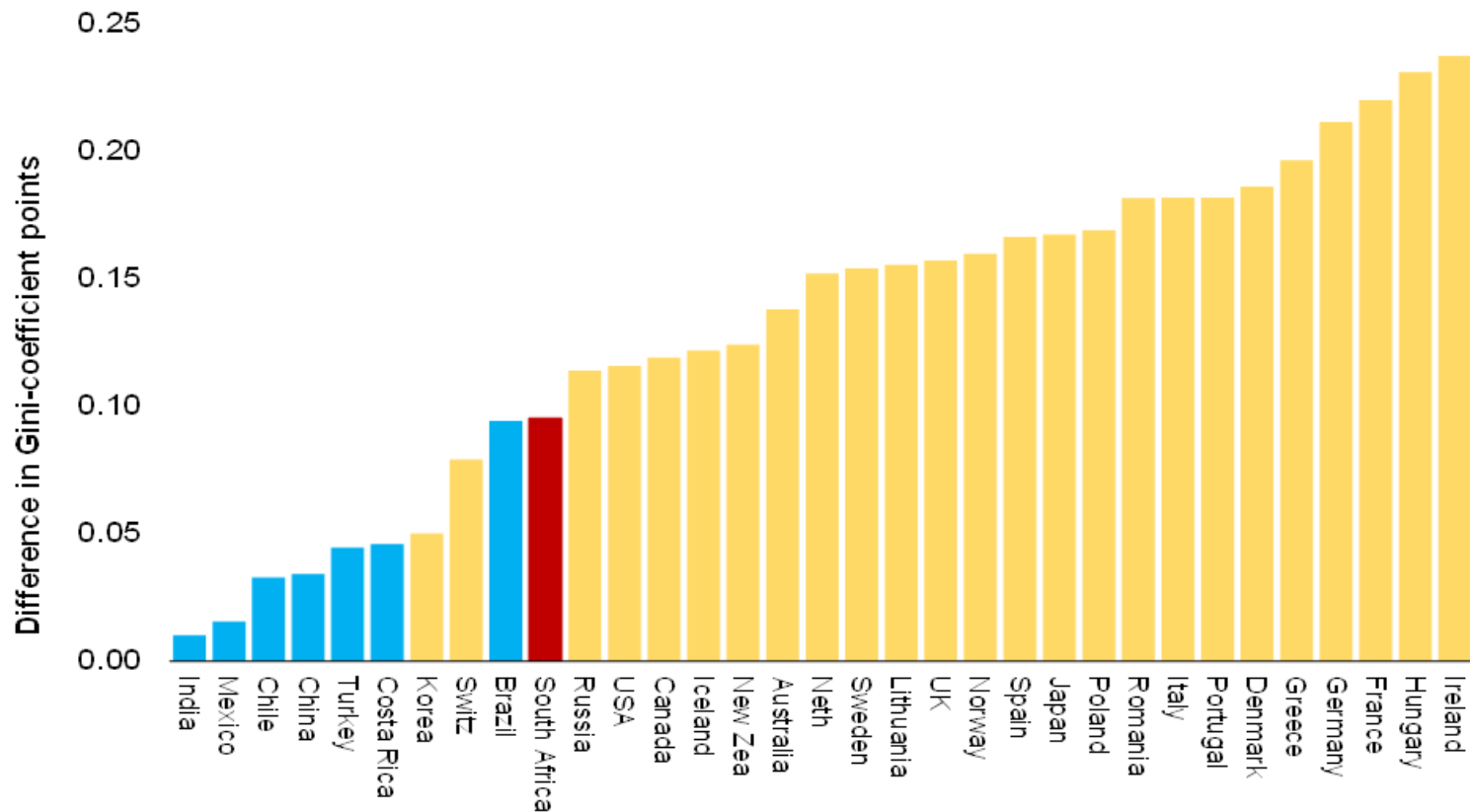


Bhorat e Van der
Westhuizen, 2011

sassa
SOUTH AFRICAN SOCIAL SECURITY AGENCY

É possível crescer, desenvolver e ser mais “eficiente” e, em simultâneo, levar a cabo uma redistribuição fiscal significativa.

Figure 10: Fiscal effort (percentage point change in the Gini coefficient resulting from taxes and transfers)



Building a



social development

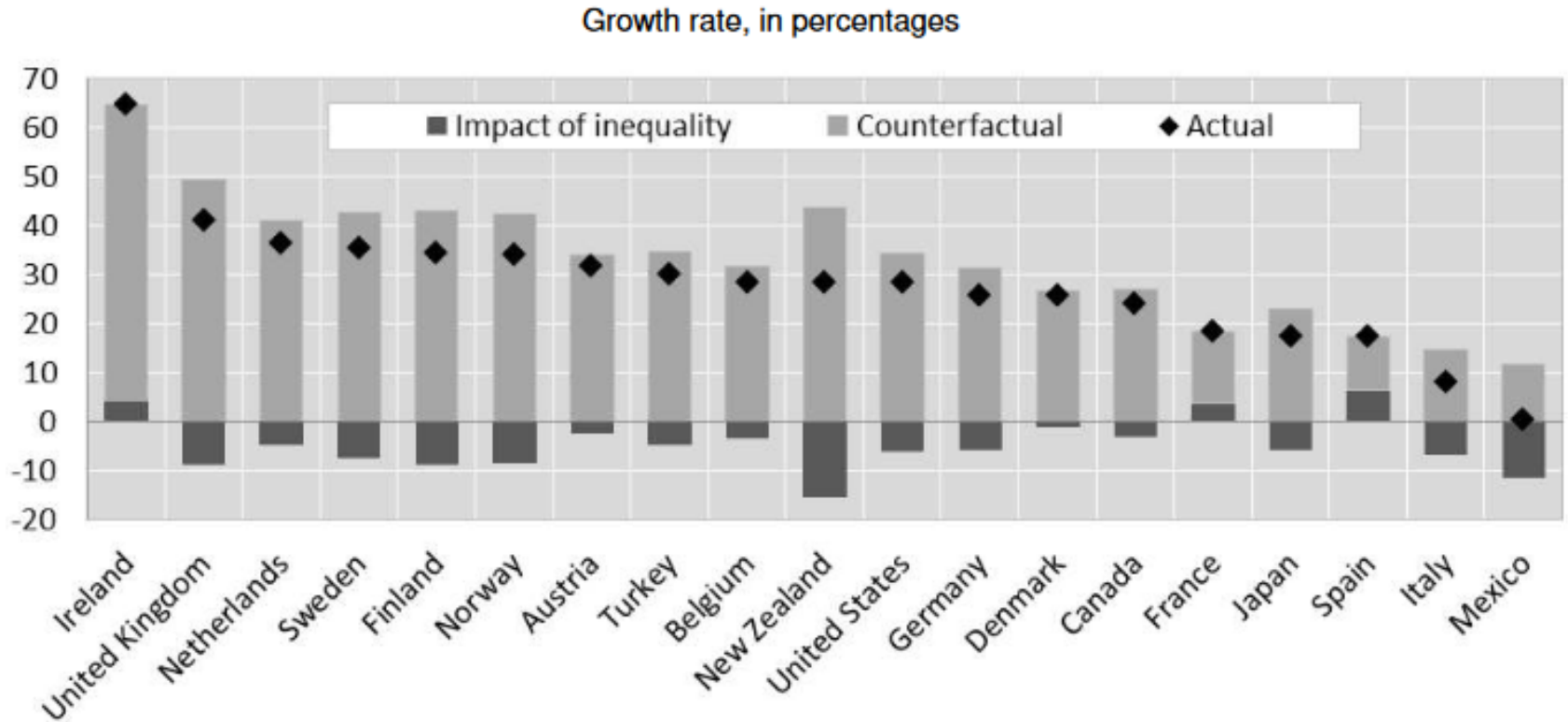
Department:
Social Development
REPUBLIC OF SOUTH AFRICA



v.dsd.gov.za



Figure 3. Estimated consequences of changes in inequality on cumulative per capita GDP growth (1990-2010)



Health and social problems are worse in more unequal countries

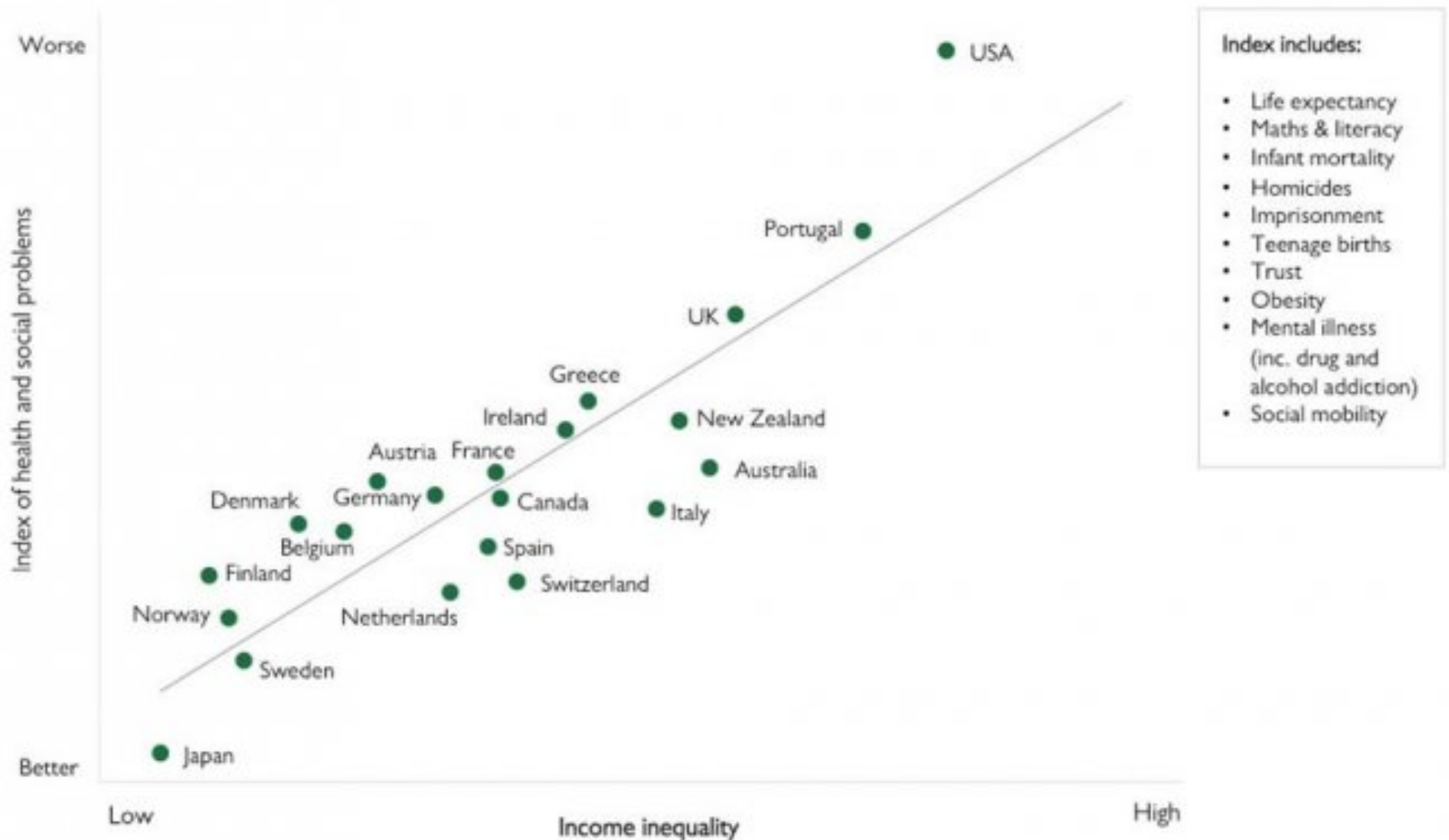
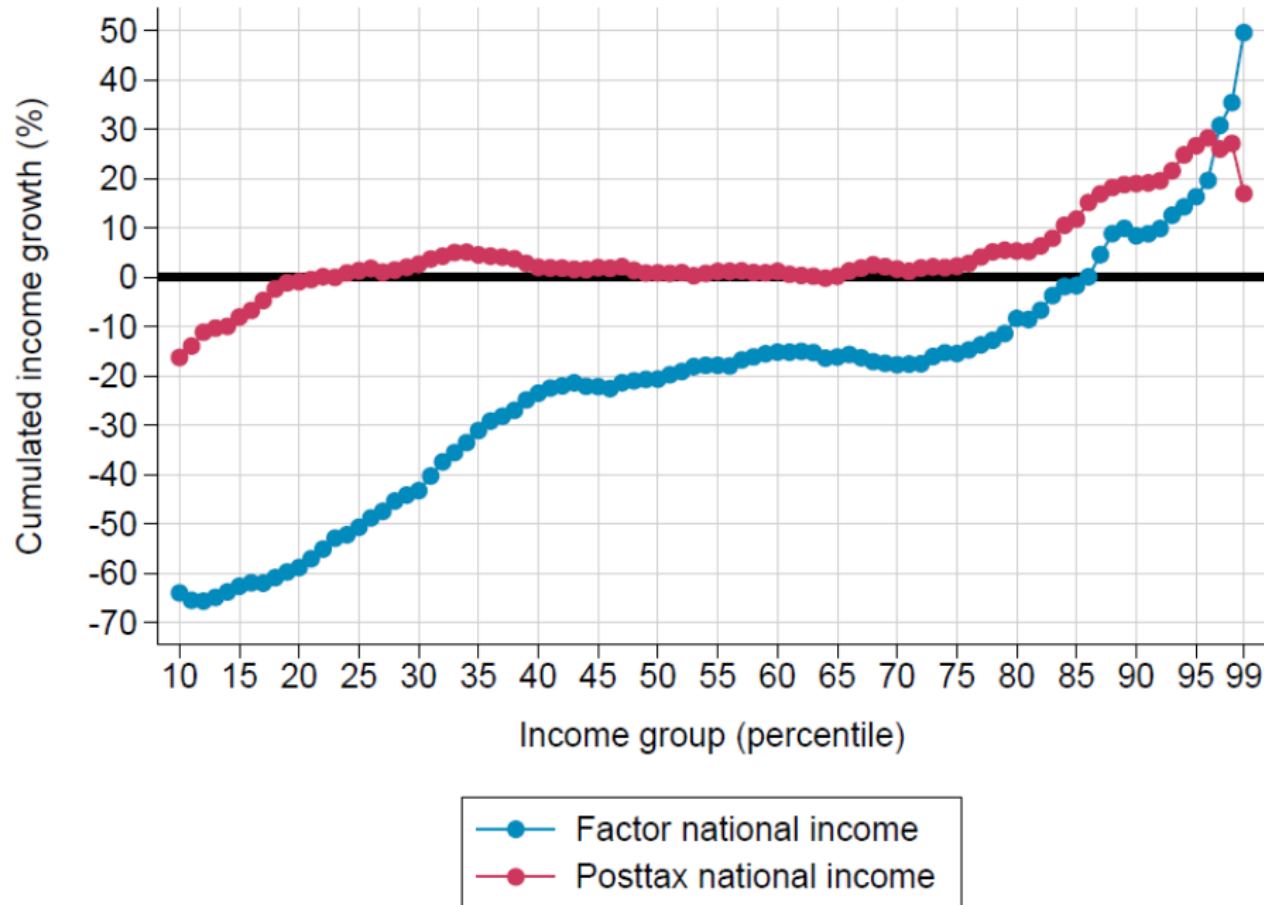


Figure 11 – Redistribution, inequality, and growth

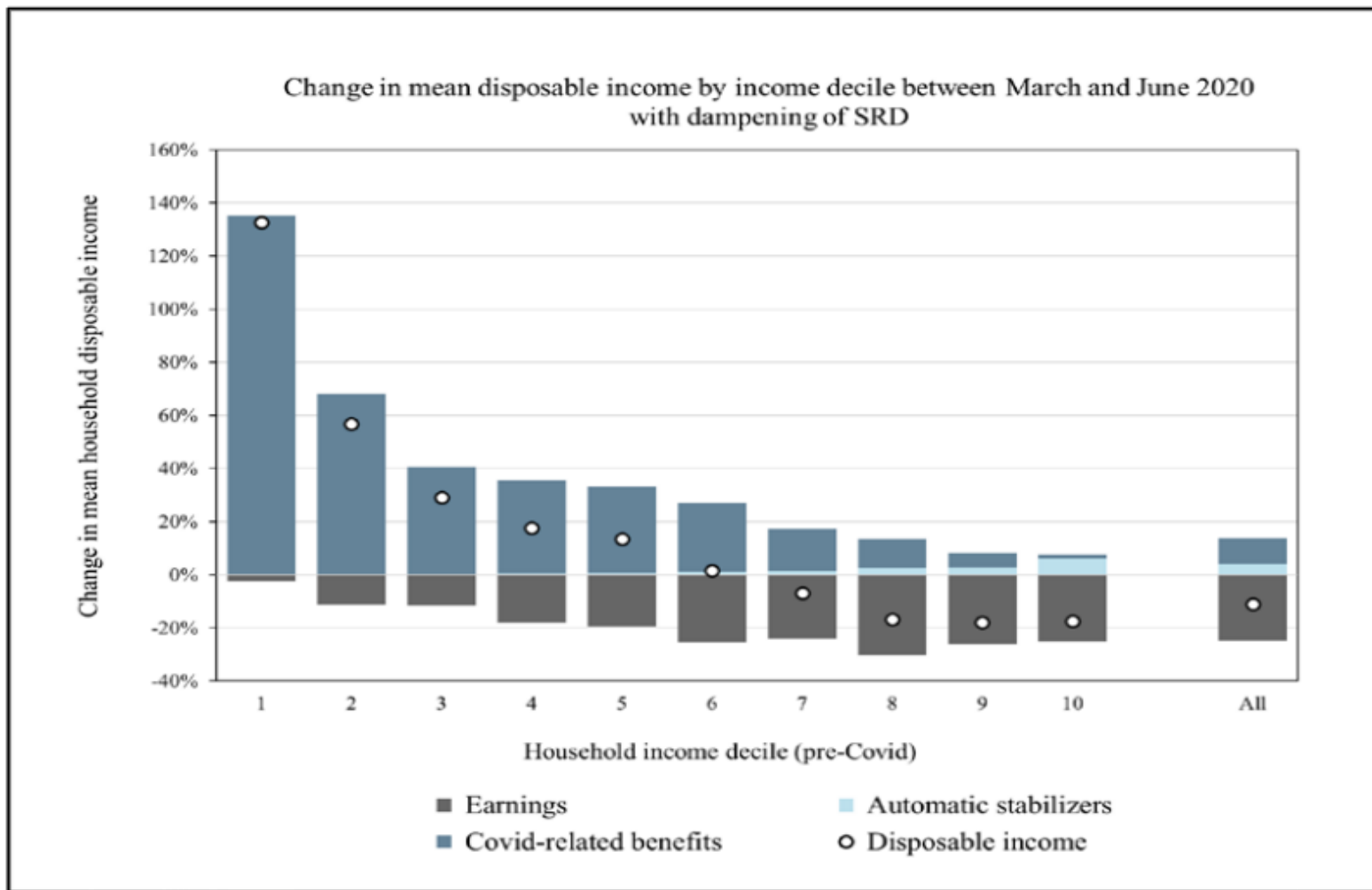
(A) Cumulated income growth by percentile, 1993-2019

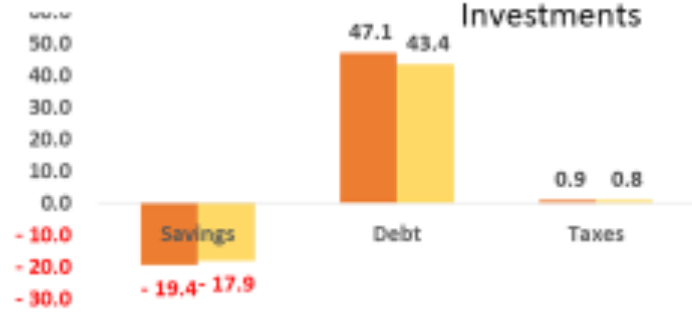
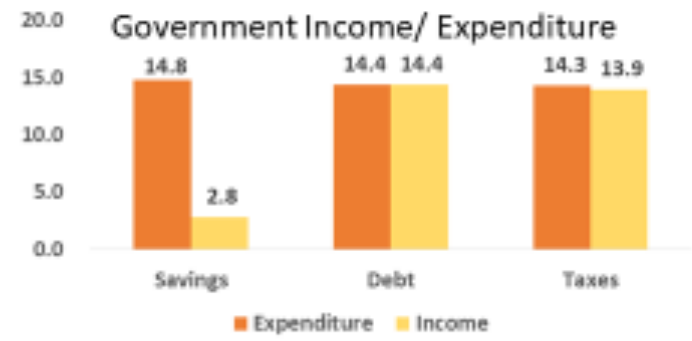
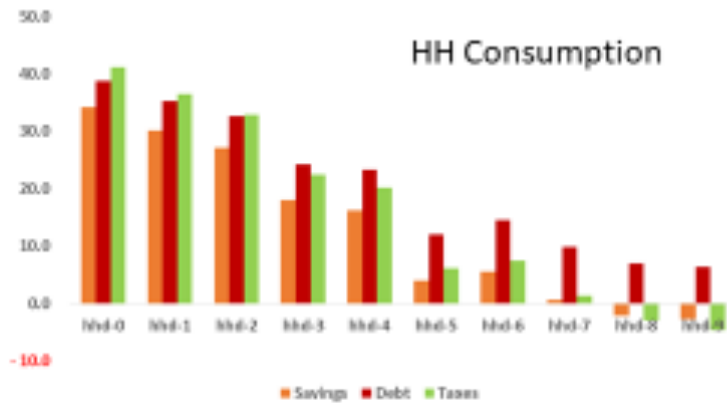
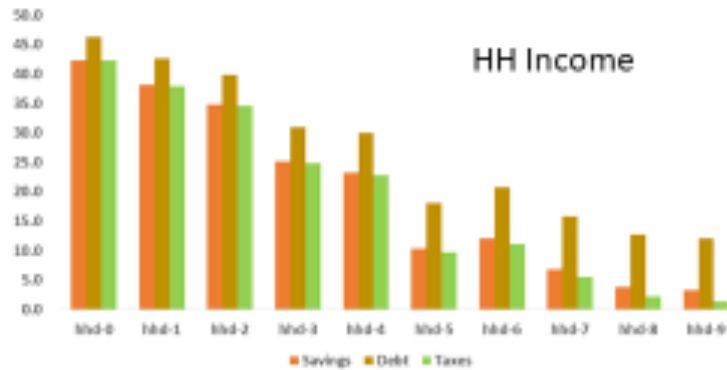


Aroop Chatterjee
 Léo Czajka
 Amory Gethin

September 2021

Colmatar a lacuna do grupo etário dos 18-60 anos





Principais ingredientes da história de Proteção Social da África do Sul

- Constituição / PND
- Instrumentos fiscais
- Dados
- Vontade política
- Sociedade civil ativa

Building a Caring Society Together.



social development

Department:
Social Development
REPUBLIC OF SOUTH AFRICA



NDA
National
Development
Agency

Obrigado!



Building a Caring Society Together.

www.dsd.gov.za



social development

Department:
Social Development
REPUBLIC OF SOUTH AFRICA

