

Lancement de la Stratégie régionale pour l'extension de la protection sociale

Financer la protection sociale pour s'approcher de l'Agenda 2030

Département du Développement social
17 novembre 2021



Building a Caring Society. Together.

www.dsd.gov.za

Aperçu de l'Afrique du Sud

- UMIC – PIB R 8.000/par habitant
- 58 millions de personnes
- Pauvreté :
 - 20,6% - 32,1%@FPL
 - 32,6 – 45,2%%@LBPL
 - 48,2% - 59,3% @ UBPL
- Chômage :
 - 34,4% définition restrictive (7,8 millions)
 - 44,4% définition élargie
- Inégalité : Gini 0,65
- Salaire social
 - santé, éducation, aide sociale, logement et services de base
 - ~ 60% du budget
 - ~ 13,5% du PIB
- Aide sociale
 - ~16% du budget
 - ~3,5% du PIB



Figure 2: Mean monthly household disposable income, by per capita household disposable income decile

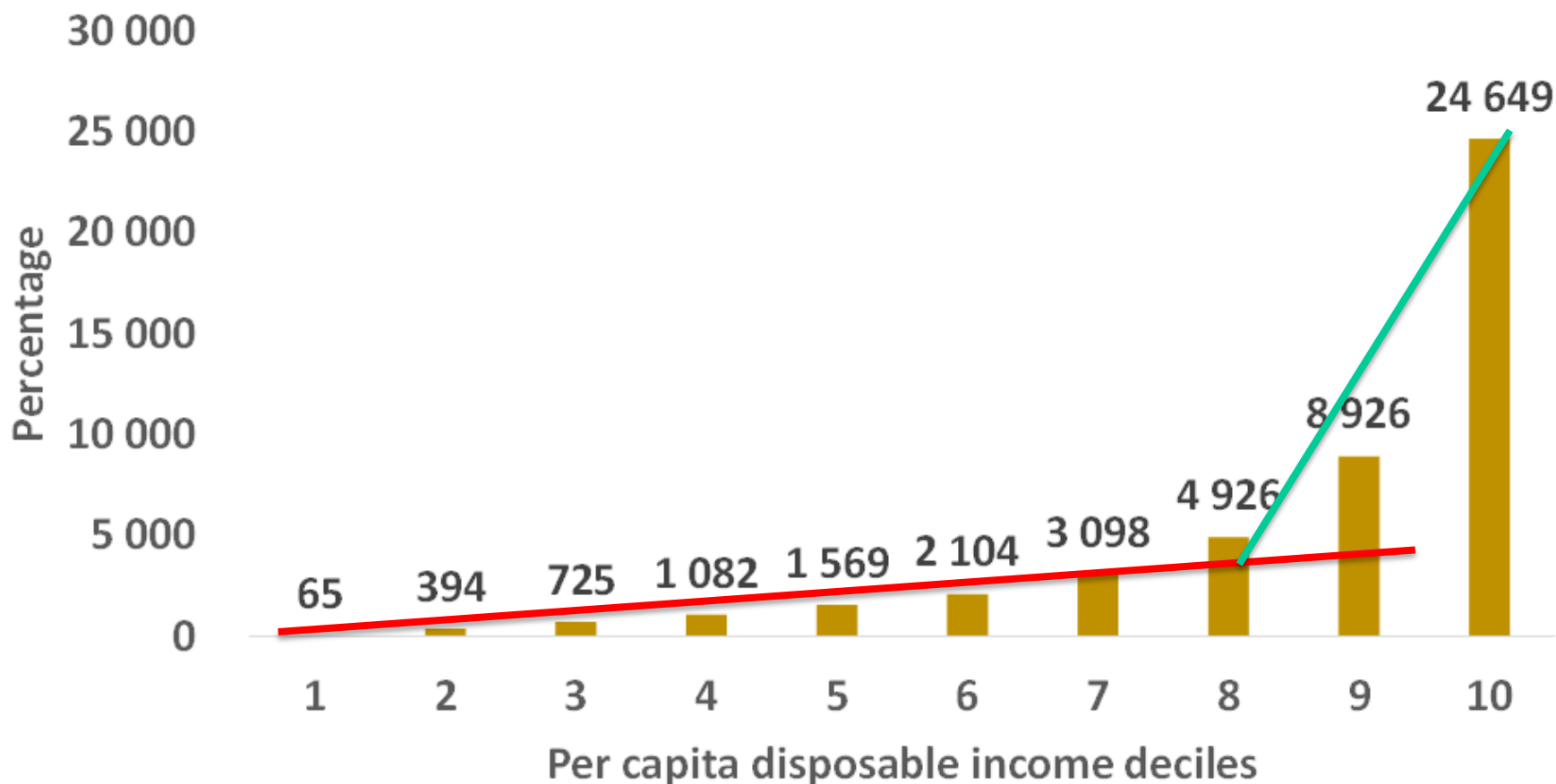
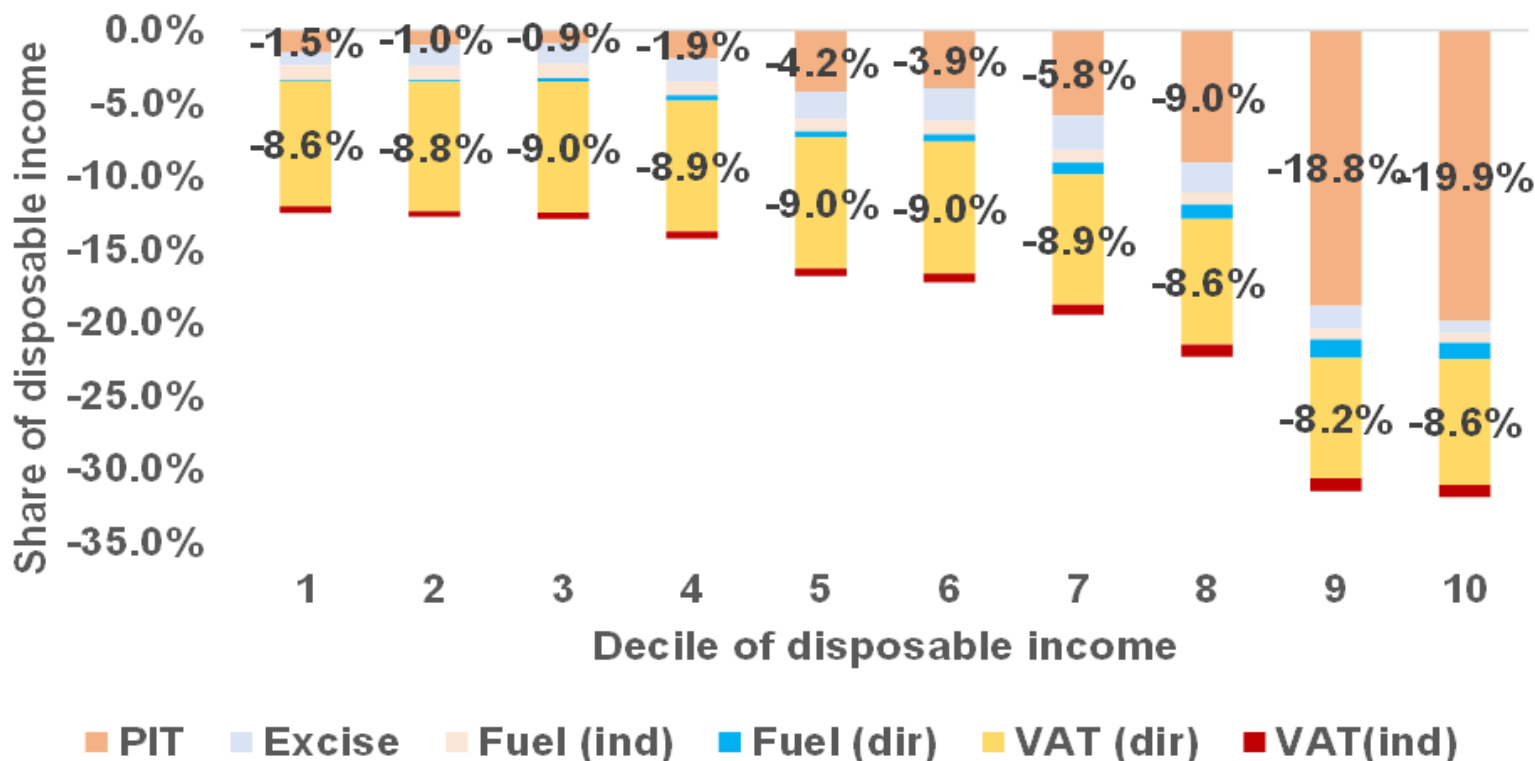


Figure 6: The incidence of direct and indirect taxes across the income distribution



Source: Calculations by Maya Goldman using the 2014 Living Conditions Survey (see Goldman, Woolard, & Jellema, 2020).

Figure 7: Share of total tax revenue paid for different taxes, by per capita household disposable income decile

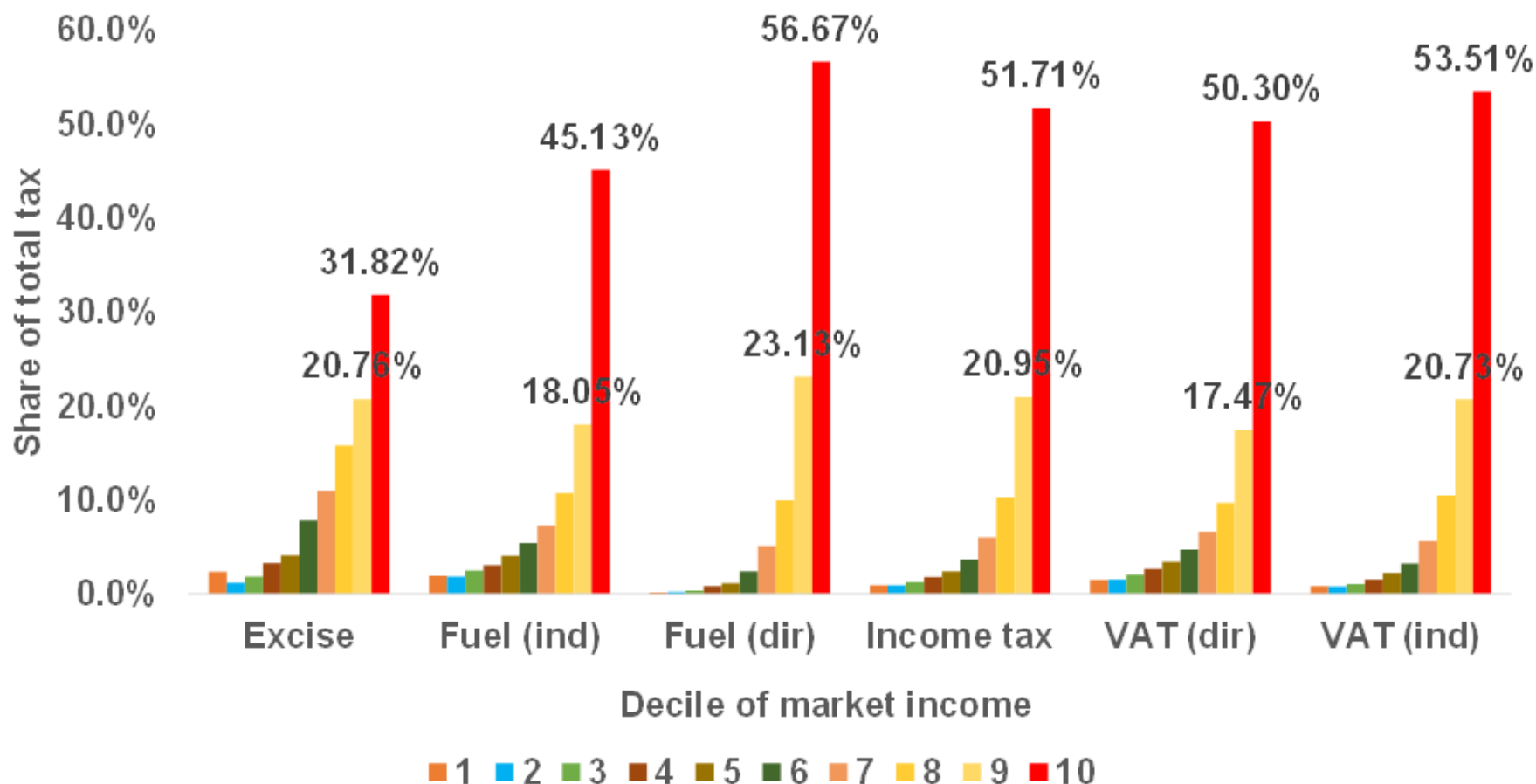


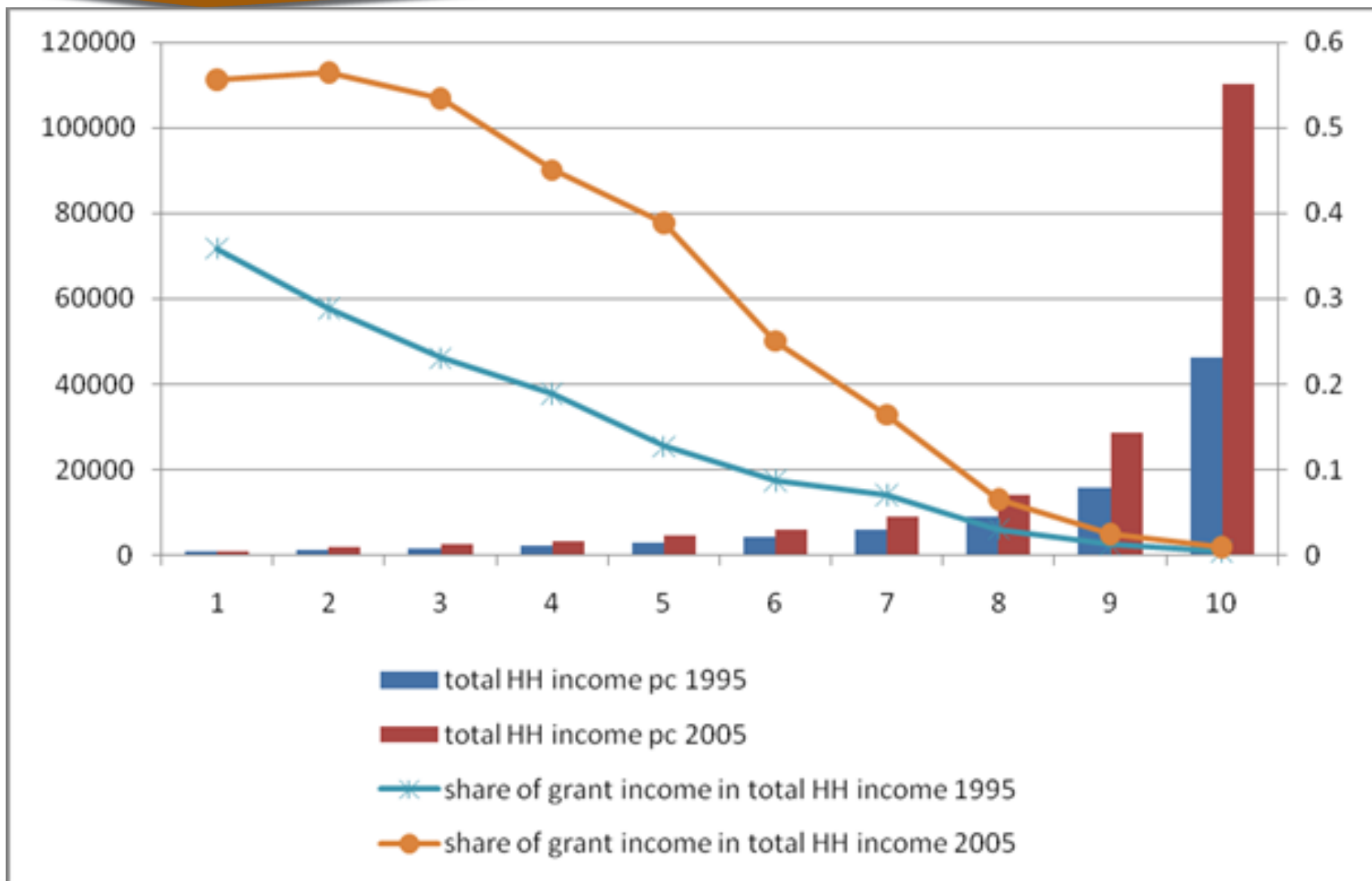
Table 9: Number of social grants beneficiaries by grant type, 2021

Social grant	Beneficiaries	% of total	R/month
Child Support Grant (CSG)	12,992,589	70.5%	460
Older Person's Grant (OPG)	3,722,675	20.2%	1,890
Disability Grant (DG)	997,752	5.4%	1,890
Foster Care Grant (FCG)	309,453	1.7%	1,050
Grant in Aid (GIA)	267,912	1.5%	460
Care Dependency Grant (CDG)	150,151	0.8%	1,890
War Veteran Grant (WVG)	40	0.0%	1,910
Total	18,440,572	100.0%	

Sources: SASSA 2021, **Table 2** (Beneficiaries, as of end March 2021); Mboweni 2021 (Rands per month, from April 2021)

- 185 milliards de rands par an
 - Aides sociales pour la situation de détresse causée par le COVID-19
- 350 rands : 9,5 millions de personnes

www.dsd.gov.za



Building a Caring Society Together.

www.dsd.gov.za



social development

Department:
Social Development
REPUBLIC OF SOUTH AFRICA



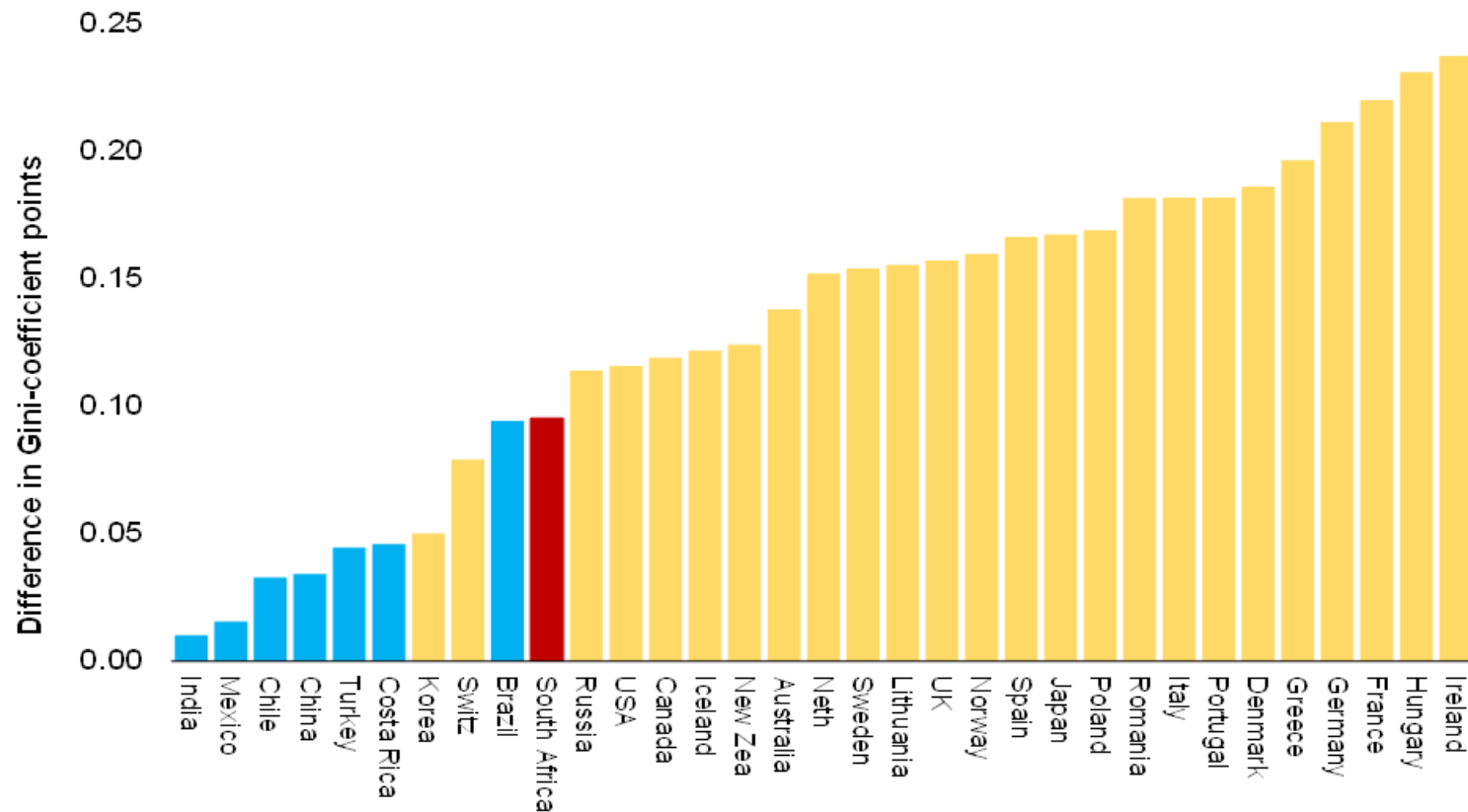
Bhorat et Van der
Westhuizen, 2011



sassa
SOUTH AFRICAN SOCIAL SECURITY AGENCY

Il est possible de croître, se développer et devenir « efficaces » tout en entreprenant une redistribution fiscale importante.

Figure 10: Fiscal effort (percentage point change in the Gini coefficient resulting from taxes and transfers)



Building a



social development

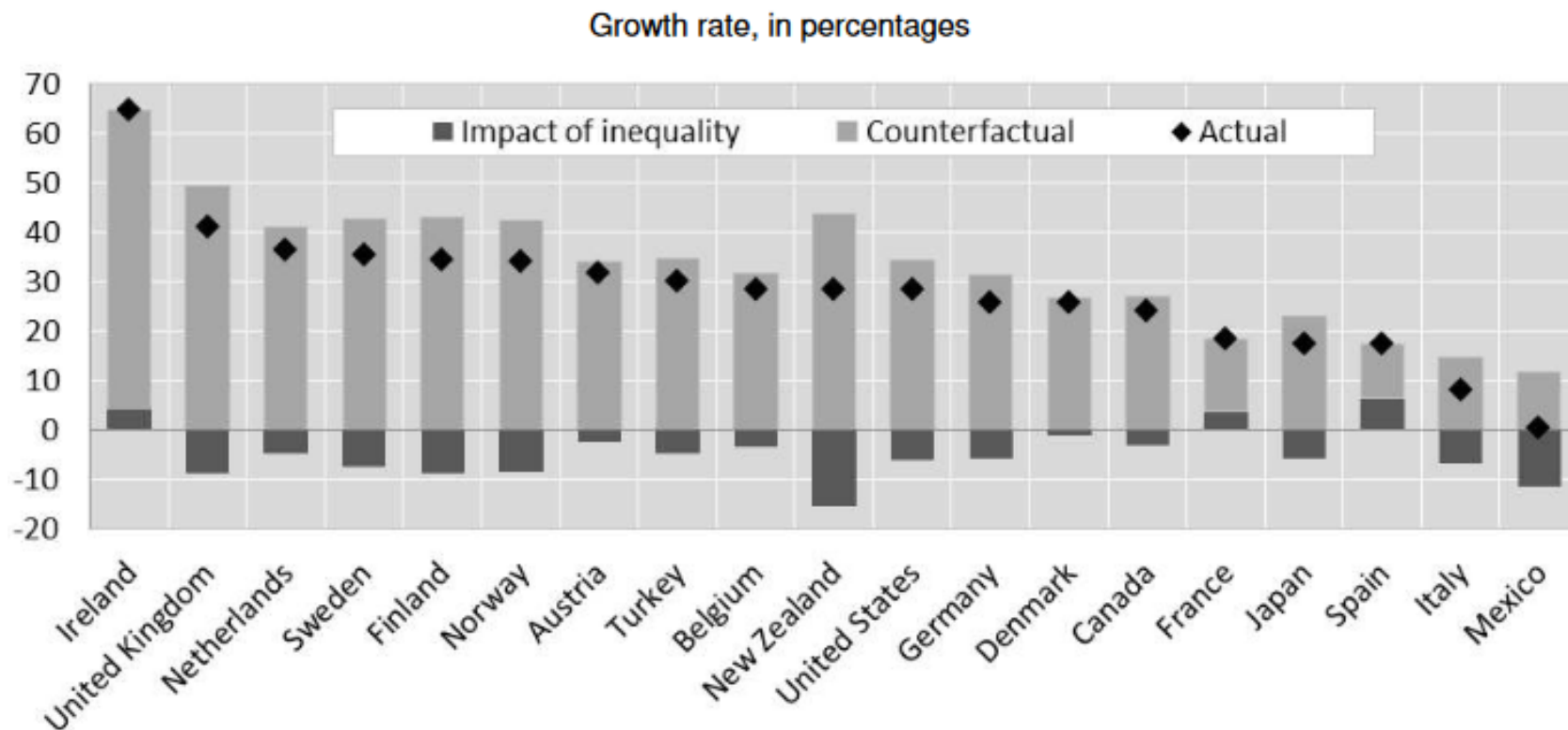
Department:
Social Development
REPUBLIC OF SOUTH AFRICA



www.dsd.gov.za



Figure 3. Estimated consequences of changes in inequality on cumulative per capita GDP growth (1990-2010)



Health and social problems are worse in more unequal countries

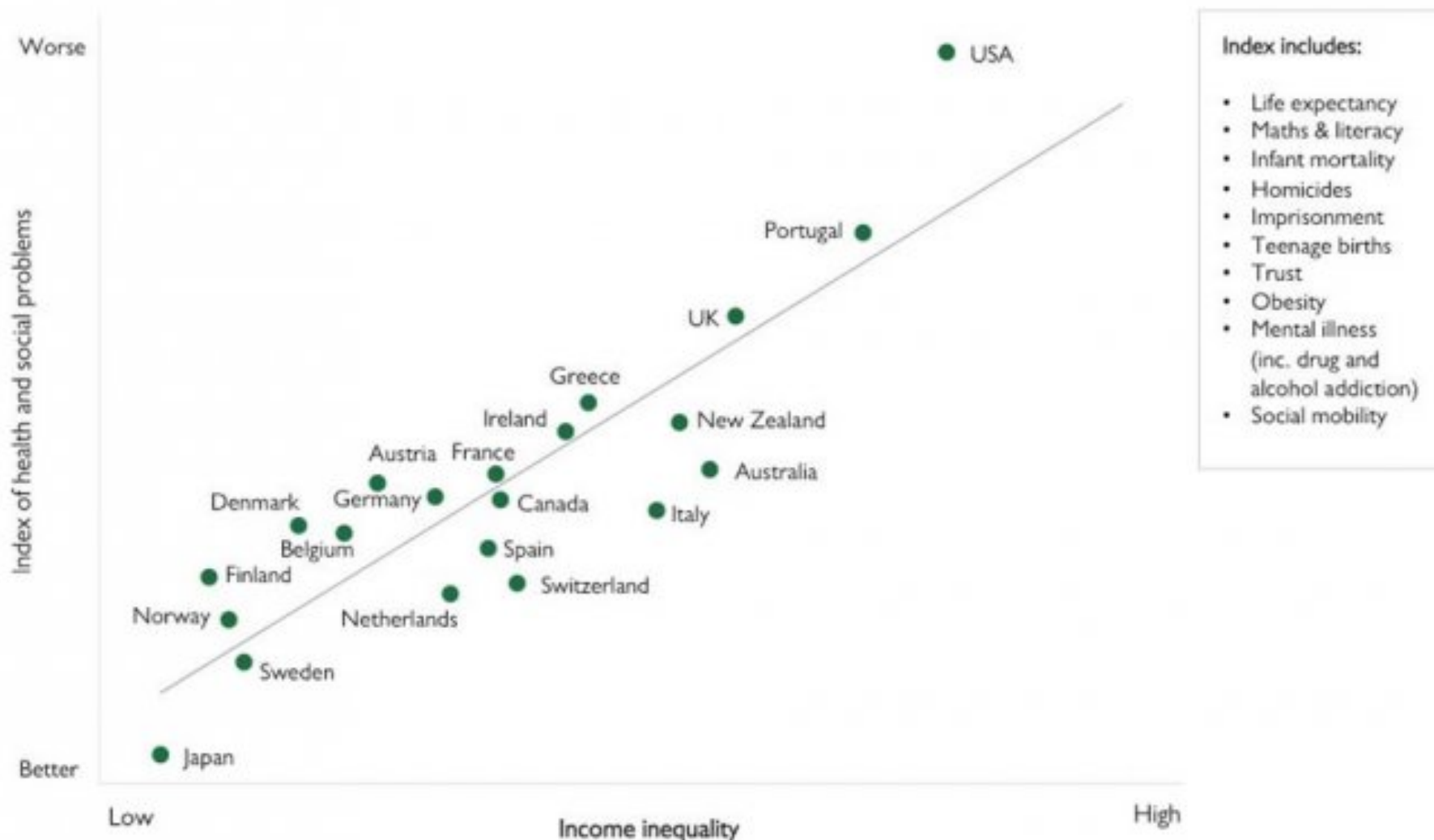
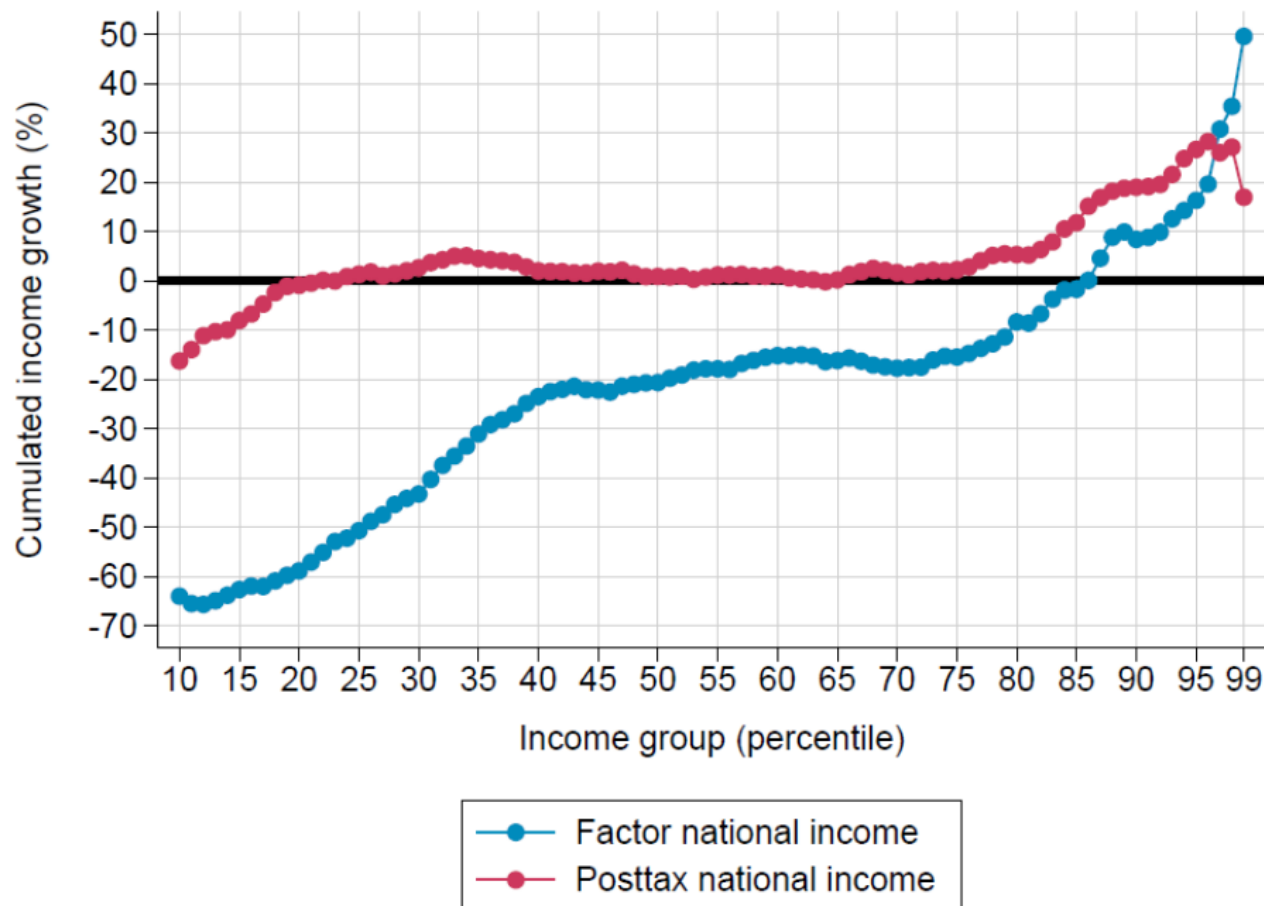


Figure 11 – Redistribution, inequality, and growth

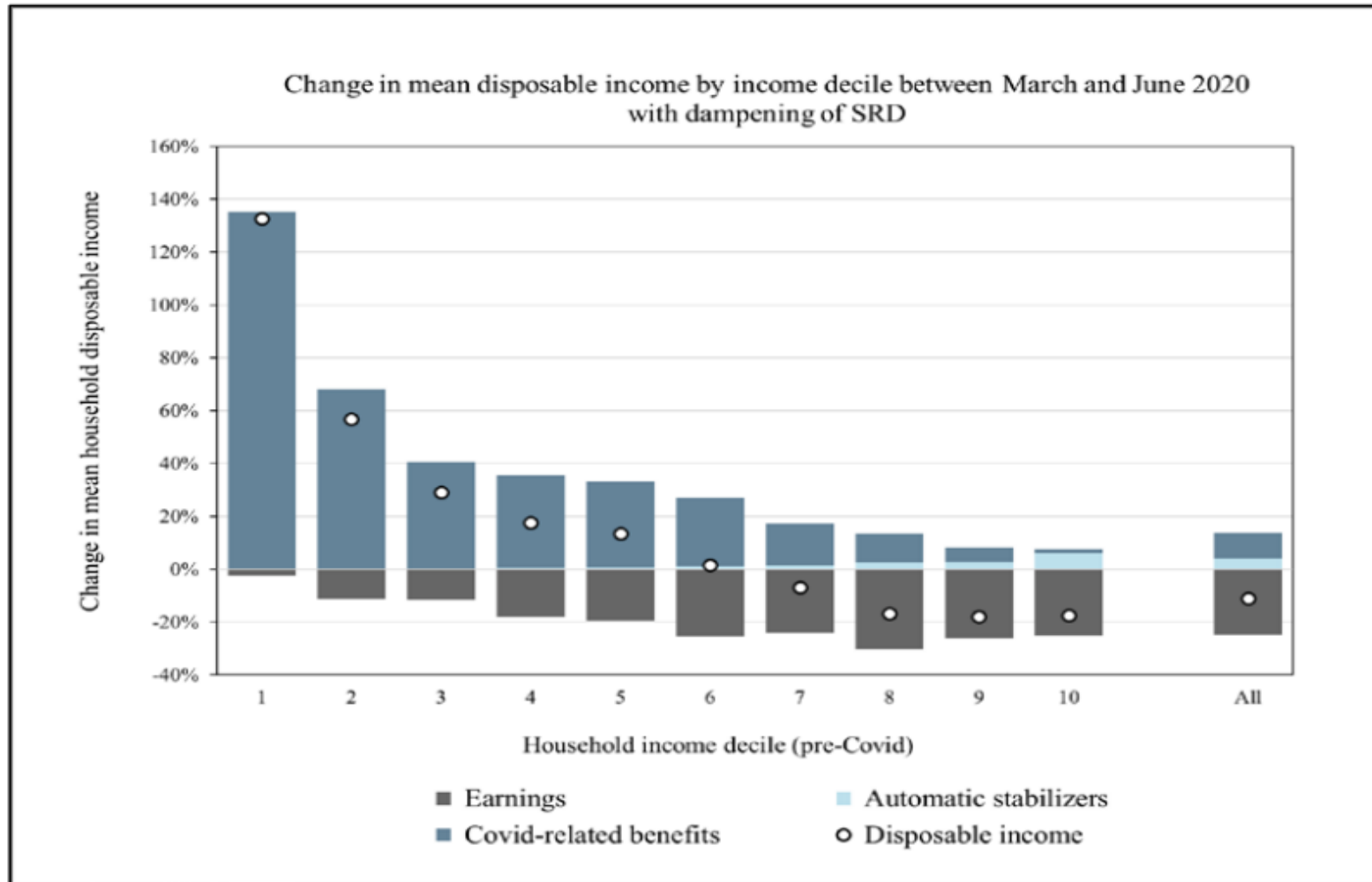
(A) Cumulated income growth by percentile, 1993-2019



Aroop Chatterjee
Léo Czajka
Amory Gethin

September 2021

Réduire l'écart du groupe d'âge 18-60



Building a Caring Society Together.

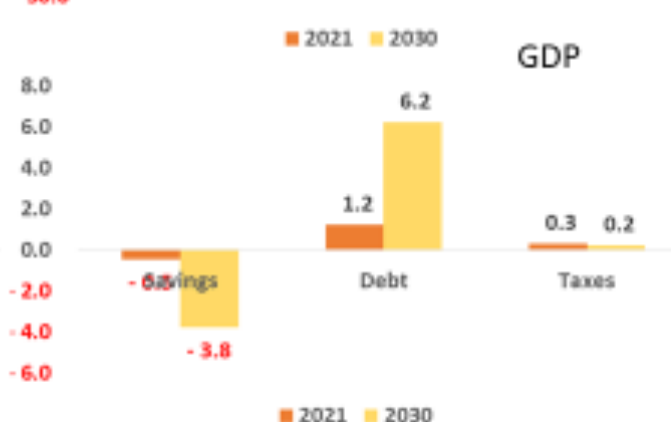
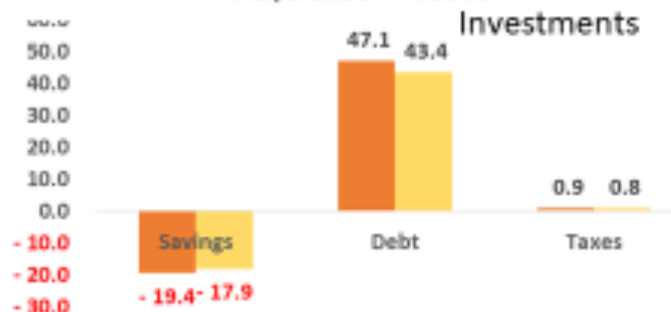
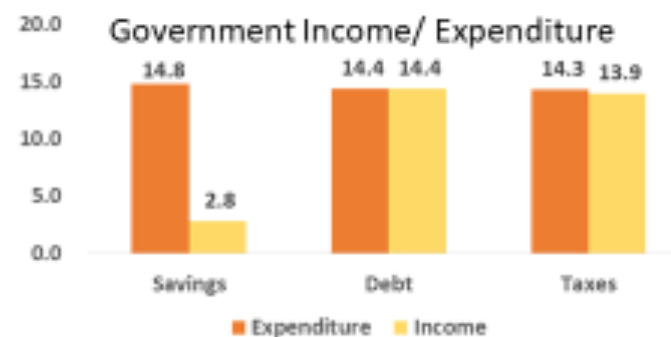
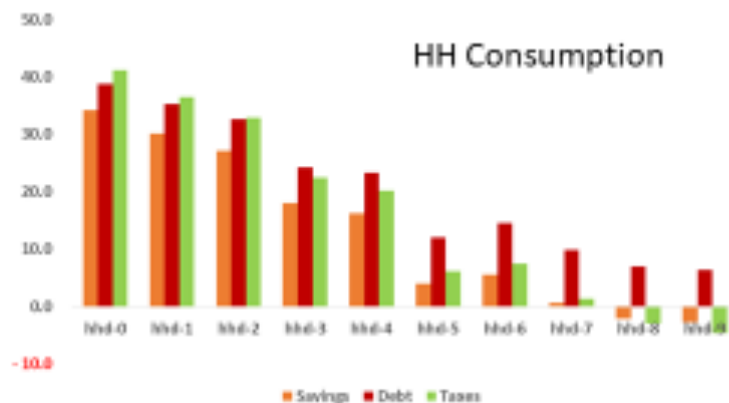
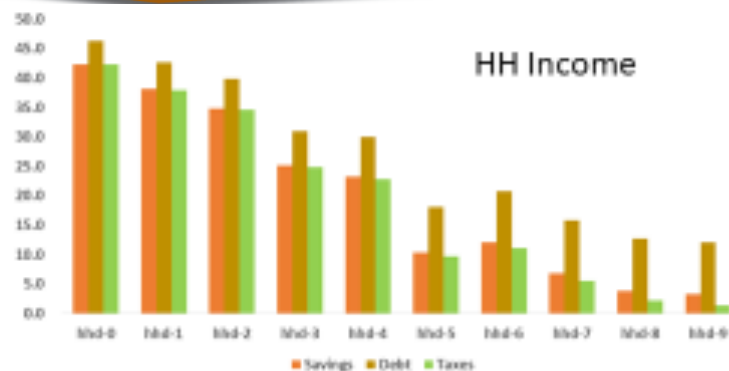
www.dsd.gov.za



social development

Department:
Social Development
REPUBLIC OF SOUTH AFRICA





Building a Caring Society Together.

www.dsd.gov.za



social development

Department:
Social Development
REPUBLIC OF SOUTH AFRICA



Les principaux ingrédients de l’histoire de la protection sociale en Afrique du Sud

- Constitution / Plan national de développement
- Instruments budgétaires
- Données
- Volonté politique
- Société civile active

Building a Caring Society. Together.



social development

Department:
Social Development
REPUBLIC OF SOUTH AFRICA



Merci !

Building a Caring Society. Together.

www.dsd.gov.za



social development

Department:
Social Development
REPUBLIC OF SOUTH AFRICA

