

PROJECT MANAGEMENT

PROJECT CYCLE MANAGEMENT IN FRAGILE SETTINGS

9 – 13 DECEMBER 2019
TURIN, ITALY

PROJECT CYCLE MANAGEMENT IN FRAGILE SETTINGS

TOOLS, TECHNIQUES, AND METHODOLOGIES

OVERVIEW: SNAPSHOT OF THE COURSE

Building peace and meeting development goals in fragile and conflict-affected countries requires special attention from project cycle management experts. Project cycle management techniques ensure that programmes and projects are relevant, feasible, and effective. This course helps managers design better analytical and methodological frameworks specifically for fragile settings.

Are you ready to find more sustainable solutions for fragile states? Join this course today.



PLACE

TURIN, ITALY



DATES

9 – 13 DECEMBER 2019



COLLABORATIVE LEARNING

ONLINE RESOURCES



LANGUAGES

ENGLISH



APPLICATION DEADLINE

25 OCTOBER 2019

WHAT

WHAT TOPICS DOES THIS COURSE COVER?

This week-long course includes preliminary exercises and reading materials, followed by practical training on campus.

- Main **characteristics** of development interventions in fragile settings
- Emerging practices and **lessons learned** in each stage of PCM in fragile states
- PCM **tools, techniques, and methodologies** that work in conflict-affected situations

WHAT WILL I LEARN?

Participants learn about the factors that positively influence projects in fragile settings.

- How to successfully **design, implement, and evaluate** projects in conflict-affected states
- All about the latest and best strategies to engage **stakeholders** in projects
- How to ensure **sustainability** and long-term results

WHAT WILL I BE ABLE TO DO?

The goal of the course is to enable participants to design new or better projects in fragile settings.

- Analyze situations with **tools that can be used** in conflict-affected situations
- Take an **agile approach** to adaptive project management
- Empower women and include **vulnerable groups** such as children, migrants, and people with disabilities

WHY

WHY SHOULD I JOIN?

The Turin Centre is known for its unconventional and effective learning methodologies.

- This course is **highly participatory** and facilitates discussions between experts and participants.
- Different learning methodologies, interactive presentations, and group exercises allow for **knowledge-sharing** and reflection.
- Participants start learning two weeks before the course starts, with **self-guided modules** on PCM and employment and decent work in fragile settings.

WHO

WHO TAKES THIS COURSE?

- Project managers
- Staff responsible for planning, management, and monitoring
- Monitoring and evaluation officers
- Communication officers
- Gender and youth specialists
- Risk management specialists

HOW TO APPLY

Go to <https://bit.ly/2XVlgd3> apply before **25 October 2019**.

PRICE

Tuition: €1,615

Subsistence: €635

Total: €2,250

LEARN DIFFERENTLY

The Centre's training methods include case studies and roleplay exercises

HIGH-LEVEL RESOURCES

Learn from ITCILO trainers and ILO specialists immersed in this fragile and conflict-affected settings

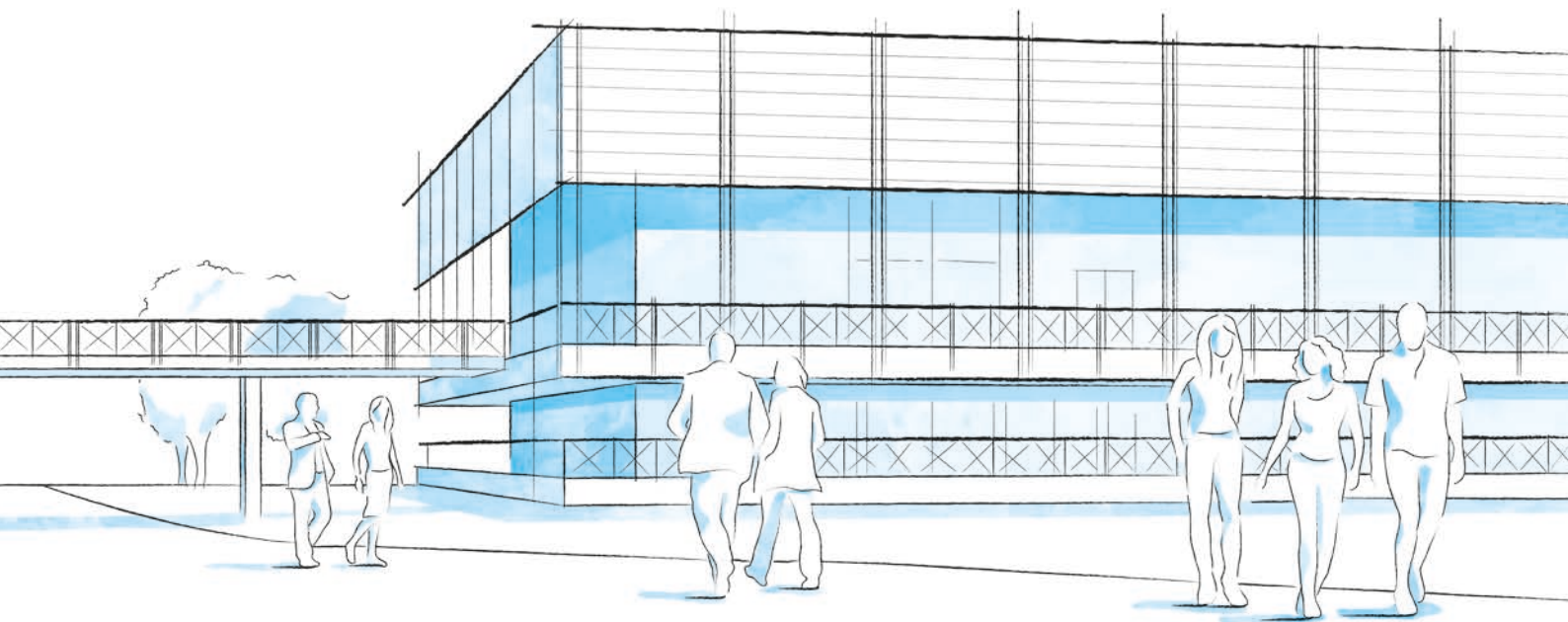
PROVEN PROCEDURES

This course is designed based on internationally recognized strategies and standards



SCAN THE QR CODE
OR VISIT

<https://bit.ly/2IWosyV>



CAMPUS LIFE

A THRIVING UNITED NATIONS CAMPUS AND COMMUNITY OF PROFESSIONAL PEOPLE FROM AROUND THE WORLD

- **Three organizations** from the United Nations system on campus
- **More than 300 training courses** and activities in a stimulating international environment
- **Thousands of participants** from all over the world

ENVIRONMENT AND SURROUNDINGS

Grab a campus bicycle and explore the Turin Centre.

Located in a leafy park on the banks of the Po River, it's a great place for study and collaboration. Experience innovative learning and training methods in modern classrooms equipped with simultaneous translation services.

HOUSING, DINING, AND MORE

Comprising more than 280 private dormitories, the **Turin Campus provides a broad range of services for course participants and partners** including a free-flow restaurant, bank, travel agency, laundromat, post office, gym, medical services and a reception desk open 24/7.

COMMUNITY ENGAGEMENT AND DIVERSITY

Participants can enjoy social events organized by the Turin Centre as well as by their course facilitators.

Whether on or off campus, people from different cultural backgrounds have the opportunity to listen to live music together, cook and share traditional foods, or team up to play games and network.

INFO

FOR FURTHER INFORMATION PLEASE CONTACT

International Training Centre of the ILO

Jobs for Peace and Resilience Programme
Viale Maestri del Lavoro, 10
10127 Turin – Italy

jpr@itcilo.org
www.itcilo.org

COURSE CODE: A9011985

Made of paper awarded the European Union Eco-label,
reg.nr FR/011/002, supplied by International Paper. 