



COLLECTIVE BARGAINING

EFFECTIVE WAGE POLICIES

9 – 13 DECEMBER 2019
TURIN, ITALY

EFFECTIVE WAGE POLICIES

FROM DESIGN TO IMPLEMENTATION

OVERVIEW

SNAPSHOT OF THE COURSE

Wage policies can alleviate working poverty and inequality, and contribute to the UN's Sustainable Development Goals. The problem is visible globally: around the world millions of workers are paid wages that are insufficient to adequately cover the needs of their families, and globally women are paid about 20 percent less than men. In this course, participants learn how to design and implement sustainable wage policies that ensure a just share of the fruits of progress to all, and protection against unduly low wages. Join this course if you're motivated to improve wage policies for the future of work.



PLACE

TURIN, ITALY



DATES

9 – 13 DECEMBER 2019



COLLABORATIVE LEARNING

ONLINE RESOURCES



LANGUAGES

ENGLISH



APPLICATION DEADLINE

4 NOVEMBER 2019

WHAT

WHAT TOPICS DOES THIS COURSE COVER?

This course provides practical guidance for creating effective wage policies.

- Minimum wages
- Collective bargaining
- Gender equality
- Tripartite mechanisms

WHAT WILL I LEARN?

- Course materials are informed by the ILO Minimum Wage Policy Guide and the Global Wage Report 2018-19, as well as the collective bargaining policy guide.
- All about evidence-based wage policies, including the fixing of minimum wages
- How collective bargaining can reduce wage inequality and wage gaps
- The latest global insights on wage policies, and how to leverage them

WHAT WILL I BE ABLE TO DO?

- Participants connect to a global network of professionals involved in the formulation, implementation, and analysis of wage policies.
- Strengthen existing wage policies and come up with more effective new ones
- Implement provisions that address the gender gap in wage distribution
- Use a participatory approach to formulate better wage policies for more people

WHY

WHY SHOULD I JOIN ?

The Turin Centre is known for its innovative learning methods and dynamic training environments.

- This course takes a **hands-on approach**, highlights best practices, and introduces new tools and methodologies.
- Participants are encouraged to **share individual experiences** and work in teams to enhance their learning.
- This course gets to the core of **current debates and research** on wage policies.

WHO

WHO TAKES THIS COURSE?

- Representatives from ministries of labour and employment, and other interested ministries such as finance or economics
- Members of national minimum wage commissions
- Staff of employers' and workers' organizations
- National statistical offices and research institutions supporting wage policy formulation
- Other relevant stakeholders involved in wage policy creation

HOW TO APPLY

Go to <https://bit.ly/2BJUPho> to find the course and apply before **4 November 2019**.

PRICE

Tuition: €1,615

Subsistence: €635

Total: €2,250

LEARN DIFFERENTLY

The Centre's training methods include interactive and participatory exercises

HIGH-LEVEL RESOURCES

Learn from wage policy specialists from the ILO and ITCILO

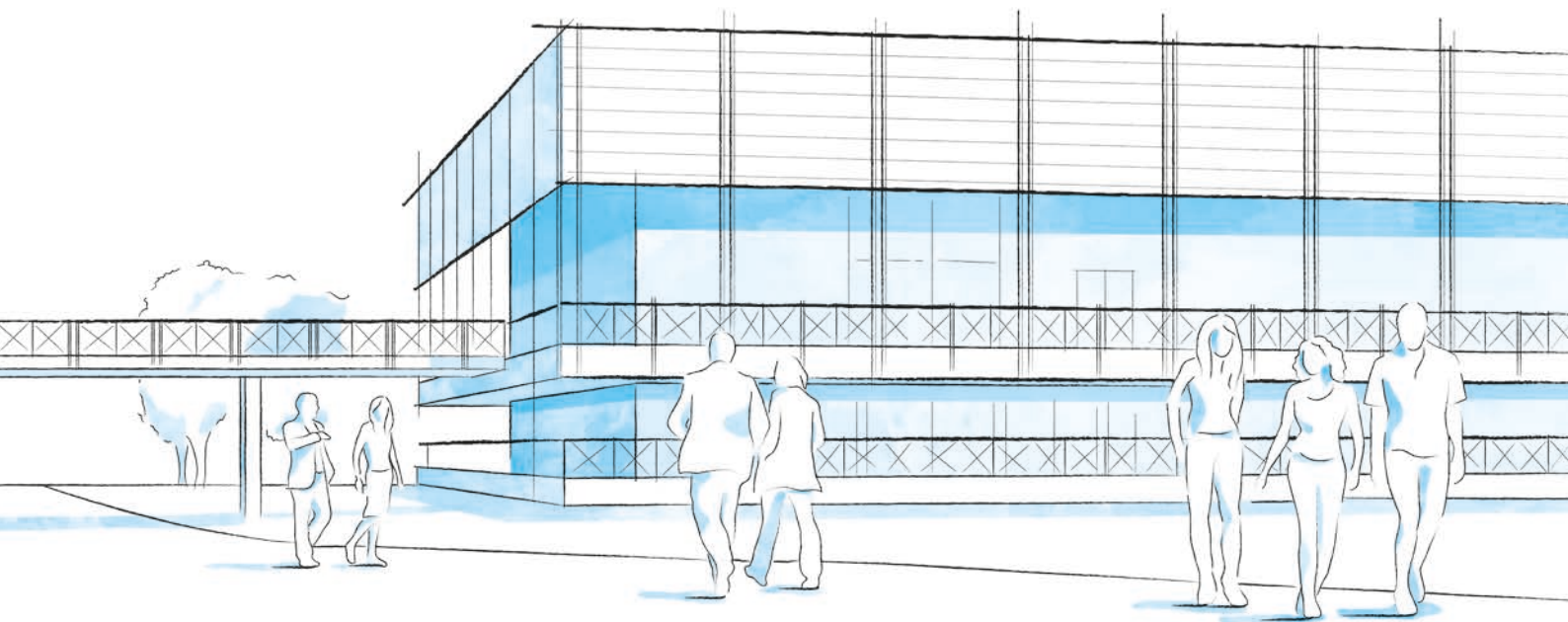
PROVEN PROCEDURES:

This course is based on ILO-recognized strategies and standards



SCAN THE QR CODE
OR VISIT

bit.ly/2GVT11C



CAMPUS LIFE

A THRIVING UNITED NATIONS CAMPUS AND COMMUNITY OF PROFESSIONAL PEOPLE FROM AROUND THE WORLD

- **Three organizations** from the United Nations system on campus
- **More than 300 training courses** and activities in a stimulating international environment
- **Thousands of participants** from all over the world

ENVIRONMENT AND SURROUNDINGS

Grab a campus bicycle and explore the Turin Centre.

Located in a leafy park on the banks of the Po River, it's a great place for study and collaboration. Experience innovative learning and training methods in modern classrooms equipped with simultaneous translation services.

HOUSING, DINING, AND MORE

Comprising more than 280 private dormitories, the **Turin Campus provides a broad range of services for course participants and partners** including a free-flow restaurant, bank, travel agency, laundromat, post office, gym, medical services and a reception desk open 24/7.

COMMUNITY ENGAGEMENT AND DIVERSITY

Participants can enjoy social events organized by the Turin Centre as well as by their course facilitators.

Whether on or off campus, people from different cultural backgrounds have the opportunity to listen to live music together, cook and share traditional foods, or team up to play games and network.

INFO

FOR FURTHER INFORMATION PLEASE CONTACT

International Training Centre of the ILO

Employment Policy and Analysis Programme (EPAP)
Viale Maestri del Lavoro, 10
10127 Turin – Italy

skillsdevelopment@itcilo.org
www.itcilo.org

COURSE CODE: A9012119

Made of paper awarded the European Union Eco-label, reg.nr FR/011/002, supplied by International Paper. 