



FRAGILE STATES

# PROJECT CYCLE MANAGEMENT IN FRAGILE SETTINGS

ONLINE PHASE: 23 NOVEMBER – 6 DECEMBER 2020,  
RESIDENTIAL PHASE: 7 – 11 DECEMBER 2020, TURIN, ITALY

# PROJECT CYCLE MANAGEMENT IN FRAGILE SETTINGS

TOOLS, TECHNIQUES, AND METHODOLOGIES

## OVERVIEW

### SNAPSHOT OF THE COURSE

Building peace and meeting development goals in fragile and conflict-affected countries requires special skills of project managers. Basing interventions on sound Conflict analysis in order to ensure we Do No Harm is fundamental. Project cycle management techniques ensure that programmes and projects are relevant, feasible, and effective. This course helps you design better results frameworks, shows how to manage risks in fragile settings, set up monitoring and enact exit strategies, based on a clear understanding of the drivers of fragility. The blended format contains a mandatory on-line foundational module followed by a week-long face-to-face taught course. The course uses live case studies of the participants themselves and of the ILO. You will learn in a group of fellow project managers who are eager to share their experience. Are you keen to find and share more sustainable solutions for fragile states? Then this course is for you.



ONLINE

**ITC ILO E-CAMPUS**  
23 NOVEMBER –  
6 DECEMBER 2020



PLACE

**TURIN, ITALY**  
7 – 11 DECEMBER 2020



LANGUAGES

**ENGLISH**



APPLICATION DEADLINE

**26 OCTOBER 2020**

## WHAT

### HOW WILL I LEARN - THE COURSE FORMAT

This course starts with a preliminary interactive on-line foundational module on Project Cycle Management. The on-line module will take 6 – 8 hrs of work. It is followed by the taught course with practical training on campus. The face-to-face training will be based on participants' own projects. Sharing those is on an entirely voluntary basis and not a requirement to join the course.

### WHAT TOPICS DOES THIS COURSE COVER?

The goal of the course is to enable participants to design new or better projects in fragile settings. The format of the face-to-face period enables participants to learn new skills and discuss experience. All exercises are based on real cases of the participants themselves and of the ILO.

- Main characteristics of development programs and projects interventions
- Project Management that contributes to Peace and Statebuilding illustrated by cases from the participants and from the ILO
- Emerging practices and lessons learned in PCM in fragile states
- PCM tools, techniques, and methodologies that work in conflict-affected situations

### WHAT WILL I LEARN?

Participants learn about the factors that positively influence projects in fragile settings.

- How to conduct a fragility and conflict analysis and map stakeholders in fragile settings.
- How to successfully design, implement, and monitor projects in conflict-affected states
- How to ensure sustainability and long-term results

## WHAT WILL I BE ABLE TO DO?

- Carry out a Fragility and Conflict Analysis and a Conflict sensitive Stakeholder Mapping
- Design of project interventions in conflict-affected situations, ensuring women and youth empowerment
- Setting up appropriate monitoring and risk management systems
- Design exit strategies to ensure sustainability of results

## WHY

### WHY SHOULD I JOIN?

The Turin Centre is known for its unconventional and effective learning methodologies. This course starts with a preliminary interactive on-line foundational module on Project Cycle Management. It contains audio-visuals, interactive reading, exercises, and on-line tools, and requires approximately 6 - 8 hrs work. The on-line period is followed by the taught course with practical training on campus. At the end of the course, all material – the on-line course, a communication forum, all material used during the face-to-face period as well as an on-line library will remain at the disposal of participants for an indefinite time.

- This course is highly participatory and facilitates discussions between experts and participants.
- Different learning methodologies, interactive presentations, and group exercises allow for knowledge-sharing and reflection.
- Participants start learning two weeks before the course starts, with self-guided modules on PCM and employment and decent work in fragile settings.

## WHO

### WHO TAKES THIS COURSE?

- Project and program managers,
- Staff responsible for planning, management, and monitoring,
- Monitoring and evaluation officers,
- Communication officers,
- Gender and youth specialists,
- Risk management specialists,

## HOW TO APPLY

Go to <https://bit.ly/2IWInhl> before **26 October 2020**.

## PRICE

Tuition: €1,650, Subsistence: €635, Total: €2,285

## LEARN DIFFERENTLY

The Centre's training methods include case studies and roleplay exercises

## HIGH-LEVEL RESOURCES

Learn from ITCILO trainers and ILO specialists immersed in this fragile and conflict-affected settings

## PROVEN PROCEDURES

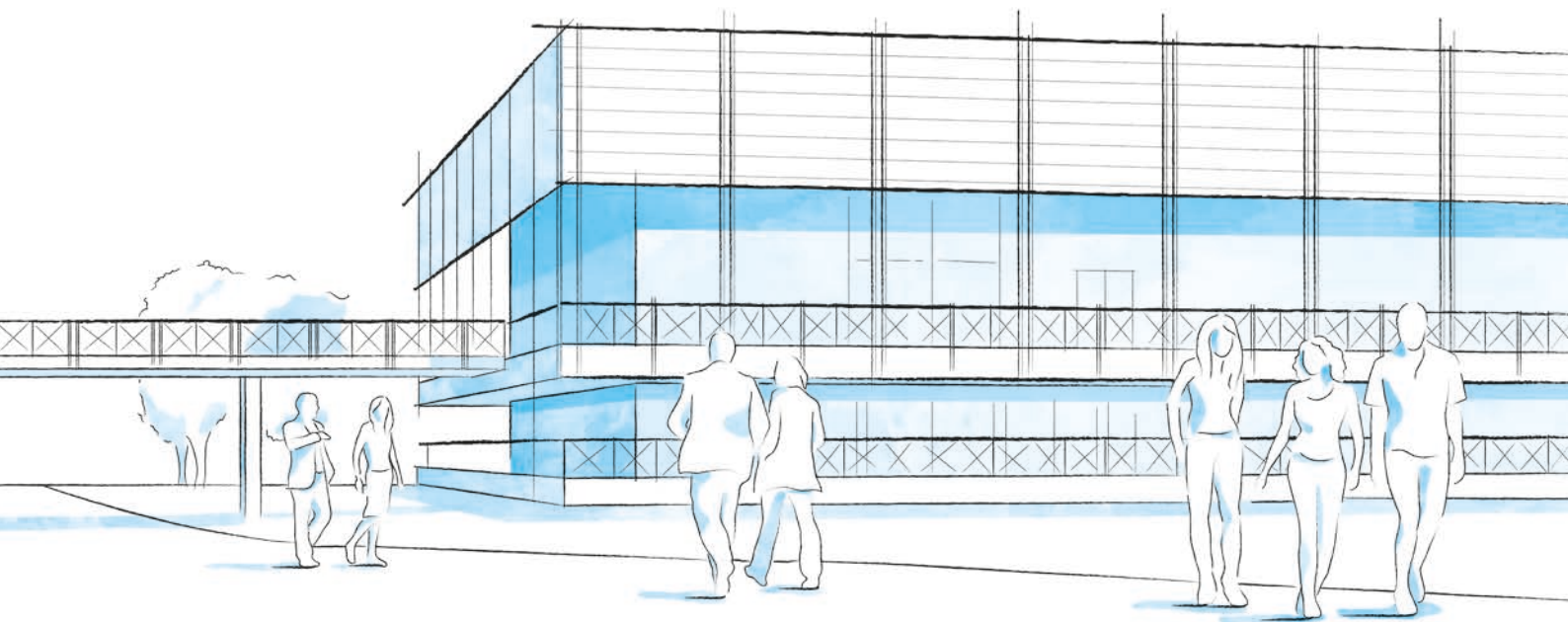
This course is designed based on internationally recognized strategies and standards



SCAN THE QR CODE  
OR VISIT

[bit.ly/2Uk27kj](https://bit.ly/2Uk27kj)





## CAMPUS LIFE

### A THRIVING UNITED NATIONS CAMPUS AND COMMUNITY OF PROFESSIONAL PEOPLE FROM AROUND THE WORLD

- **Three organizations** from the United Nations system on campus
- **More than 300 training courses** and activities in a stimulating international environment
- **Thousands of participants** from all over the world

### ENVIRONMENT AND SURROUNDINGS

#### **Grab a campus bicycle and explore the Turin Centre.**

Located in a leafy park on the banks of the Po River, it's a great place for study and collaboration. Experience innovative learning and training methods in modern classrooms equipped with simultaneous translation services.

### HOUSING, DINING, AND MORE

Comprising more than 280 private dormitories, the **Turin Campus provides a broad range of services for course participants and partners** including a free-flow restaurant, bank, travel agency, laundromat, post office, gym, medical services and a reception desk open 24/7.

### COMMUNITY ENGAGEMENT AND DIVERSITY

**Participants can enjoy social events organized by the Turin Centre** as well as by their course facilitators.

Whether on or off campus, people from different cultural backgrounds have the opportunity to listen to live music together, cook and share traditional foods, or team up to play games and network.

## INFO

### FOR FURTHER INFORMATION PLEASE CONTACT

**International Training Centre of the ILO**  
Jobs for Peace and Resilience Programme  
Viale Maestri del Lavoro, 10  
10127 Turin – Italy

[jpr@itcilo.org](mailto:jpr@itcilo.org)  
[www.itcilo.org](http://www.itcilo.org)

**COURSE CODE: A9012753**

Made of paper awarded the European Union Eco-label,  
reg.nr FR/011/002, supplied by International Paper. 