



SOCIAL PROTECTION

CONTRIBUTION COLLECTION AND COMPLIANCE

8 – 12 JUNE 2020
TURIN, ITALY



CONTRIBUTION COLLECTION AND COMPLIANCE

ISSA GUIDELINES, KNOWLEDGE-SHARING, AND INNOVATION

OVERVIEW

Effective contribution collection and compliance is essential to ensure the financial sustainability, adequate coverage and social legitimacy of social security schemes. This course draws on international best-practice guidelines to assess approaches to improve governance and management of contribution collection and enforcing compliance, with particular focus on institutional business processes and the role of ICT. This is one of seven courses run in partnership with the International Social Security Association (ISSA) held simultaneously at the Turin Centre.

Join a network of social security practitioners in this highly specialized course.



PLACE

TURIN, ITALY



DATES

8 – 12 JUNE 2020



COLLABORATIVE LEARNING

ONLINE RESOURCES



LANGUAGE

ENGLISH



APPLICATION DEADLINE

8 MAY 2020

WHAT

WHAT WILL I LEARN?

This course uses the ISSA Guidelines on Contribution Collection and Compliance as a framework for assessing challenges and identifying innovations.

- **Governance and strategy:** principles, frameworks and organizational structures
- **Compliance risk management:** goals, improving voluntary compliance and extending coverage to difficult contribution groups
- **Operational Processes:** developing an operation process model; roles and responsibilities
- **ICT environment and tools:** introduction to ICT services, importance of E-services for voluntary compliance and benefits of data exchange with other organizations
- **Fraud, evasion and error:** role of ICT to detect fraud, evasion and error; benefits of data exchange; co-operation with external organizations
- **Continuous improvement and fostering system maturity:** importance of a culture of awareness; concepts of a maturity model and continuous improvement plan

WHAT WILL I BE ABLE TO DO?

- **Understand core approaches** to improving contribution collection and compliance based on international best practice
- **Identify roles and responsibilities** of social security professionals in the governance and management of collecting contributions and enforcing compliance
- **Utilise the ISSA Guidelines** as a framework for improved efficiency and effectiveness of contributions collection and compliance
- **Develop country-tailored innovations** drawing on experience from other countries

WHY

WHY SHOULD I JOIN?

This course is designed specifically for social security professionals from ISSA member organizations.

- **ISSA-accredited experts** with decades of international experience in social security administration
- Join and interact with a **network of professionals** from other ISSA member organisations, including those attending parallel courses
- **Mix of training methods:** lectures, plenary discussions, good practices, case studies, group work and individual exercises
- Successful candidates receive an **ITCILO Certificate of Achievement**

WHO

WHO TAKES THIS COURSE?

The course is designed for social security professionals of ISSA member organizations. Participants should hold positions directly related to the area of contribution collection and compliance.

HOW

The course consists of 60 total hours of learning, broken up into three phases.

- **Pre-course** (10 hours): Self-guided study through the online eCampus platform. Includes a pre-course assessment
- **Residential week** (45 hours): 5-day interactive sessions at the ITCILO in Turin, including developing an individual presentation
- **Post-course assignment** (5 hours): Individual assignment applying ISSA Guidelines to the participant's organisation

HOW TO APPLY

Find the application form at bit.ly/2OttfvX and apply before **8 May 2020**.

PRICE

Tuition: €1,650
Subsistence: €635
Total: €2,285

CAMPUS LIFE

The green campus with modern training facilities makes a unique space for learning

LEARN DIFFERENTLY

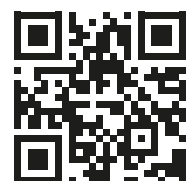
Innovative training methodologies and integrated use of digital learning technology

THREE PHASES

Learning begins at home, continues in the classroom, and ends with an individual assignment

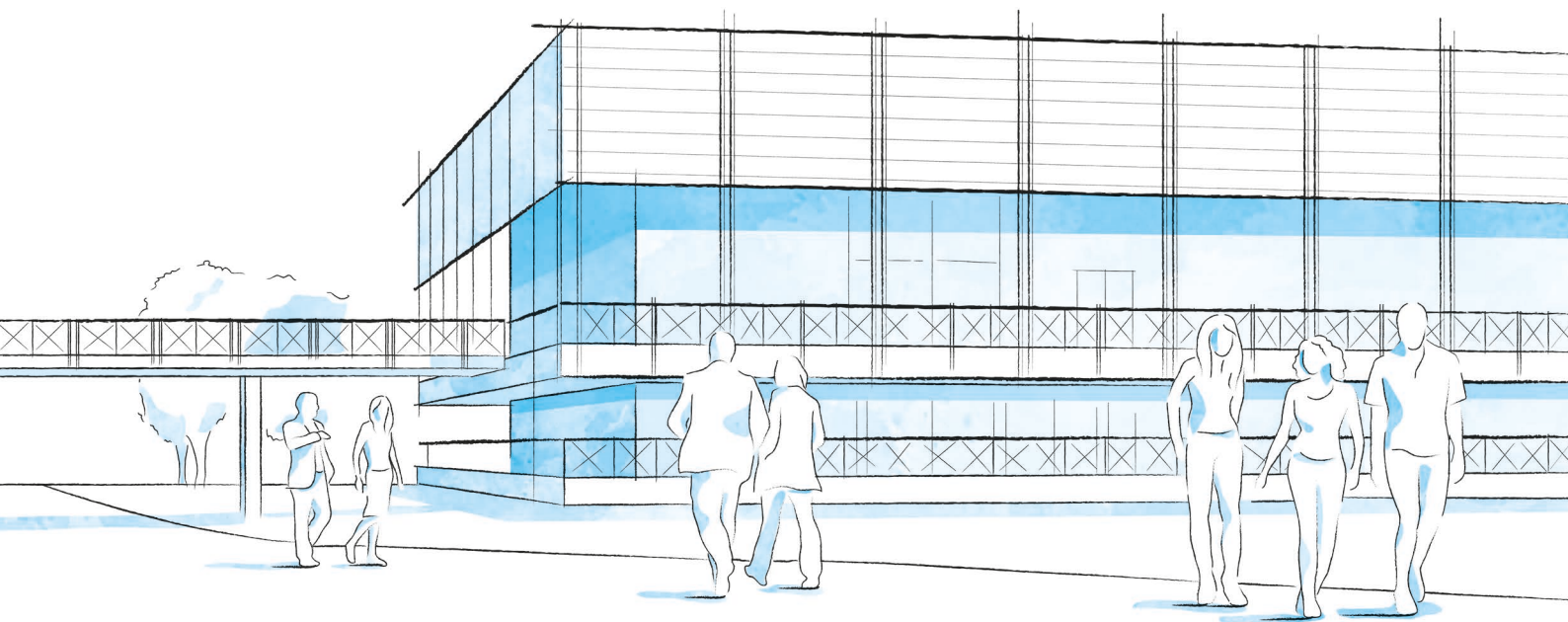
PEER-TO-PEER ASSESSMENT

Critical insights from professionals of ISSA member organizations



SCAN THE QR CODE
OR VISIT

bit.ly/2H3zVgK



CAMPUS LIFE

A THRIVING UNITED NATIONS CAMPUS AND COMMUNITY OF PROFESSIONAL PEOPLE FROM AROUND THE WORLD

- **Three organizations** from the United Nations system on campus
- **More than 300 training courses** and activities in a stimulating international environment
- **Thousands of participants** from all over the world

ENVIRONMENT AND SURROUNDINGS

Grab a campus bicycle and explore the Turin Centre.

Located in a leafy park on the banks of the Po River, it's a great place for study and collaboration. Experience innovative learning and training methods in modern classrooms equipped with simultaneous translation services.

INFO

FOR FURTHER INFORMATION PLEASE CONTACT

International Training Centre of the ILO

Programme on Social Protection,
Governance and Tripartism (SPGT)
Viale Maestri del Lavoro, 10
10127 Turin – Italy

Mr. Charles Crevier
Programme Manager
T +39 011 6936524
spt@itcilo.org
www.itcilo.org

HOUSING, DINING, AND MORE

Comprising more than 280 private dormitories, the **Turin Campus provides a broad range of services for course participants and partners** including a free-flow restaurant, bank, travel agency, laundromat, post office, gym, medical services and a reception desk open 24/7.

COMMUNITY ENGAGEMENT AND DIVERSITY

Participants can enjoy social events organized by the Turin Centre as well as by their course facilitators.

Whether on or off campus, people from different cultural backgrounds have the opportunity to listen to live music together, cook and share traditional foods, or team up to play games and network.

COURSE CODE: A9012756

Made of paper awarded the European Union Eco-label,
reg.nr FR/011/002, supplied by International Paper. 