

SOCIAL PROTECTION

# ADMINISTRATIVE SOLUTIONS FOR EXTENDING COVERAGE

8 – 12 JUNE 2020  
TURIN, ITALY



# ADMINISTRATIVE SOLUTIONS FOR EXTENDING COVERAGE

ISSA GUIDELINES, KNOWLEDGE-SHARING, AND INNOVATION

## OVERVIEW

### SNAPSHOT OF THE COURSE

This course is part of the **ISSA Diploma Programme**, which offers high-level training on the **ISSA guidelines for social security professionals**. ISSA member organizations recognize that enhancing staff skills, nurturing talent, and building competencies are central to building and maintaining a motivated workforce. The ISSA Guidelines on Administrative Solutions for Extending Coverage help professionals deliver services to groups that are difficult to cover, such as self-employed workers, migrant and domestic workers, and agricultural workers. This course helps participants understand and apply the guidelines to their work. Join a network of social security practitioners in this highly specialized course.



PLACE

**TURIN, ITALY**



DATES

**8 - 12 JUNE 2020**



COLLABORATIVE LEARNING

**ONLINE RESOURCES**



LANGUAGES

**ENGLISH**



APPLICATION DEADLINE

**8 MAY 2020**

## WHAT

### WHAT TOPICS DOES THIS COURSE COVER?

This course was designed specifically for social security professionals from ISSA member organizations.

- Administrative solutions
- Social security
- Social protection

### WHAT WILL I LEARN?

All training materials are organized according to the core sections of the ISSA guidelines.

- Topics related to **registration systems**, including how to make them more cost-effective
- All about **collecting contributions and improving compliance**
- How to improve the **timeliness, accuracy, and effectiveness** of services and benefits

### WHAT WILL I BE ABLE TO DO?

Participants leave this course connected to a global network of professionals.

- Adhere to specific **roles and responsibilities** as detailed in the ISSA guidelines
- Reflect on how the guidelines are **applied within your organization**, and strengthen where possible
- Join and interact with a **network of ISSA practitioners**

## WHY

### WHY SHOULD I JOIN?

The course consists of 50 total hours of learning, broken up into three phases.

- The online pre-training phase allows participants to begin **gradually and at different paces**.
- Participants are encouraged to share **individual, international experiences** during the on-site training days.
- Each participant receives a diploma upon completion of the **post-training assignment**.

## WHO

### WHO TAKES THIS COURSE?

- Social security professionals from ISSA member organizations, especially those working to find administrative solutions for extending coverage

## HOW TO APPLY

Go to [bit.ly/327g4oJ](https://bit.ly/327g4oJ) to find the course and apply before **8 May 2020**.

## PRICE

Tuition: €1,650

Subsistence: €635

Total: €2,285

### CAMPUS LIFE

Stay and study on the banks of the Po River

### LEARN DIFFERENTLY

The Centre's training methods include videos and online demos

### HIGH-LEVEL RESOURCES

Learn from ILO specialists, ITCILO trainers, and external lecturers

### THREE PHASES

Learning begins at home, continues in the classroom, and ends with an individual report

### PERSONALIZED TRAINING

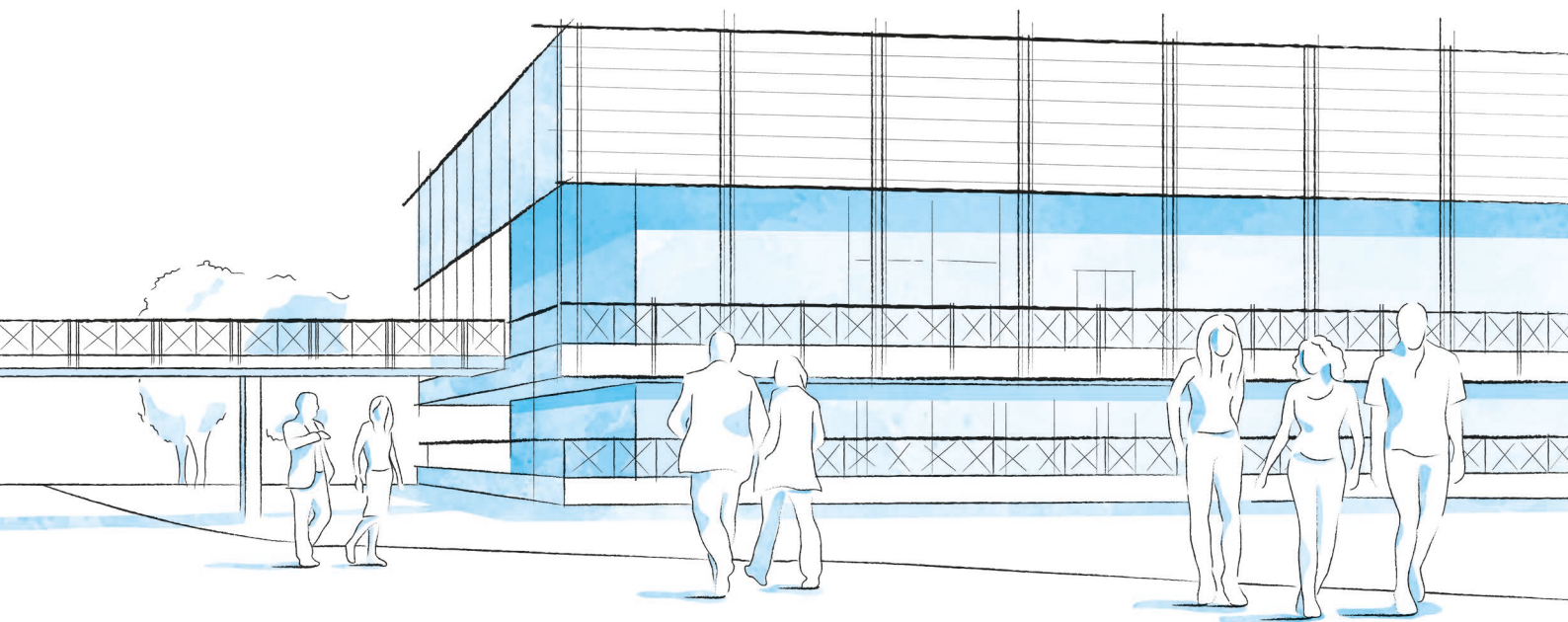
Each participant completes a final assignment related to their organization



SCAN THE QR CODE  
OR VISIT

[bit.ly/2Nyvuf7](https://bit.ly/2Nyvuf7)





## CAMPUS LIFE

### A THRIVING UNITED NATIONS CAMPUS AND COMMUNITY OF PROFESSIONAL PEOPLE FROM AROUND THE WORLD

- **Three organizations** from the United Nations system on campus
- **More than 300 training courses** and activities in a stimulating international environment
- **Thousands of participants** from all over the world

### ENVIRONMENT AND SURROUNDINGS

#### **Grab a campus bicycle and explore the Turin Centre.**

Located in a leafy park on the banks of the Po River, it's a great place for study and collaboration. Experience innovative learning and training methods in modern classrooms equipped with simultaneous translation services.

### HOUSING, DINING, AND MORE

Comprising more than 280 private dormitories, the **Turin Campus provides a broad range of services for course participants and partners** including a free-flow restaurant, bank, travel agency, laundromat, post office, gym, medical services and a reception desk open 24/7.

### COMMUNITY ENGAGEMENT AND DIVERSITY

**Participants can enjoy social events organized by the Turin Centre** as well as by their course facilitators.

Whether on or off campus, people from different cultural backgrounds have the opportunity to listen to live music together, cook and share traditional foods, or team up to play games and network.

## INFO

### FOR FURTHER INFORMATION PLEASE CONTACT

#### **International Training Centre of the ILO**

Programme on Social Protection,  
Governance and Tripartism  
Viale Maestri del Lavoro, 10  
10127 Turin – Italy

Mr. Charles Crevier  
Activity Manager  
Email: [spgt@itcilo.org](mailto:spgt@itcilo.org)  
Phone: +39 011 6936 524

**COURSE CODE: A9012758**

Made of paper awarded the European Union Eco-label,  
reg.nr FR/011/002, supplied by International Paper. 