



SOCIAL PROTECTION

OCCUPATIONAL SAFETY AND HEALTH MANAGEMENT IN THE CONSTRUCTION SECTOR

20 – 30 APRIL 2020
TURIN, ITALY

Information Note



International Labour Office



International Training Centre

BACKGROUND

Construction is one of the most dangerous occupations. One in six fatal accidents at work occurs on a construction site. Each year at least 60,000 fatal accidents occur on construction sites around the world. Yet the causes of accidents are well known and almost all preventable, and as other business issues, occupational safety and health (OSH) can be managed in the enterprise. The ILO adopted the Safety and Health in Construction Convention (No. 167) and its associated Recommendation (No. 175) in 1988. As a complement to these standards, the ILO Code of Practice on Safety and Health in Construction was approved in 1992. In line with the newest trends in OSH management, the ILO developed the Guidelines on Occupational Health and Safety Management Systems in 2001 (ILO OSH 2001). They apply to all economic sectors and are particularly useful in the construction industry as they highlight issues relating to subcontracting.

The International Training Centre of the ILO, Turin, in collaboration with LABADMIN/OSH (the ILO programme to promote OSH) organizes this course in Turin on the principles and guidelines of OSH management within enterprises of the construction sector, with the general purpose of exposing participants to the ILO international experience.

PARTICIPANTS' PROFILE

The course aims at OSH advisers and trainers belonging to government, employers' and workers' organizations involved in the promotion of OSH within enterprises of the construction sector. The programme may also be of interest to other people from professional or industrial bodies, training institutions involved in OSH issues and, above all, managers, supervisors and technical staff in charge of OSH within enterprises of the construction sector.

OBJECTIVES

This course aims at strengthening the capacity for the implementation and development of an OSH management approach in the construction enterprises. Upon completion of this course, participants will be able to:

- Explain the principles and guidelines for the OSH management;
- Identify and analyze the main OSH hazards and risks in the construction sector as well as propose control measures;
- Describe the ILO guidelines for the OSH management in the construction enterprises based on the ILO OSH 2001;
- Explain the key points to prepare, implement, monitor and audit an occupational safety and health plan;
- Analyze the OSH Management System in a construction enterprise in order to propose measures for its improvement.

CONTENTS

- Concepts and principles on OSH. ILO fundamentals on OSH.
- Basic hazards and risks in the construction sector.
- The management systems and the construction sector.
- The ILO approach and the tailored guidelines for the construction sector.
- The OSH Policy; OSH integration in an organization.
- Organization and resources for the implementation of OSH-MS.
- OSH documentation, communication and initial review.
- Prevention principles. Hazard and emergency prevention and control measures.
- Management of change, procurement and contracting.
- Planning priorities, targets and objectives.
- Performance monitoring and measurement.
- Management review

METHODOLOGICAL APPROACH

The methodology will be centred on the participants and the learning process, with the support of a facilitator. The training methodology will promote a permanent communication among participants, through group work and discussions that will facilitate their own total integration and participation in the course activities.

Participants will also be presented with pertinent documentation as a follow-up to the presentations in order to expand the knowledge about the specified topics.

A permanent monitoring of the learning process will be conducted throughout the training by the course co-ordinator. At the end of the course, an individual end-of-course evaluation questionnaire will be used to allow participants to express their views about the training.

PARTICIPATION COST AND APPLICATIONS

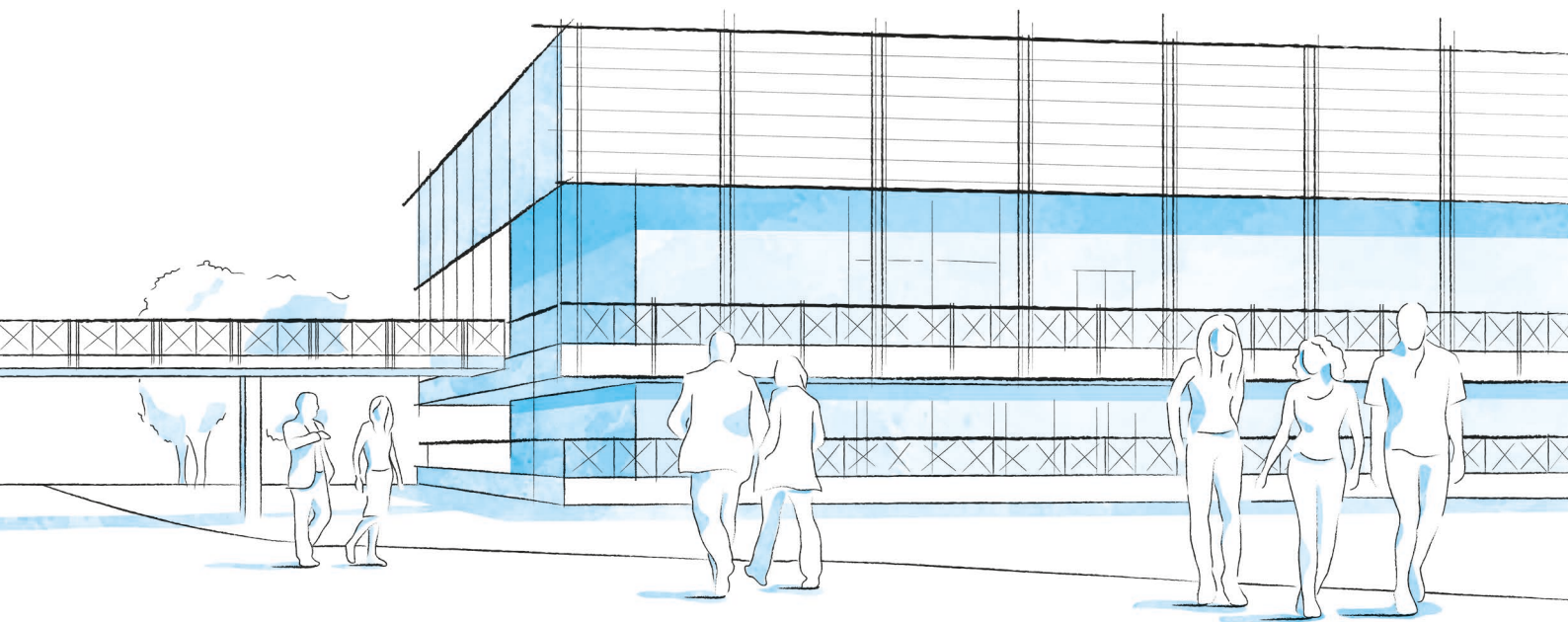
The cost of participation, excluding international air travel, is **EURO 3,575** (course fees EURO 2,280 and participant subsistence, EURO 1,295) payable in advance by the participant or his or her sponsoring organization. This covers tuition fees; the use of training facilities and support services; training materials and books; accommodation and full board at the Centre's campus; and emergency medical care and insurance.

Applications to participate in the course should be done "on line" in the following webpage: <https://oarf2.itcilo.org/STF/A9012769/en>

no later than 13 March 2020

The filled-in application form should be accompanied by a nomination letter from the sponsoring institution indicating how the participant will be financed.

The payment, cancellation and refunds policy of the ITCILO can be consulted in the following website: <http://www.itcilo.org/en/training-offer/how-toapply>



CAMPUS LIFE

A THRIVING UNITED NATIONS CAMPUS AND COMMUNITY OF PROFESSIONAL PEOPLE FROM AROUND THE WORLD

- **Three organizations** from the United Nations system on campus
- **More than 300 training courses** and activities in a stimulating international environment
- **Thousands of participants** from all over the world

ENVIRONMENT AND SURROUNDINGS

Grab a campus bicycle and explore the Turin Centre.

Located in a leafy park on the banks of the Po River, it's a great place for study and collaboration. Experience innovative learning and training methods in modern classrooms equipped with simultaneous translation services.

HOUSING, DINING, AND MORE

Comprising more than 280 private dormitories, the **Turin Campus provides a broad range of services for course participants and partners** including a free-flow restaurant, bank, travel agency, laundromat, post office, gym, medical services and a reception desk open 24/7.

COMMUNITY ENGAGEMENT AND DIVERSITY

Participants can enjoy social events organized by the Turin Centre as well as by their course facilitators.

Whether on or off campus, people from different cultural backgrounds have the opportunity to listen to live music together, cook and share traditional foods, or team up to play games and network.

INFO

FOR FURTHER INFORMATION PLEASE CONTACT

International Training Centre of the ILO

Programme on Social Protection,
Governance and Tripartism
Viale Maestri del Lavoro, 10
10127 Turin – Italy

Mr. Félix Martín Daza
Tel.: +39 011 6936576
Fax +39 011 6391925
E-mail: spgt@itcilo.org

COURSE CODE: A9012769

Made of paper awarded the European Union Eco-label,
reg.nr FR/011/002, supplied by International Paper. 