

LABOUR INSPECTION

STRENGTHENING AND MODERNIZING LABOUR INSPECTION

12 – 23 OCTOBER 2020
TURIN, ITALY

Information Note



International
Labour
Organization



International Training Centre

INTRODUCTION

Labour inspection is an essential part of the labour administration system, carrying out the fundamental function of enforcement and effective compliance with labour legislation.

Labour inspection has a two-fold nature: on the one hand it secures the enforcement of the legal provisions relating to conditions of work and the protection of workers while engaged in their work, such as provisions relating to hours of work, wages, maternity protection, but also occupational safety and health, the employment of young persons, and other connected matters.

On the other hand, labour inspection provides technical information and advice to employers and workers concerning the most effective means of complying with the legal provisions. This dual nature means that labour inspection plays a key role to ensure fairness in the workplace and good governance of the labour market.

The conditions under which labour inspection operates have changed dramatically in recent decades due to technological and economic developments and the effects of globalization. In this context, labour inspection must redefine its organization and intervention strategies, so that it can better respond to the expectations raised by the evolving labour markets.

OBJECTIVES

The course will address the main features of a modern labour inspection system and it will also expose the participants to selected international best practice. It will provide participants with the opportunity to gain new insights, share experiences and reflect on key issues, trends and challenges to modernize their labour inspection system.

At the end of the course participants will be able to:

- Explain the principles, functions and main characteristics of labour inspection;
- Describe the fundamental principles and rights at work;
- Analyze the benefits of a sound labour inspection policy and planning;
- Select appropriate compliance strategies and campaigns;
- Identify the role of labour inspection regarding vulnerable workers and gender issues;
- Improve safety and health at the workplace;
- Perform more technical inspection of construction sites;
- Describe information systems and tools for labour inspection;
- Recognize good practices of labour inspection.

PARTICIPANTS

- Managers of labour inspectorates from central or provincial level;
- Labour inspectors from central or provincial level;
- ILO officials and staff of technical cooperation projects;
- Experts, researchers, trainers and consultants in labour-related issues.

CONTENTS

- The ILO and its standard-setting role;
- Labour administration;
- Principles, functions and main characteristics of labour inspection;
- Labour inspection in the context of public sector reform;
- Labour inspection and social dialogue;
- National systems of occupational safety and health;
- Policy and planning;
- ILO strategic compliance model;
- Labour inspection campaigns;
- Labour inspection visit;
- Occupational safety and health;
- Occupational accidents;
- Fundamental principles and rights at work: freedom of association and collective bargaining; forced labour; child labour; non discrimination;
- Labour inspection and migrant workers;
- Labour inspection of vulnerable workers;
- Information systems for labour inspection;
- Tools for labour inspection;
- Ethics and labour inspection;
- Soft skills for labour inspectors;
- Inspection of construction sites;
- Inspection of selected workplaces;
- Labour inspection and gender issues;
- Project-based inspections;
- Labour inspection and the informal economy;
- Labour inspection and domestic work;
- Selected good practices of labour inspection;
- Capacity building for labour inspection;
- Modernizing labour inspection: way forward.

LANGUAGES

The course will be held in English with simultaneous interpretation into Spanish. Participants will be able to communicate either in English or Spanish.

METHODOLOGY

A participatory approach combining presentations by experts, discussions, exercises, case studies and group work will be adopted throughout the course.

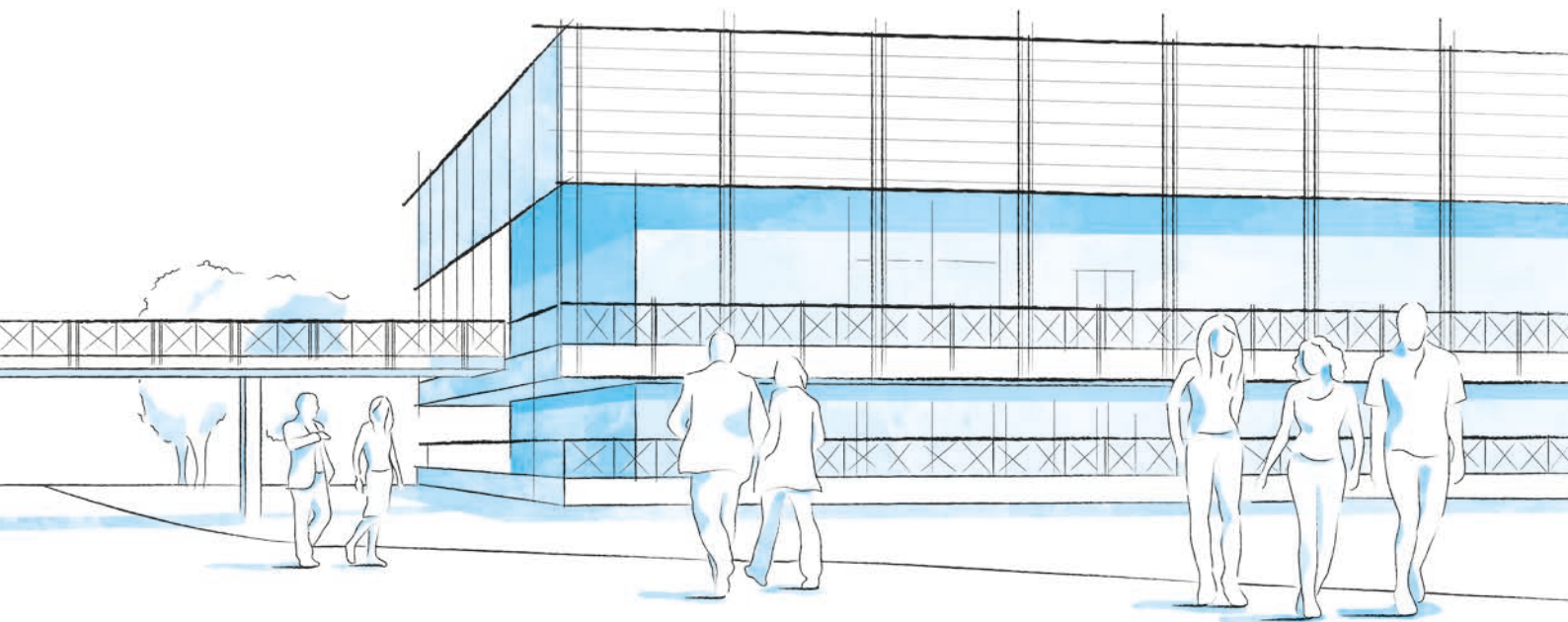
FEES AND APPLICATIONS

Participation cost (**3,795 euros**) includes tuition, training-related documentation and use of campus facilities; single-room accommodation, meals, laundry and emergency medical insurance.

Please note that airfares and airport transfers are not included.

To apply, please complete the online application form, not later than **28 August 2020**, at: <https://oarf2.itcilo.org/STF/A9012796/en>

For information regarding payment, cancellation and refunds, please consult: www.itcilo.org/en/training-offer/application



CAMPUS LIFE

A THRIVING UNITED NATIONS CAMPUS AND COMMUNITY OF PROFESSIONAL PEOPLE FROM AROUND THE WORLD

- **Three organizations** from the United Nations system on campus
- **More than 300 training courses** and activities in a stimulating international environment
- **Thousands of participants** from all over the world

ENVIRONMENT AND SURROUNDINGS

Grab a campus bicycle and explore the Turin Centre.

Located in a leafy park on the banks of the Po River, it's a great place for study and collaboration. Experience innovative learning and training methods in modern classrooms equipped with simultaneous translation services.

HOUSING, DINING, AND MORE

Comprising more than 280 private dormitories, the **Turin Campus provides a broad range of services for course participants and partners** including a free-flow restaurant, bank, travel agency, laundromat, post office, gym, medical services and a reception desk open 24/7.

COMMUNITY ENGAGEMENT AND DIVERSITY

Participants can enjoy social events organized by the Turin Centre as well as by their course facilitators.

Whether on or off campus, people from different cultural backgrounds have the opportunity to listen to live music together, cook and share traditional foods, or team up to play games and network.

INFO

FOR FURTHER INFORMATION PLEASE CONTACT

International Training Centre of the ILO

Social Protection, Governance
and Tripartism Programme
Viale Maestri del Lavoro, 10
10127 Turin – Italy

Mr. Fernando Fonseca
Course manager
tel. +39 0116936312 / fax: +39 0116391922
email: f.fonseca@itcilo.org / www.itcilo.org

COURSE CODE: A9012796

Made of paper awarded the European Union Eco-label,
reg.nr FR/011/002, supplied by International Paper. 