



OCCUPATIONAL SAFETY AND HEALTH

# WORKSHOP ON MANAGEMENT OF OCCUPATIONAL SAFETY AND HEALTH IN INTERNATIONAL ORGANIZATIONS

2 – 6 DECEMBER 2020  
TURIN, ITALY

*Information Note*

## INTRODUCTION

International organizations face the challenge of managing Occupational Safety and Health (OSH). Frequently, the nature of their operations, the legal frameworks of reference or the lack of an integrated approach has resulted on unsatisfactory management systems for the needs of the organizations and their members. As other business issues OSH can be managed in an organization. In general terms, OSH management refers to the practices and organizational measures for the deployment of resources from an initial plan to reach the intended goals in order to ensure that an acceptable level of safety and health is maintained in the organization. An OSH management system method also requires to monitor and evaluate progress toward the previously established goals, and identify areas for improvement.

A common understanding on the general principles, concepts and fundamentals of OSH and its management among all stakeholders could allow them easier discussion, interaction and decision-making within OSH management. The knowledge of the existing and potential hazards, the preventive and protective measures are among the most important issue for the management of OSH. It is therefore very important the development of skills on how to identify hazards, how to assess the relevance of the risks that these hazards pose to the worker's health, how to implement control and preventive measures.

The International Training Centre of the ILO is organizing this workshop in Turin, Italy to acquaint participants with ILO guidelines and principles, as well as with consolidated and successful OSH management practices from other organizations.

## PARTICIPANTS ' PROFILE

OSH coordinators, supportive staff and supervisors involved in the implementation of OSH measures in international organizations; employees' and management's representatives involved in bipartite consultative bodies concerned with OSH in international organizations; external consultants supporting international organizations on OSH.

## LANGUAGE

English

## OBJECTIVES

This workshop provides participants with the knowledge and skills to effectively implement and operate a management system for the improvement of the OSH

Workshop on Management of occupational safety and health in international organizations 3 conditions within international organizations. Upon completion of this workshop, participants will be able to:

- Describe the main concepts and fundamentals as well as the ILO principles on OSH.
- Describe the most relevant hazards concerning their organizations and the most frequent preventive and protective measures to be adopted.
- Analyse and the OSH-MS in an organization in order to propose measures for its improvement
- Transfer knowledge on OSH management and the methodology and steps to carry out a risk assessment in a workplace.

## CONTENTS

- Concepts and fundamentals on occupational safety and health (OSH).
- The ILO principles on OSH.
- Main risks in international organizations.
- Why manage OSH? Management approaches.
- Policy and organization.
- Risk assessment: methodologies.
- Hazard control and prevention and protection measures.
- Monitoring, evaluation and review of OSH performance.
- Reporting, recording and investigation of occupational accidents and diseases.
- Fire prevention and management
- Management of psychosocial risks.
- Health surveillance.

## METHODOLOGICAL APPROACH

The methodology will be centred on the participants and the learning process, with the support of a facilitator. The training methodology will use active methods for learning, making use of the knowledge and the experience of participants, promoting a permanent communication among participants, through group work and discussions that will facilitate their own total integration and participation in the workshop activities.

Participants will also be presented with pertinent documentation as a follow-up to the presentations in order to expand the knowledge about the specified topics.

A permanent monitoring of the learning process will be conducted throughout the training by the workshop co-ordinator. At the end of the workshop, an individual evaluation questionnaire will be used to allow participants to express their views about the training. 4 Workshop on Management of occupational safety and health in international organizations

## PARTICIPATION COSTS AND APPLICATIONS

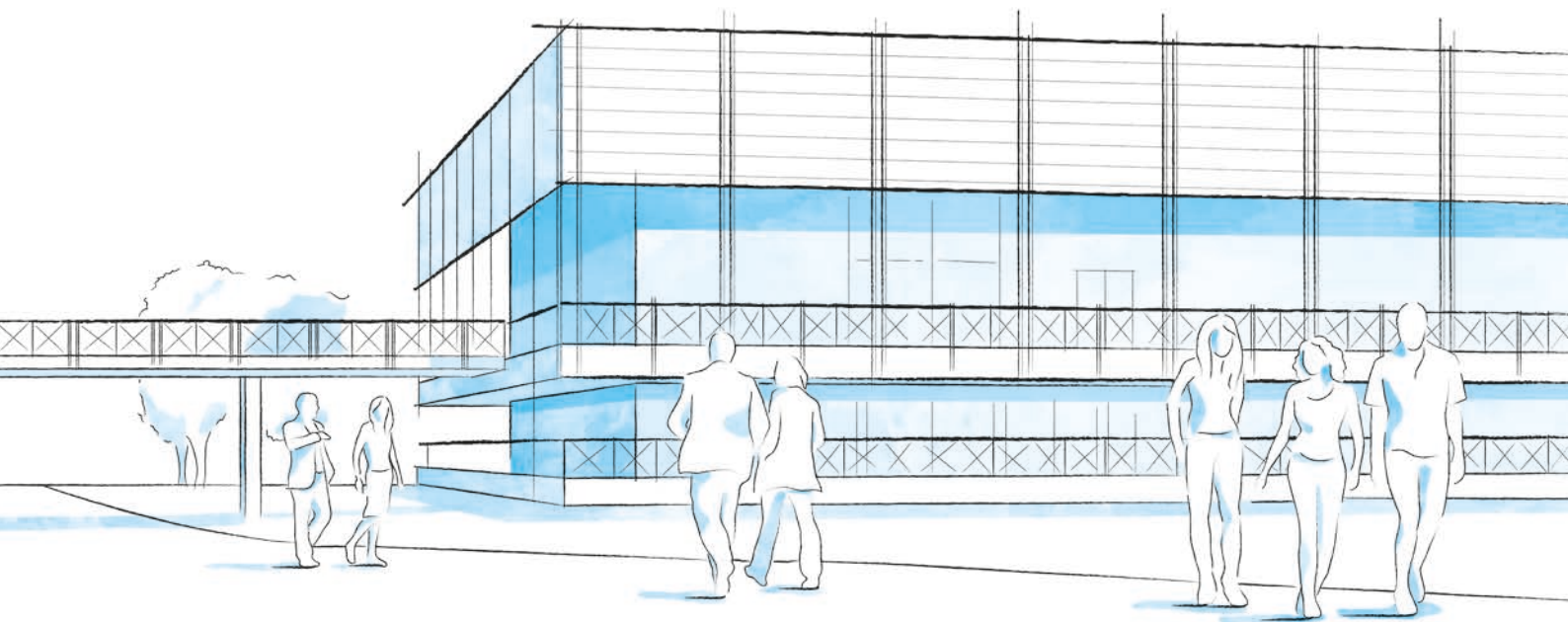
The cost of participation, excluding international air travel, is **€2,285** (workshop fees €1,650 and participant subsistence, €635) payable in advance by the participant or his or her sponsoring organization. This covers tuition fees; the use of training facilities and support services; training materials and books; accommodation and full board at the Centre's campus; and emergency medical care and insurance.

Applications to participate in the workshop should be done on-line on the following webpage: <https://oarf2.itcilo.org/STF/A9012798/en> no later than **26 September 2020**.

The filled-in application form should be accompanied by a signed written communication of commitment from the sponsoring institution indicating how the participant will be financed. After the deadline for applications, the workshop and the selected candidates will be confirmed and the instructions for logistics, travel, visas as well as for the advanced payment, will be provided.

The workshop will not take place with fewer than 12 participants.

The payment, cancellation and refund policy of the ITCILO can be consulted on the following website: <http://www.itcilo.org/en/training-offer/how-to-applyww>



## CAMPUS LIFE

### A THRIVING UNITED NATIONS CAMPUS AND COMMUNITY OF PROFESSIONAL PEOPLE FROM AROUND THE WORLD

- **Three organizations** from the United Nations system on campus
- **More than 300 training courses** and activities in a stimulating international environment
- **Thousands of participants** from all over the world

### ENVIRONMENT AND SURROUNDINGS

#### **Grab a campus bicycle and explore the Turin Centre.**

Located in a leafy park on the banks of the Po River, it's a great place for study and collaboration. Experience innovative learning and training methods in modern classrooms equipped with simultaneous translation services.

### HOUSING, DINING, AND MORE

Comprising more than 280 private dormitories, the **Turin Campus provides a broad range of services for course participants and partners** including a free-flow restaurant, bank, travel agency, laundromat, post office, gym, medical services and a reception desk open 24/7.

### COMMUNITY ENGAGEMENT AND DIVERSITY

**Participants can enjoy social events organized by the Turin Centre** as well as by their course facilitators.

Whether on or off campus, people from different cultural backgrounds have the opportunity to listen to live music together, cook and share traditional foods, or team up to play games and network.

## INFO

### FOR FURTHER INFORMATION PLEASE CONTACT

#### **International Training Centre of the ILO**

Programme on Social Protection,  
Governance and Tripartism  
Viale Maestri del Lavoro, 10  
10127 Turin – Italy

Mr. Félix Martín Daza  
Tel.: +39 011 6936576  
Fax +39 011 6391925  
E-mail: [spgt@itcilo.org](mailto:spgt@itcilo.org)

**COURSE CODE: A9012798**

Made of paper awarded the European Union Eco-label,  
reg.nr FR/011/002, supplied by International Paper. 