



INTERNATIONAL LABOUR STANDARDS

# INTERNATIONAL LABOUR STANDARDS

11 – 22 MAY 2020

TURIN, ITALY AND GENEVA, SWITZERLAND

*Information Note*



*This course is part of the International Labour Standards Academy, jointly organized with the International Labour Standards Department (NORMES) of the International Labour Office.*

*The Academy brings together highly-specialized courses and gathers participants from various professionals backgrounds and regions during the master classes in plenary, in order to explore how the issues that are collectively shaping the world of work connect and relate to international labour standards (ILS).*

## BACKGROUND AND RATIONALE

One of the International Labour Organization's (ILO) oldest and most important functions is the setting of (ILS, which are adopted by the tripartite International Labour Conference and take the form of Conventions, Recommendations and Protocols. Conventions are international treaties that are open to ratification by member States. By ratifying them, member States formally undertake to make their provisions effective, both in law and in practice, and to report on their application at regular intervals. Recommendations are non-binding instruments which provide guidance for national policy, legislation and practice. Protocols are partial and optional revisions or amendments of earlier Conventions. Since the foundation of the ILO in 1919, 190 Conventions, 206 Recommendations and 6 Protocols have been adopted.

ILS are tripartite and universal in character. They are essentially expression of tripartite agreements and are applicable at world level. At the same time, ILS reflect the fact that countries have diverse cultural and historical backgrounds, legal systems, and levels of economic development.

ILS cover a wide range of subjects in the world of work, namely freedom of association, collective bargaining and industrial relations; forced labour; child labour; equality of opportunity and treatment; tripartite consultation; labour administration and inspection; employment policy and promotion; vocational guidance and training; employment security; wages; working time; occupational safety and health; social security; maternity protection; social policy; migrant workers; HIV/AIDS; seafarers; fishers; dockworkers; indigenous and tribal peoples; and specific categories of workers.

Once ILS are adopted, member States are required under the ILO Constitution to submit them to the competent national authority (normally the parliament) on appropriate action. In the case of Conventions, this means consideration for ratification. Almost 8,200 ratifications have been registered so far.

The ILO has developed mechanisms for monitoring the application of ILS in law and practice. These mechanisms, which are unique at the international level, are based on the evaluation by independent experts of the manner in which obligations are complied with and on the examination of cases by the ILO's bodies. If problems in the application of ILS persist, the ILO seeks to assist countries through social dialogue and technical assistance.

## WHO IS THE TARGET AUDIENCE?

- Government officials responsible for matters relating to national and international labour standards, including the fulfilment of the obligations laid down by the ILO Constitution.
- Representatives of employers' and workers' organizations responsible for ILO matters.

## WHY SHOULD I JOIN?

To strengthen national capacity to follow ILS procedures, including the discharge of reporting obligations under the ILO Constitution.

## WHAT WILL I GAIN FROM THIS COURSE?

- Capacity to participate actively in the procedures of standard setting, submission, ratification, regular and special supervision in the fields covered by the ILO's mandate.
- Capability to follow actively the discussion at the International Labour Conference on the adoption and application of ILS.

## WHAT TOPICS DOES THIS COURSE COVER?

- ILO's mandate and structure.
- ILS procedures:
  - standard setting and Standard Review Mechanism (SRM);
  - submission;
  - ratification, entry into force and denunciation;
  - regular system of supervision: reporting procedures (articles 22 and 19 of the ILO Constitution), Committee of Experts on the Application of Conventions and Recommendations, Conference Committee on the Application of Standards;
  - special procedures: freedom of association complaints, representations under article 24 of the ILO Constitution and complaints under article 26 of the ILO Constitution.
- ILS content:
  - core labour standards: freedom of association and collective bargaining, forced labour, child labour, equality of opportunity and treatment;
  - tripartite consultation;
  - labour inspection;
  - employment policy and promotion;
  - occupational safety and health.
- NORMLEX database and other ILS resources on the Net.
- Conference agenda item IV (standard-setting, first discussion), 2021: A framework for quality apprenticeships.

## HOW IS THE COURSE STRUCTURED?

The course will be held on the ITCLO Campus in Turin, Italy, and at the International Labour Office in Geneva, Switzerland. It will consist of ten working days organized as follows:

- from 11 to 20 May 2020: course in Turin;
- on 20 May 2020: travel to Geneva by bus;
- on 21 and 22 May 2020: course in Geneva.

## WHAT ARE THE LANGUAGES OF THE COURSE?

The course will be offered in English, French, Spanish and Portuguese, with simultaneous interpretation. Each language, however, is contingent on the enrolment of a minimum number of participants.

A good command of one of the working languages is required.

## WHAT METHODS WILL BE USED?

- Tripartite approach.
- Presentations (face-to-face and by videoconference).
- Internet demonstrations and videos.
- Role plays, terminology and practical exercises.
- Plenary discussions.
- Knowledge assessment at the start and at the end of the training.

## WHAT MATERIALS WILL BE AVAILABLE?

Role-play training material, specifically developed for this course, will be used to deal with the procedures of the ILS system. Moreover, participants will have access to the eCampus for the course including all training materials and resources.

## WHO ARE THE LECTURERS?

- Two members of the Committee of Experts on the Application of Conventions and Recommendations (CEACR), one of the main ILO bodies supervising the application of ILS by member States.
- Specialists from the International Labour Office and the ITCILO.
- External lecturers.

## HOW TO PREPARE FOR THE COURSE?

To facilitate the sharing of information and experience, each participant will be asked to deliver a report before the course on how ILS reporting is organized in their home country.

## HOW MUCH DOES THIS COURSE COST?

The total cost of participation is **4,540 Euros**. This includes tuition fees (2,550 Euros) and subsistence costs (1,990 Euros).

- The tuition fees cover: course preparation, implementation and evaluation; training materials and books; the use of training facilities and support services, including online resources; emergency medical insurance.
- Subsistence costs cover: full board and lodging on the ITCILO Campus; laundry in Turin; some recreational activities in Turin; travel from Turin to Geneva by bus; accommodation (bed and breakfast) and allowance for meals in Geneva.

The amounts quoted do not include the cost of travel between the participant's home country and the course venue.

Participants must ensure that they have a valid passport and appropriate entry visa for the countries in which the course is held, and for any country in which a transit or stopover to or from the course venues is required.

The cost of the visa, airport taxes, internal travel in the participant's home country and unauthorized stopovers is not covered.

## ARE THERE ANY FELLOWSHIPS?

A very limited number of fellowships are available to qualified candidates coming from eligible countries.

The fact that the course takes place immediately prior to the International Labour Conference allows the participants to attend it at a reduced cost. As the fellowship covers travel costs, the government would only have to pay the daily subsistence allowance for the days the participant stays in Geneva after the course.

## HOW TO PAY FOR THIS COURSE?

Tuition and subsistence costs must be paid in advance before the beginning of the course by the participant or the sponsor through bank transfer or credit card.

Payments by bank transfer should be made to:

International Training Centre of the ILO Account No. 560002

Bank: Intesa-Sanpaolo Ag. 523

IBAN: IT96 G030 6909 2141 0000 0560 002

BIC: BCITITMM

Address: Viale Maestri del Lavoro 10, 10127 Turin – Italy

**Note:** on the bank transfer form, the participant's name and the course code should be indicated.

For payments by credit card, please e-mail to [ils@itcilo.org](mailto:ils@itcilo.org).

For detailed information regarding payments, cancellations and refunds, please consult: <https://www.itcilo.org/application>.

## HOW TO APPLY FOR THIS COURSE?

The deadline for submitting applications is **27 March 2020**.

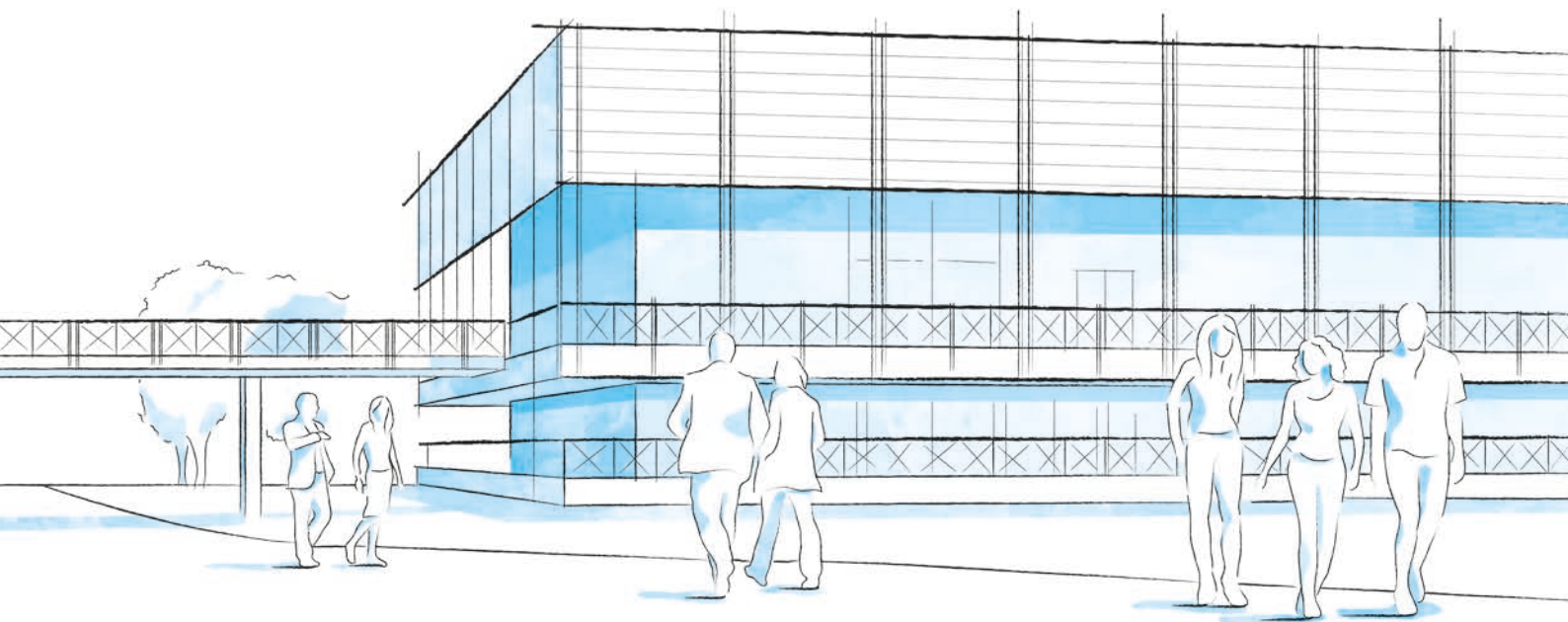
Candidates must submit through the course webpage the following documents:

- on-line application form duly completed , available at: <https://oarf2.itcilo.org/STF/A9012808/en>;
- the annex to the form, with information on the participation in the International Labour Conference and the sponsorship declaration, to be uploaded while filling in the on-line application.

Incomplete applications will not be considered.

Applications from employers' organizations and workers' organizations will have to be endorsed by the Secretaries of the Employers' group and of the Workers' group of the Governing Body of the ILO.

*As an Organization dedicated to promoting social justice and internationally recognized human and labour rights, the ILO is taking a leading role in international efforts to foster gender equality. In line with this ILO focus, women are particularly encouraged to apply to ITCILO courses.*



## CAMPUS LIFE

### A THRIVING UNITED NATIONS CAMPUS AND COMMUNITY OF PROFESSIONAL PEOPLE FROM AROUND THE WORLD

- **Three organizations** from the United Nations system on campus
- **More than 300 training courses** and activities in a stimulating international environment
- **Thousands of participants** from all over the world

### ENVIRONMENT AND SURROUNDINGS

**Grab a campus bicycle and explore the Turin Centre.** Located in a leafy park on the banks of the Po River, it's a great place for study and collaboration. Experience innovative learning and training methods in modern classrooms equipped with simultaneous translation services.

### HOUSING, DINING, AND MORE

Comprising more than 280 private dormitories, the **Turin Campus provides a broad range of services for course participants and partners** including a free-flow restaurant, bank, travel agency, laundromat, post office, gym, medical services and a reception desk open 24/7.

### COMMUNITY ENGAGEMENT AND DIVERSITY

**Participants can enjoy social events organized by the Turin Centre** as well as by their course facilitators. Whether on or off campus, people from different cultural backgrounds have the opportunity to listen to live music together, cook and share traditional foods, or team up to play games and network.

## INFO

### FOR FURTHER INFORMATION PLEASE CONTACT

**International Training Centre of the ILO**  
International Labour Standards, Rights at Work and Gender Equality  
Viale Maestri del Lavoro, 10  
10127 Turin – Italy

Phone: +39.011.693.6516  
E-mail: [ils@itcilo.org](mailto:ils@itcilo.org)  
Website: [www.itcilo.org](http://www.itcilo.org)

**COURSE CODE: A9012808**

Made of paper awarded the European Union Eco-label, reg.nr FR/011/002, supplied by International Paper. 