



INTERNATIONAL LABOUR STANDARDS

INTERNATIONAL LABOUR STANDARDS FOR JUDGES, LAWYERS AND LEGAL EDUCATORS

11 – 22 MAY 2020
TURIN, ITALY

Information Note



This course is part of the International Labour Standards Academy, jointly organized with the International Labour Standards Department (NORMES) of the International Labour Office.

The Academy brings together highly-specialized courses and gathers participants from various professional backgrounds and regions during the master classes in plenary, in order to explore how the issues that are collectively shaping the world of work connect and relate to international labour standards (ILS).

BACKGROUND AND RATIONALE

ILS adopted by the International Labour Organization (ILO) are important tools for the development of national legislation. However, the contribution of international labour law is not limited to its impact on labour legislation. ILS can also contribute to strengthening domestic case law on labour matters.

International labour law is a highly valuable resource for domestic judges and lawyers seeking to settle labour disputes. Together with the comments and analysis of the relevant supervisory bodies, ILS offer a matchless source of interpretation and inspiration for judges and lawyers in ILO member States. Several examples show that domestic courts are increasingly more willing to draw not only on international labour Conventions and Recommendations but also on the work of the ILO supervisory bodies to interpret and complement their domestic law.

The International Training Centre of the ILO (ITCILO) in Turin, Italy, actively promotes the advanced training of law professionals to enable them to make full use of the sources of international labour law in their daily practice.

WHO IS THE TARGET AUDIENCE?

The course is intended for law professionals who are in a position to apply ILS or to teach them. They include:

- judges from courts and tribunals that deal with labour litigation;
- labour lawyers;
- legal experts who represent the interests of employers' or workers' organizations;
- university law teachers.

WHY SHOULD I JOIN?

To acquire the knowledge that will enable me to use international labour law sources at the national level.

WHAT WILL I GAIN FROM THE COURSE?

- In-depth knowledge of the instruments and supervisory machinery of the ILS system.
- Ability to use the analysis and pronouncements of the ILO supervisory bodies.
- Capability to determine in which instances domestic judges and lawyers can use international labour law to solve labour disputes.
- Capacity to identify and make use of ILS in key areas.
- Knowledge on how to use the databases on ILS and on case law relying on them.

WHAT TOPICS DOES THIS COURSE COVER?

- Overview of the ILS system and its procedures, from international drafting to national application.
- When and how domestic judges and lawyers can use international labour law.
- The work of the ILO supervisory bodies and its relevance to domestic judges and lawyers.
- Substance of ILS in selected areas: freedom of association and the right to collective bargaining, forced labour, child labour, equality and non-discrimination in employment and occupation, termination of employment and occupational safety and health.
- NORMLEX database and ITCILO database on court decisions.

The course content is based on the premise that participants are already versed in legal concepts and thinking.

WHAT ARE THE LANGUAGES OF THE COURSE?

The course will be offered in English and French, with simultaneous interpretation. Each language, however, is contingent on the enrolment of a minimum number of participants.

A good command of one of the working languages is required.

WHAT METHODS WILL BE USED?

- Presentations (face-to-face and by videoconference).
- Internet demonstrations and videos.
- Practical activities such as case studies and role-plays.
- Plenary discussions.
- Knowledge assessment at the start and at the end of the training.

The training methods used in the course aim to take advantage of the participants' high-level of competencies and experience.

WHAT MATERIALS WILL BE AVAILABLE?

The materials used in the course include a training manual and a compendium of court decisions from numerous jurisdictions around the world, which have relied on ILS. Moreover, participants will have access to the eCampus for the course including all training materials and resources.

WHO ARE THE LECTURERS?

- Two members of the Committee of Experts on the Application of Conventions and Recommendations (CEACR), one of the main ILO bodies supervising the application of ILS by member States.
- Specialists from the International Labour Office and the ITCILO.
- External experts.

HOW TO PREPARE FOR THIS COURSE?

To facilitate the sharing of information and experience, each participant will be asked to deliver a report before the course on the use of international law in the case law of their home country, with a special focus on international labour law.

WHAT FOLLOW-UP TO THIS COURSE?

All participants will be invited to join the on-line Community of Practice on “International labour standards for judges, lawyers and legal educators”, a network of law professionals who have attended this type of ITCILO courses.

HOW MUCH DOES THIS COURSE COST?

The total cost of participation is **4,620 Euros**. This includes tuition fees (3,220 Euros) and subsistence costs (1,400 Euros).

- The tuition fees cover: course preparation, implementation and evaluation; training materials and books; the use of training facilities and support services, including online resources; emergency medical insurance.
- The subsistence costs cover: full board and lodging on the ITCILO Campus; laundry; some recreational activities.

The amounts quoted do not include the cost of travel between the participant’s home country and the course venue.

Participants must ensure that they have a valid passport and appropriate entry visa for the country in which the course is held, and for any country in which a transit or stopover to or from the course venue is required.

The cost of the visa, airport taxes, internal travel in the participant's home country and unauthorized stopovers is not covered.

ARE THERE ANY FELLOWSHIPS?

A very limited number of partial fellowships, which do not cover travel costs, are available to qualified candidates from eligible countries.

HOW TO PAY FOR THIS COURSE?

Tuition and subsistence costs must be paid in advance before the beginning of the course by the participant or the sponsor through bank transfer or credit card.

Payments by bank transfer should be made to:

International Training Centre of the ILO
Account No. 560002
Bank: Intesa-Sanpaolo Ag. 523
IBAN: IT96 G030 6909 2141 0000 0560 002
BIC: BCITITMM
Address: Viale Maestri del Lavoro 10,
10127 Turin – Italy

Note: on the bank transfer form, the participant's name and the course code should be indicated.

For payments by credit card, please e-mail to jurist@itcilo.org.

For detailed information regarding payments, cancellations and refunds, please consult: <https://www.itcilo.org/applications-payments-cancellation>.

HOW TO APPLY?

The deadline for submitting applications is **27 March 2020**.

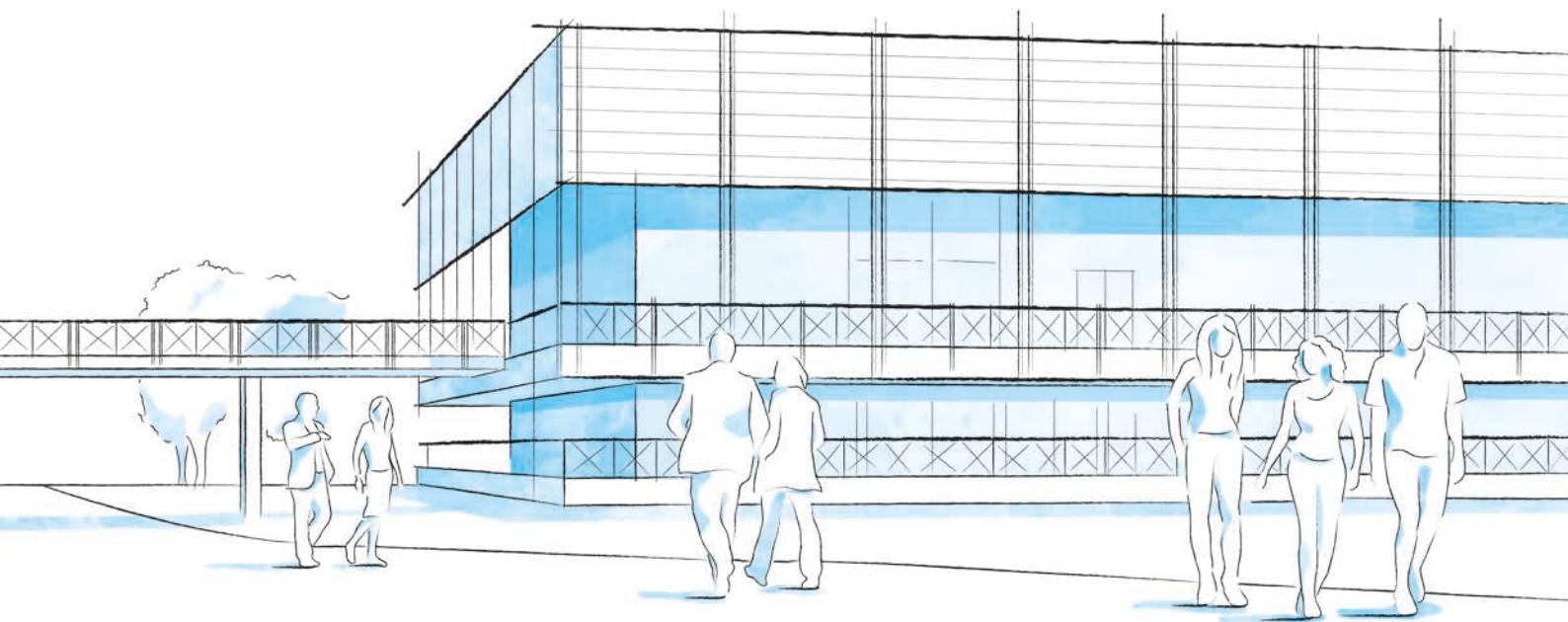
Candidates must submit through the course website the following documents:

- on-line application form duly completed, available at:
<http://intranetp.itcilo.org/STF/A9012810/en>;
- a letter from the sponsor indicating the financial support (or a letter from the applicant stating that participation costs are covered by him/herself), to be uploaded while filling in the on-line application.

Incomplete applications will not be considered.

Applications from employers' organizations or workers' organizations will have to be endorsed by the Secretaries of the Employers' group or of the Workers' group of the Governing Body of the ILO.

As an Organization dedicated to promoting social justice and internationally recognized human and labour rights, the ILO is taking a leading role in international efforts to foster gender equality. In line with this ILO focus, women are particularly encouraged to apply to ITCILO courses.



CAMPUS LIFE

A THRIVING UNITED NATIONS CAMPUS AND COMMUNITY OF PROFESSIONAL PEOPLE FROM AROUND THE WORLD

- **Three organizations** from the United Nations system on campus
- **More than 300 training courses** and activities in a stimulating international environment
- **Thousands of participants** from all over the world

ENVIRONMENT AND SURROUNDINGS

Grab a campus bicycle and explore the Turin Centre. Located in a leafy park on the banks of the Po River, it's a great place for study and collaboration. Experience innovative learning and training methods in modern classrooms equipped with simultaneous translation services.

HOUSING, DINING, AND MORE

Comprising more than 280 private dormitories, the **Turin Campus provides a broad range of services for course participants and partners** including a free-flow restaurant, bank, travel agency, laundromat, post office, gym, medical services and a reception desk open 24/7.

COMMUNITY ENGAGEMENT AND DIVERSITY

Participants can enjoy social events organized by the Turin Centre as well as by their course facilitators. Whether on or off campus, people from different cultural backgrounds have the opportunity to listen to live music together, cook and share traditional foods, or team up to play games and network.

INFO

FOR FURTHER INFORMATION PLEASE CONTACT

International Training Centre of the ILO
International Labour Standards, Rights at Work and Gender Equality
Viale Maestri del Lavoro, 10
10127 Turin – Italy

Phone: +39.011.693.6920
E-mail: jurist@itcilo.org
Website: www.itcilo.org

COURSE CODE: A9012810

Made of paper awarded the European Union Eco-label, reg.nr FR/011/002, supplied by International Paper. 