



INFORMAL ECONOMY

ENTERPRISE FORMALIZATION: POLICIES AND PRACTICES

8 – 12 JUNE 2020
TURIN, ITALY



International
Labour
Organization



International Training Centre

ENTERPRISE FORMALIZATION: POLICIES AND PRACTICES

OVERVIEW

SNAPSHOT OF THE COURSE

Out of every 5 persons employed in the world, 3 are working in the informal economy. Globally, 4 out of 5 economic units are informal. While the informal economy provides a living to many people, it also poses serious challenges.

Informal enterprises contribute to economic and social development through activities that are not protected, regulated, recognized or valued. This generates unfair competition to formal business and leaves a majority of informal economy workers and their families outside the benefits of public policy.

How to measure informality and promote and facilitate the transition of businesses from informal to formal? Join this unique workshop to equip yourself with a comprehensive understanding of enterprise formalization strategies and adapt them to your specific context



PLACE

TURIN, ITALY



DATES

8 – 12 JUNE 2019



LANGUAGES

ENGLISH



APPLICATION DEADLINE

17 MAY 2020

WHO

WHO ATTENDS THIS COURSE?

This course targets decision-makers and practitioners supporting initiatives geared towards the formalization of enterprises and SME development, which extends to governments, workers' and employers' organizations, businesses, as well as business development service providers.

WHAT

WHAT WILL I LEARN?

The course draws on a wealth of policy experience and evidence from country practices and research, covers theoretical and practical dimensions of business formalization, with topics including:

- Measuring and understanding informality
- ILO Recommendation 204
- Strategies to simplify registration and compliance
- Incentives to enterprise formalization
- The role of finance in driving formalization
- Business development services
- Extending protection to workers and enterprises in the informal economy
- Integrated and innovative local strategies

WHAT WILL I BE ABLE TO DO?

The course aims at enhancing your capacity to formulate, implement and/or evaluate enterprise formalization strategies. By participating this training you are anticipated to be able to:

- Diagnose enterprise informality, its scale, drivers, and impacts
- Design strategies to facilitate business formalization in your context
- Support decent work in the informal economy

WHY

WHY SHOULD I JOIN?

The International Training Centre of the ILO is known for its innovative learning experience and globally minded trainers.

- Access hands-on experience and on-going country cases
- Interact with high-level experts on enterprise development and the world of work
- Share insights and exchange with peer participants

HOW TO APPLY

The deadline for submission of applications is **17 May 2020**.

Applications to participate in the course should be done on-line on the following webpage: bit.ly/38g1M7Z

The payment, cancellation and refund policy of the ITCILO can be consulted on the following website: <https://www.itcilo.org/application>

PRICE

Tuition cost: €1,650

Subsistence cost: €635

Total cost: €2,285

RESOURCES

Most updated findings, cases and practical tools from the ILO and other institutions on enterprise formalization

COURSE METHODOLOGY

The 5 days face to face course is complemented with an on-line platform with case studies and learning tools

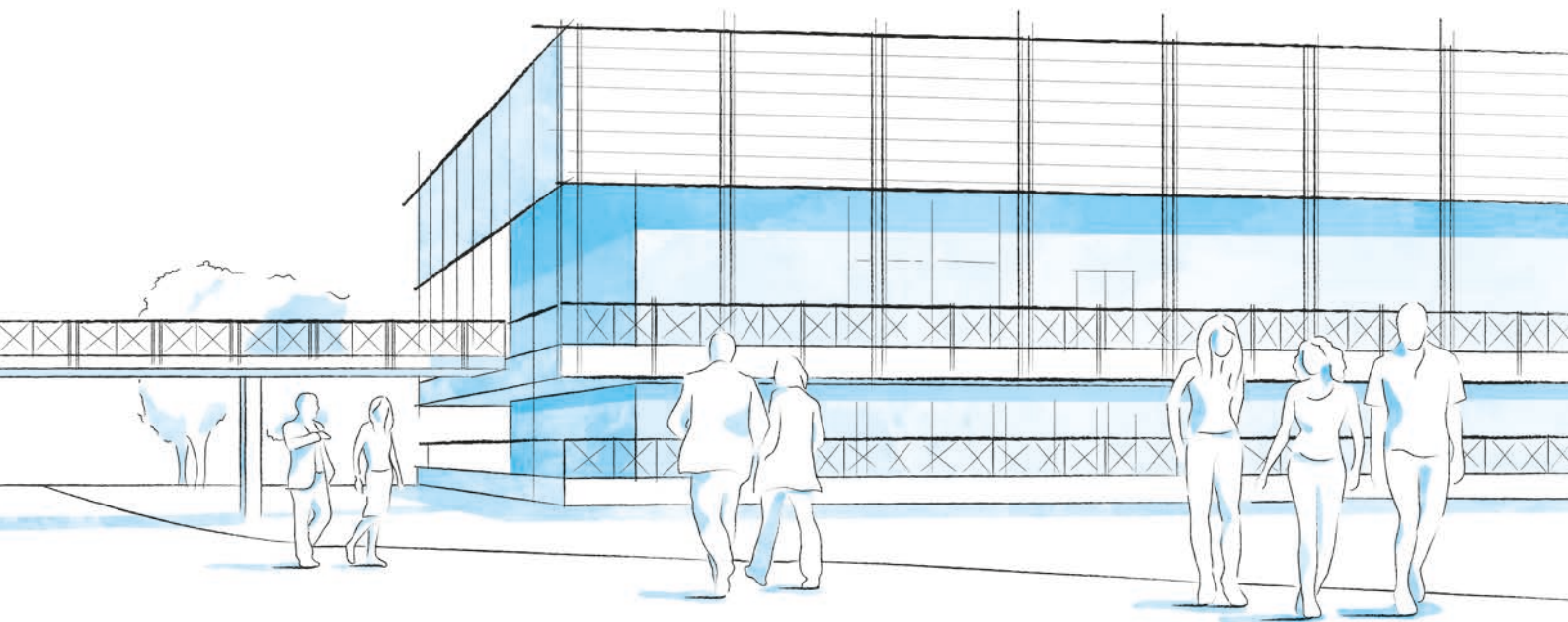
CONTENT

Course content is anchored in ILO Recommendation 204 on the transition from the informal to the formal economy (2015).



SCAN THE QR CODE
OR VISIT

bit.ly/3bkIMbL



CAMPUS LIFE

A THRIVING UNITED NATIONS CAMPUS AND COMMUNITY OF PROFESSIONAL PEOPLE FROM AROUND THE WORLD

- **Three organizations** from the United Nations system on campus
- **More than 300 training courses** and activities in a stimulating international environment
- **Thousands of participants** from all over the world

ENVIRONMENT AND SURROUNDINGS

Grab a campus bicycle and explore the Turin Centre.

Located in a leafy park on the banks of the Po River, it's a great place for study and collaboration. Experience innovative learning and training methods in modern classrooms equipped with simultaneous translation services.

HOUSING, DINING, AND MORE

Comprising more than 280 private dormitories, the **Turin Campus provides a broad range of services for course participants and partners** including a free-flow restaurant, bank, travel agency, laundromat, post office, gym, medical services and a reception desk open 24/7.

COMMUNITY ENGAGEMENT AND DIVERSITY

Participants can enjoy social events organized by the Turin Centre as well as by their course facilitators.

Whether on or off campus, people from different cultural backgrounds have the opportunity to listen to live music together, cook and share traditional foods, or team up to play games and network.

INFO

FOR FURTHER INFORMATION PLEASE CONTACT

International Training Centre of the ILO

Enterprise, Microfinance and Local
Development Programme (EMLD)
Viale Maestri del Lavoro, 10
10127 Turin – Italy

emld@itcilo.org
www.itcilo.org

COURSE CODE: A9012908

Made of paper awarded the European Union Eco-label,
reg.nr FR/011/002, supplied by International Paper. 