



PROCUREMENT

SUPPLY CHAIN MANAGEMENT FOR PROCUREMENT PRACTITIONERS: LOGISTICS, INSURANCE POLICIES AND INCOTERMS

3 - 7 MAY 2021
TURIN, ITALY

Information Note

INTRODUCTION

Dynamic marketplace, rapid technological developments, outsourcing of public service delivery and the increased focus on results-based-management in the public sector have all contributed to the increased eminence and sophistication of the public procurement function with corresponding need for more advanced competence in the set-up and operation of supply chain management systems.

Effective supply chain management systems are indispensable for the economic and timely operation of Public Procurement systems and consequently for the effective delivering of public services.

The procurement team must have the ability to manage the full spectrum of logistical arrangements that facilitate the timely and optimal flow of materials and services from the point of origin to the end user including quantification of procurement requirements, the choice of optimal contractual strategy, the conclusion of transportation and insurance contracts and the arrangements for storage of goods as well as the related information flows between the point of origin and the point of consumption in order to meet end-users' requirements within the ever-increasing constraints on budgetary funding.

In response to the aforementioned developments, the International Training Centre of the International Labour Organisation (ITC-ILO) developed this course in order to enhance the capacity of procurement professionals in dealing with logistics operations as an essential competency for achieving "value for money" in meeting the user's procurement requirements".

OBJECTIVES

The course aims at contributing to the enhancement of the effectiveness of procurement though mastering the required competencies for successful supply chain management including forecasting the procurement requirements, selection of transport means and/or transport forwarding and insurance arrangements as well as receipt and inspection of the requirements and timely distribution to the end-users.

The specific learning objectives are:

- Analysis of public and private organizational context ; systems and procedures for:
 - operative purchasing and "support" functions, internal procurement planning and control of materials usage, approval processes with corresponding integration into the logistics management systems;
 - understanding the disciplines of supply chain management including assessment of risk at each step of the supply chain with emphasis on choice of contracting strategy and tracking/ supervision of contract delivery, warehousing and distribution to end-users.

COURSE METHODOLOGY

The course is delivered by senior procurement practitioners and logistic consultants of ITCILO. The course is conducted using a highly-participative training delivery methodology through a combination of interactive presentations by subject-matter specialists followed by group discussions and exercises. Case studies are used to diagnose areas of risk in logistics operations.

Participants will be provided with prescribed course training modules and reference materials.

COURSE CONTENTS

The training materials explore the full spectrum of supply chain management functions namely:

- Introduction to supply chain management
- Risks in the supply chain management process
- Modes of transport, key provisions of different types of shipping documents (bills of lading, airwaybills, charter party etc...)
- Packing and marking
- Loss prevention measures.
- Freight forwarding arrangements
- Warehousing and distribution: optimal stock levels and replenishments, cost implications, just-in-time delivery, management of distribution.
- Incoterms 2010; division of tasks, costs and risks between the supplier and the buyer in sales contracts for goods;
- Types and key provisions of insurance policies:
 - Marine insurance; LloydsA,B,C clauses
 - Plant and equipment insurance
 - Cash – in transit insurance
 - Motor vehicle insurance
 - Workmen compensation insurance
 - Contractor all risk insurance for building construction and industrial facilities
 - Professional liability –insurance for consultants
 - Insurance of facilities/buildings and grounds.

PARTICIPANTS' PROFILE

The participants are procurement professionals/supply chain management officers, officials of ministries of finance as well as internal controllers and/or auditors of public procurement operations at central, regional and local contracting authorities. The course is also recommended for the staff of IFIs and donor organisations who are responsible for the supervision of procurement operations undertaken by the recipients of their loans and grants.

Participants are expected to read and write easily in the English language.

COST OF PARTICIPATION

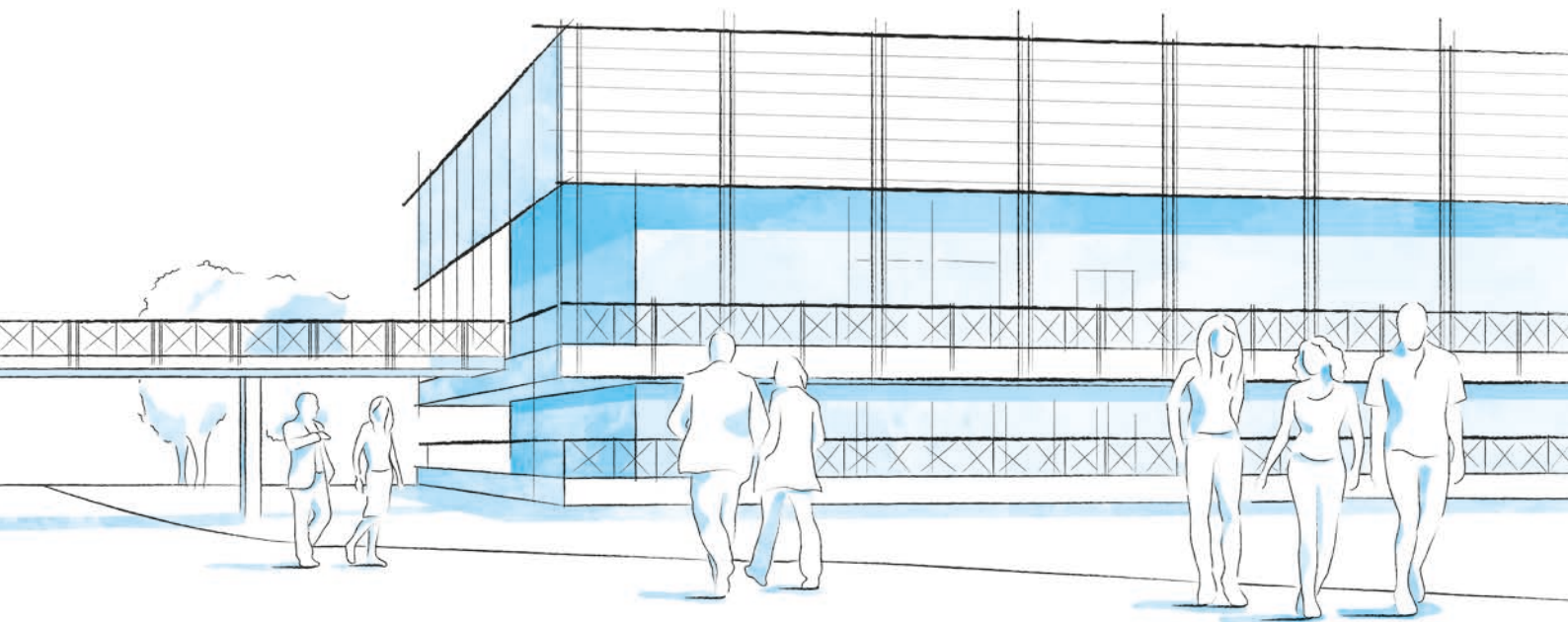
The cost of participation in this one-week programme is **Euro 2,285** payable in advance by the participant's sponsoring organisation. This covers:

- tuition fee, which includes the use of the Centre's training facilities and associated support services, books and training materials, routine medical care and insurance;
- participant fee, which covers:
 - accommodation and full-board at the Centre.

Main travel between the participant's home country and Turin is not included.

For information regarding payment, cancellation and refunds, please consult:

<https://www.itcilo.org/applications-payments-cancellation>



CAMPUS LIFE

A THRIVING UNITED NATIONS CAMPUS AND COMMUNITY OF PROFESSIONAL PEOPLE FROM AROUND THE WORLD

- **Three organizations** from the United Nations system on campus
- **More than 300 training courses** and activities in a stimulating international environment
- **Thousands of participants** from all over the world

ENVIRONMENT AND SURROUNDINGS

Grab a campus bicycle and explore the Turin Centre.

Located in a leafy park on the banks of the Po River, it's a great place for study and collaboration. Experience innovative learning and training methods in modern classrooms equipped with simultaneous translation services.

HOUSING, DINING, AND MORE

Comprising more than 280 private dormitories, the **Turin Campus provides a broad range of services for course participants and partners** including a free-flow restaurant, bank, travel agency, laundromat, post office, gym, medical services and a reception desk open 24/7.

COMMUNITY ENGAGEMENT AND DIVERSITY

Participants can enjoy social events organized by the Turin Centre as well as by their course facilitators.

Whether on or off campus, people from different cultural backgrounds have the opportunity to listen to live music together, cook and share traditional foods, or team up to play games and network.

INFO

FOR FURTHER INFORMATION PLEASE CONTACT

International Training Centre of the ILO
Sustainable Development Programme (SDP)
Viale Maestri del Lavoro, 10
10127 Turin – Italy

sdp@itcilo.org
www.itcilo.org

COURSE CODE: A9013833

Made of paper awarded the European Union Eco-label,
reg.nr FR/011/002, supplied by International Paper. 