



MASTER

SOCIAL DIALOGUE

MASTER IN INDUSTRIAL AND EMPLOYMENT RELATIONS

OPTIONAL RESIDENTIAL PHASE

24 APRIL – 12 MAY 2023

MASTER IN INDUSTRIAL AND EMPLOYMENT RELATIONS



FACE-TO-FACE
TURIN, ITALY
24 APRIL –
12 MAY 2022



LANGUAGE
ENGLISH



APPLICATION DEADLINE
2 MARCH 2023

BACKGROUND

The Master in Industrial and Employment Relations partnered by the International Training Centre of the International Labour Organization (ITCILO) and the University of Turin, Italy, offers an optional residential phase at the ITCILO campus in Turin, Italy, fostering networking among students and to deep dive in our learning centre, before changing focus to the research for the Master thesis.

During this optional phase of the Master in Industrial and Employment Relations, the training expertise of the ITCILO combined with experts in different topics using an action-oriented and highly participative approach will boost the learning experience by combining group discussions, case studies, forum debates, role-play exercises and group work using up-to-date learning methods and technologies. A study visit at the ILO Headquarters in Geneva will also be organized, providing students with engaging sessions with experts from the ILO, as well as a number of study visits to selected institutions and enterprises in Turin, providing students with an opportunity to be exposed to different practices of industrial and employment relations.

All the study visits, including to the ILO Headquarters will depend on the COVID-19 situation and related restrictions.

OBJECTIVES

GENERAL OBJECTIVE

The optional phase of the Master in Industrial and Employment Relations is designed to provide deep knowledge and skills for those with professional interests in industrial and employment relations, notably with an interest in negotiation skills and workplace practices. Students will be exposed to international and comparative industrial and employment relations practices and will be able to discuss and compare with their own countries' practices and context.

SPECIFIC OBJECTIVES

After the optional phase of the Master in Industrial and Employment Relations, students will be able to:

- Understand and apply different approaches to negotiations enhancing their skills;
- Understand key concepts of economics for industrial relations practitioners and apply to negotiations;
- Increase their knowledge of ILO standards and discuss current trends on industrial and employment relations.

STUDENTS' PROFILE

The optional residential phase of the Master in Industrial and Employment Relations is open only to students enrolled in the 2020-2021, 2021-2022 and 2022-2023 Master in Industrial and Employment Relations.

METHODOLOGY AND RESOURCE PERSONS

METHODOLOGY

Professors, practitioners and other resource persons will use lectures, case studies, case law judgments, excerpts of collective agreements and legislation, discussions, group work and practical exercises to strike a balance between theory and practice and to stimulate interaction with the resource persons and among students.

RESOURCE PERSONS

Resource persons are selected based on their professional experience and subject matter expertise. They consist of experts from the ILO and ITCILO, university professors and practitioners.

MODERN METHODS

Learn by doing, through case studies, workshops, and group exercises

INSPIRING DISCUSSIONS

Exchange ideas with international students and faculty

HIGH-LEVEL RESOURCES

Engage with experts from the ILO and the ITCILO, practitioners and university professors.

FEES AND APPLICATIONS

Tuition fees: 2,160 Euros

Subsistence fees: 1,035 Euros (accommodation and breakfast)

Total fees: 3,195 Euros. The cost of participation must be paid in advance by the student or his/her sponsoring organization.

Applications should be made through the online application form on this webpage:

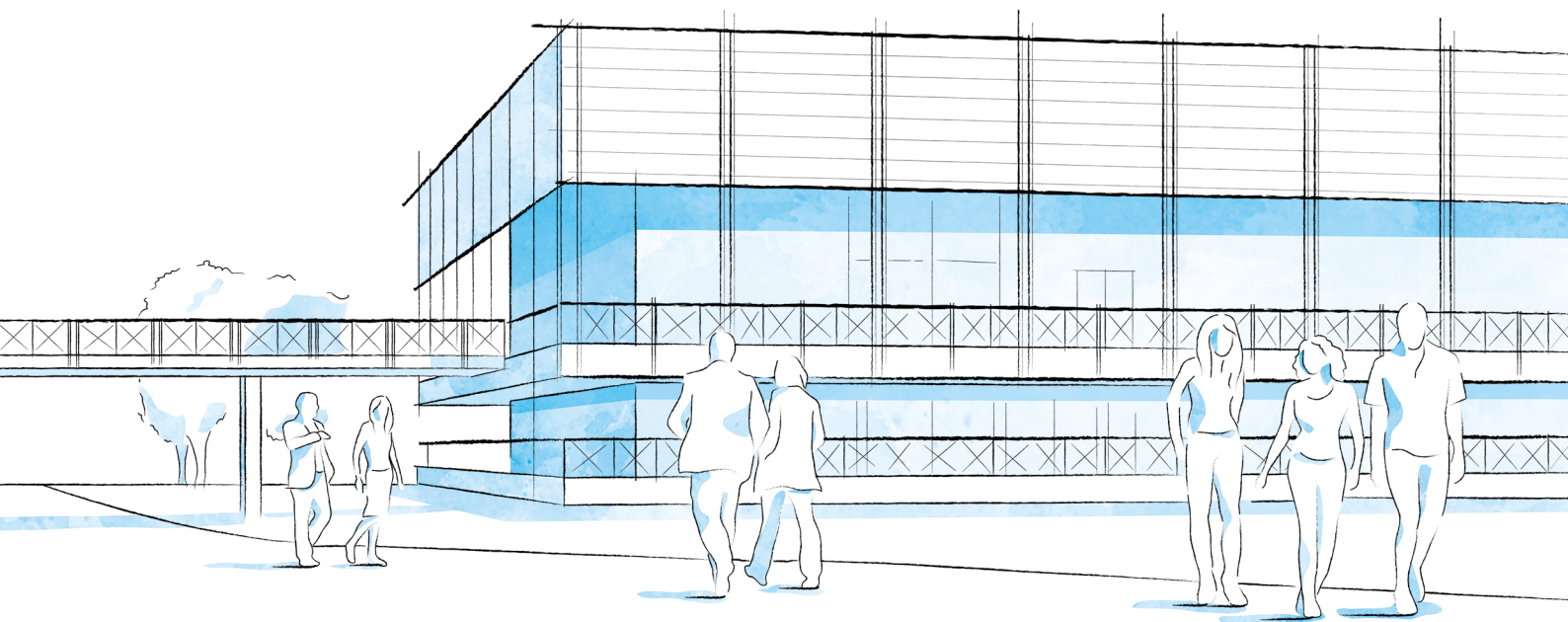
<https://oarf2.itcilo.org/STF/A9015925/en>

DEADLINE FOR APPLICATIONS

Deadline to apply: **2 March 2023**

PAYMENT, CANCELLATION AND REFUND POLICY

The ITCILO's payment, cancellation and refund policy can be consulted on the following website: <https://www.itcilo.org/applications-payments-cancellation>



CAMPUS LIFE

A THRIVING UNITED NATIONS CAMPUS AND COMMUNITY OF PROFESSIONAL PEOPLE FROM AROUND THE WORLD

- **Three organizations** from the United Nations system on campus
- **More than 300 training courses** and activities in a stimulating international environment
- **Thousands of participants** from all over the world

ENVIRONMENT AND SURROUNDINGS

Grab a campus bicycle and explore the Turin Centre.

Located in a leafy park on the banks of the Po River, it's a great place for study and collaboration. Experience innovative learning and training methods in modern classrooms equipped with simultaneous translation services.

HOUSING, DINING, AND MORE

Comprising more than 280 private dormitories, the **Turin Campus provides a broad range of services for course participants and partners** including a free-flow restaurant, ATM machine, travel agency, laundry, post office, gym, medical services and a reception desk open 24/7.

COMMUNITY ENGAGEMENT AND DIVERSITY

Participants can enjoy social events organized by the Turin Centre as well as by their course facilitators.

Whether on or off campus, people from different cultural backgrounds have the opportunity to listen to live music together, cook and share traditional foods, or team up to play games and network.

INFO

FOR FURTHER INFORMATION PLEASE CONTACT

International Training Centre of the ILO

Programme on Social Protection,
Governance and Tripartism
Viale Maestri del Lavoro, 10
10127 Turin – Italy

MIER Secretariat
tel. +39 011 693 6917
mier@itcilo.org



Compagnia
di San Paolo



International
Affairs



SCAN THE QR CODE
OR VISIT

bit.ly/3U5TTJO