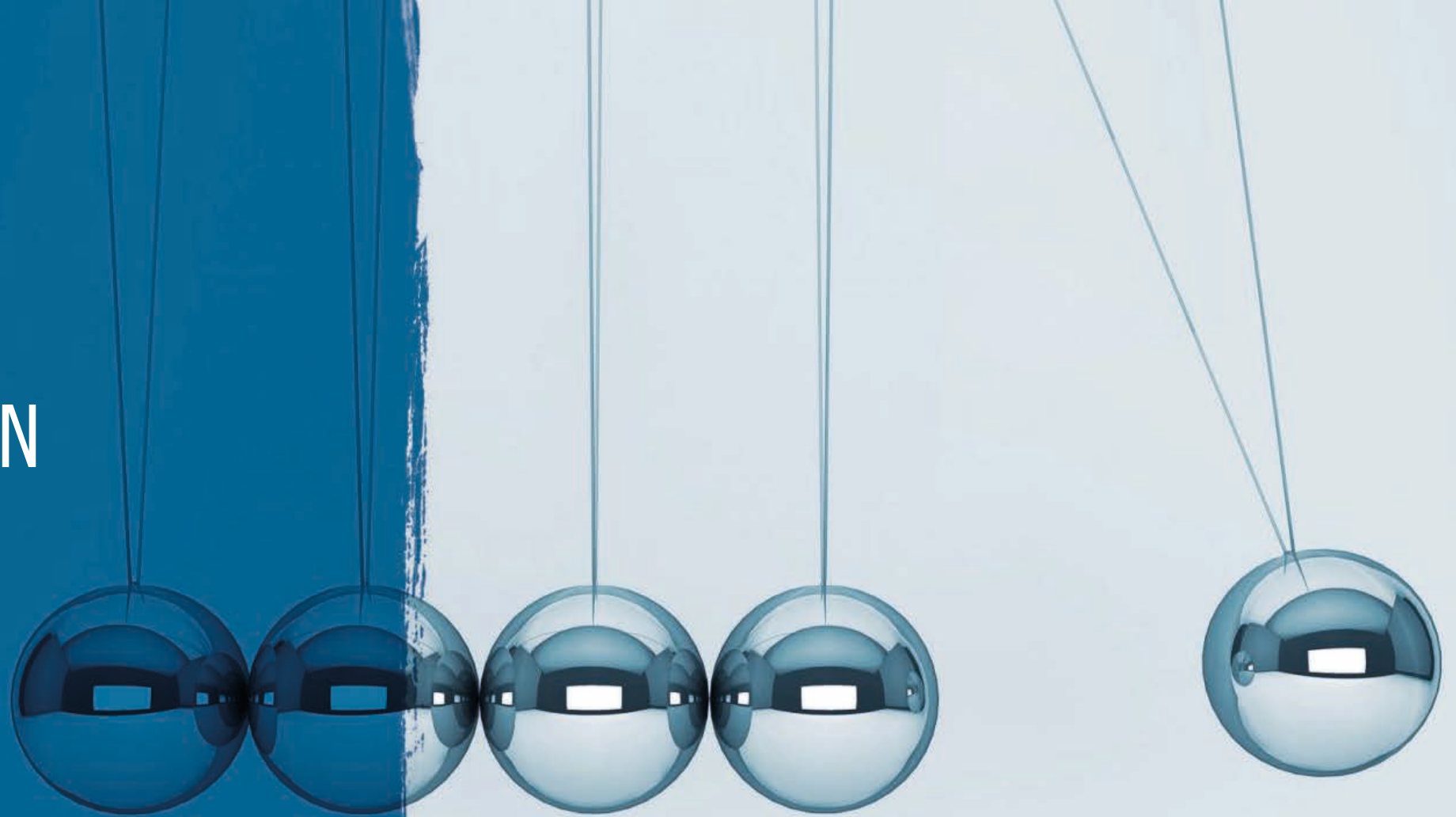


# ONLINE CERTIFICATION PROGRAMME ON IMPACT EVALUATION OF POLICIES, PROGRAMMES AND PROJECTS





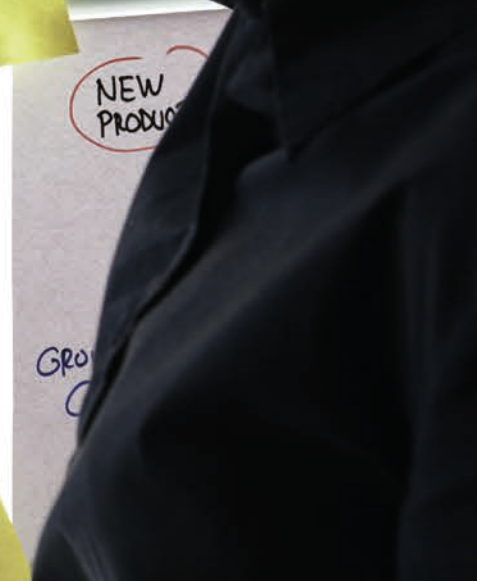
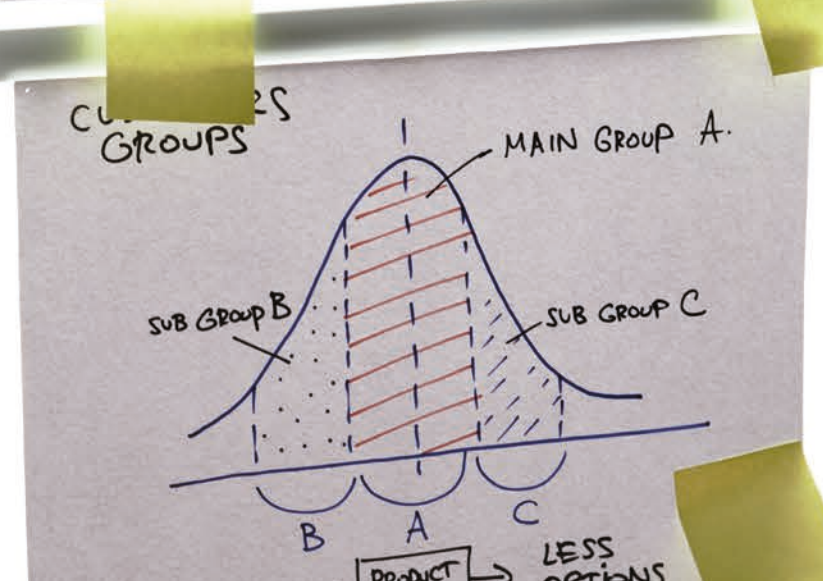
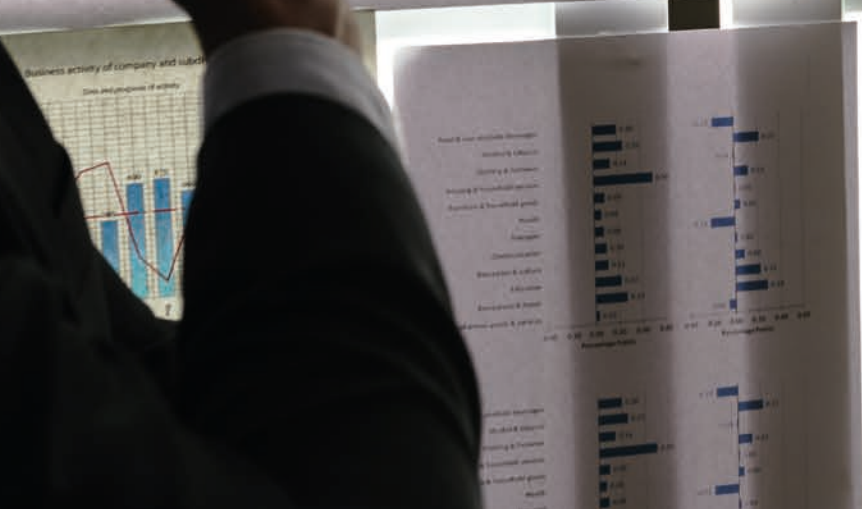
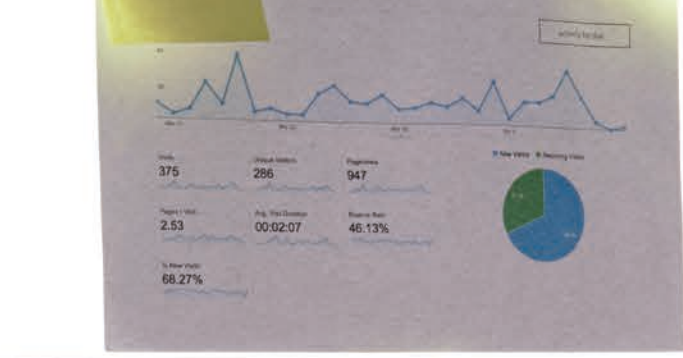


# Overview

This tutor-based online certification programme provides a practical approach to conduct and interpret impact evaluations. It brings together researches, evaluation experts and development practitioners in a collaborative and instructive online space.

**Are you ready to pursue your career as an Impact evaluation Officer, get trained and obtain a certification to achieve it!**





# Why a certification programme on impact evaluation of policies, programmes and projects?

- Conducting rigorous impact evaluations to attribute the positive effects of an intervention and generate useful information on their cost-benefits is essential for policy-makers.
- It can help us to understand whether or not these interventions have had an impact, how large the impact was, who has benefited, in which circumstances it worked, how cost-effective they were, and ultimately provides the basis for sound policy making and effective development assistance.
- Evaluating impact is also particularly important in the current financial context in which public sector resources are scarce; impact evaluations generate new knowledge that then provides a critical input to the appropriate design of future projects, programmes and policies.
- Recognising the need to support the capacity to conduct and interpret impact evaluations, the ILO International Training Centre (ITC-ILO) is organising an online course on impact evaluation of Policies, Programmes and Projects.



# What will I be able to do?

Work with your peers and expand your international network to access new resources, hone your skills and apply them immediately:

- Identify and engage relevant stakeholders throughout the impact evaluation process using technical and soft skills
- Select the most appropriate impact evaluation methodology to respond to the unique context of the intervention and to the prevailing constraints of data, time and money, and context.
- Design a customised impact evaluation scheme for the unique context of a development intervention of your choice.
- Build an operational plan to conduct the impact evaluation
- Collect, process, and analyse data to evaluate impact using quantitative and qualitative approaches
- Use impact evaluation results for informing decision-making and economic analyses.









# What certification will I get as a successful candidate?

- You will obtain a certificate of achievement once you have completed successfully the programme requirements.
- This certificate will demonstrate that you possess the right knowledge, skills and attitudes to design, plan, budget and conduct impact evaluations evaluations.
- At the end of the programme, you will have designed and performed all functions to conduct an impact evaluation as part of the certification programme - a great addition to your CV!



# Why should I join?

This course is delivered through distance learning and deployed on the ITCILO e-campus. It frees you from the classroom and gives you the flexibility to complete the learning modules at your own pace and to carry-through weekly assignment within your schedule.

- Evidence-based management and impact evaluation skills are essential to professionals working in the public and development sectors.
- Employers that sponsor participants obtain the possibility to create an impact evaluation scheme for one of their development interventions.
- Successful participants receive a professional certification attesting their capacity to effectively design and conduct impact evaluation.
- The programme was developed and is implemented by evaluation experts and practitioners, researchers and development cooperation managers.
- Participatory activities include self-guided modules, webinars, online forum, practical assignments, individualized coaching, and tutoring.
- Participants get permanent access to the e-Campus portal on impact evaluation, training material, and references. Who takes this course?

# Who takes this course?

- Monitoring and evaluation specialists;
- Independent evaluators;
- Researchers;
- Project coordinators and programme managers;
- Donor staff appraising and evaluating projects and programmes;
- Policy-makers;
- Non-governmental organization officials involved in monitoring and evaluating.





# What are the programme objectives?

Specifically, the training will serve the three following objectives:

- Improve understanding of concepts and methods to design an impact evaluation based on a counterfactual or based on qualitative data;
- Assess the cost-effectiveness of development interventions;
- Identify impact evaluation options that recognize budget, time and data constraints, and that best suit the needs of specific programmes, countries and institutional context;
- Strengthen the technical capability to understand, interpret and identify the pros and cons of quantitative impact evaluations (experimental and quasi-experimental design), qualitative impact evaluations and costs-benefits analysis.
- Analyze data to perform impact evaluations and cost-benefits analysis.

# What does the programme contain?

Identify areas of improvement and brush up on your technical and managerial skills:

- Evaluations of development cooperation impacts: the recurring dilemma of attribution versus contribution
- Quantitative and qualitative approaches to impact evaluations
- Experimental and quasi-experimental impact evaluation design
- Contribution, correlation, and longitudinal studies to evaluate the impact
- Methods of data collection, processing and analysis for impact evaluations
- Managing and utilizing the impact evaluation for decision making and development of new knowledge
- Data analyses: impact evaluation, cost-effectiveness and cost-benefit analyses.







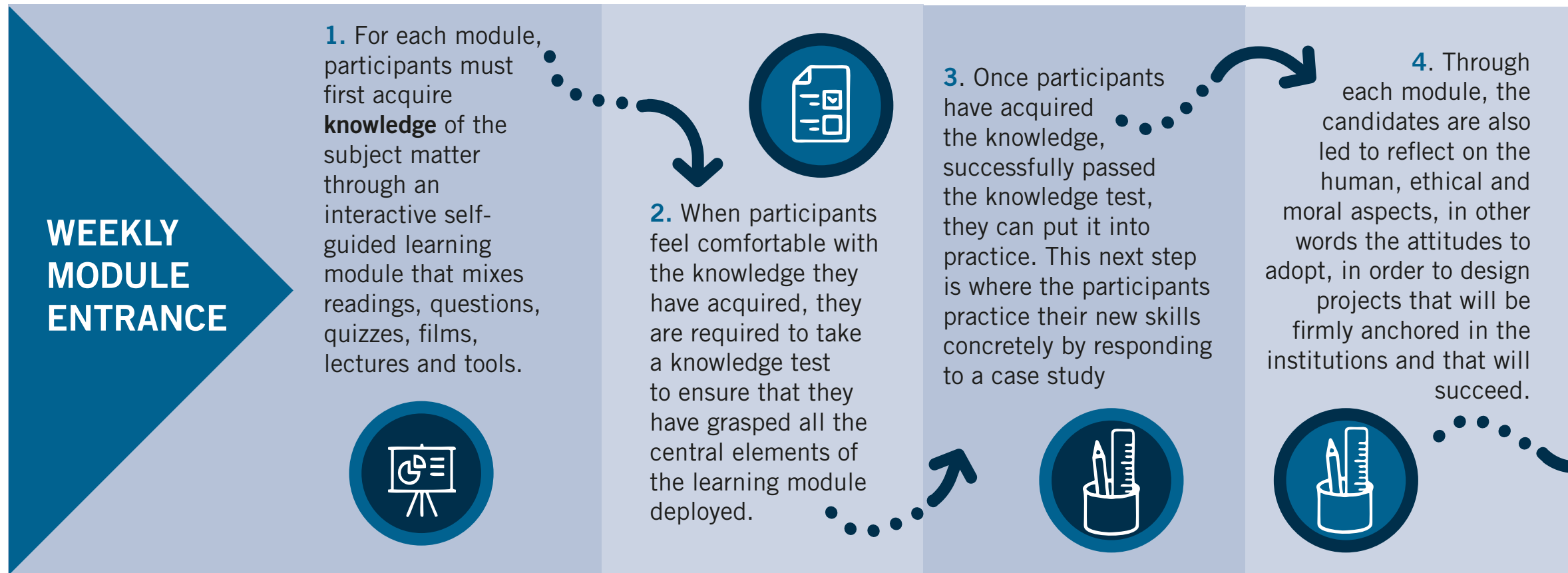




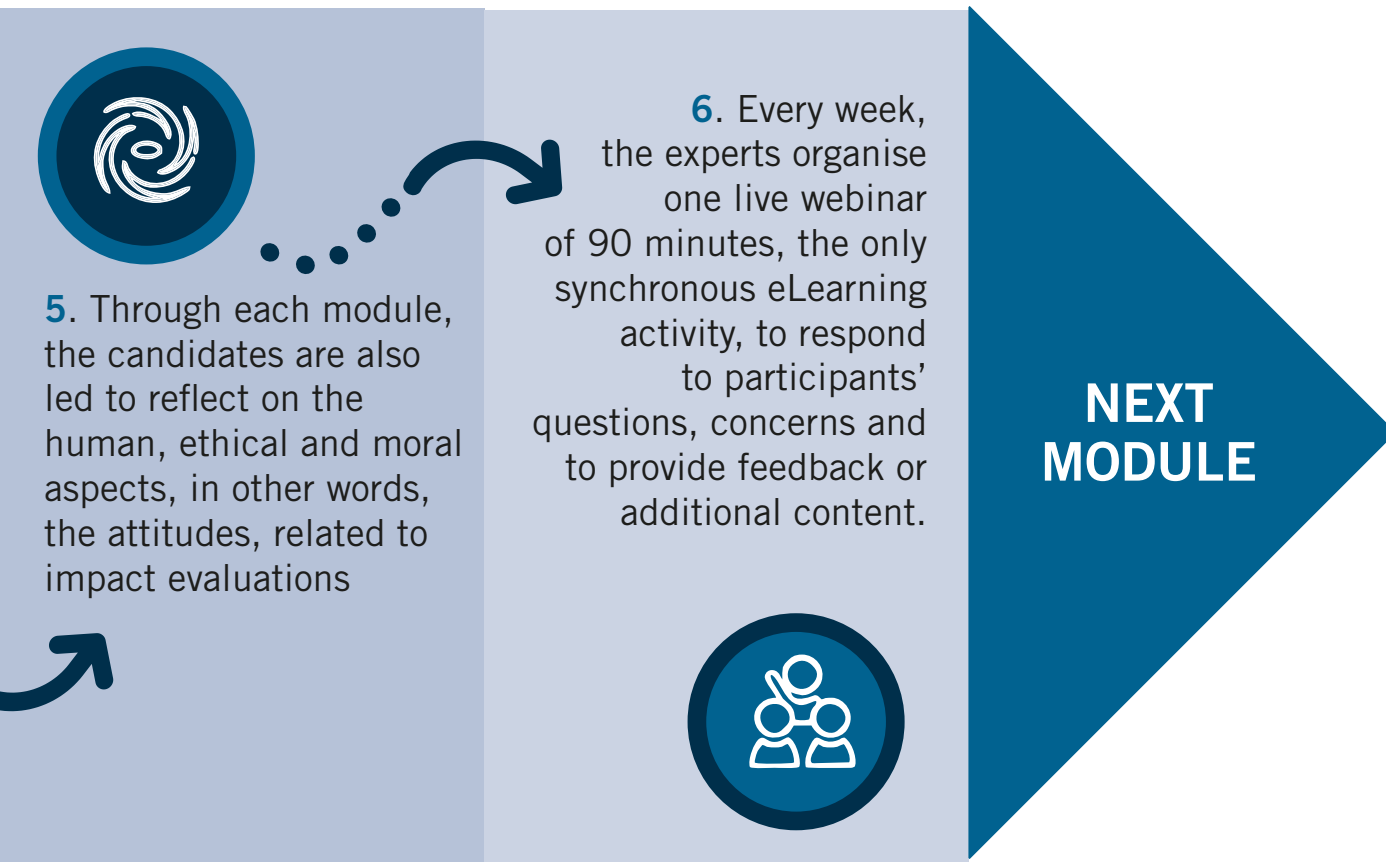
# Detailed themes

- General concepts and considerations for evaluation
- Selecting the right approach and methodologies to design an impact evaluation
- A step-by-step approach to designing an impact evaluation
- Conceptualization of the impact evaluation scheme: purpose, scope, impact evaluation questions, and methodology
- Plan and use data collection methods and data management in the context of impact evaluations
- Analysis of quantitative and qualitative data to assess programme or project intervention causality
- Organizing the impact evaluation: contracting and managing consultants
- Data collection and analysis
- Reporting, dissemination, and use of impact evaluation conclusions
- Engaging stakeholders in impact evaluations

# What approach and methodology is used to deliver the online certification programme?







## Assessing the certification programme candidates

- Each week, participants build or rework a component of their own impact evaluations, these single pieces are assessed and graded all along the implementation of the programme.
- Nevertheless, to assess the coherence and interdependences between the learning objectives, participants are ultimately required to assemble all elements to complete and document a plan to conduct an impact evaluation.
- It is through this final document that programme assessors can ultimately perform the certification of impact evaluation specialists.



# Who is behind the programme?

The content experts behind this course are ITCILO senior monitoring and evaluation specialists and international project management consultants/experts.

# Conditions to participate

## WHAT ARE THE TECHNICAL REQUIREMENTS NEEDED?

For an interactive and successful learning experience, you need a computer with a good internet connection and speakers, as this course uses multimedia often.

## HOW TO APPLY?

Go to our website:

**<https://www.itcilo.org/courses/impact-evaluation-policies-programmes-and-projects>**

## HOW MUCH DOES IT COST?

Tuition: Euros 995





INTERNATIONAL TRAINING CENTRE OF THE ILO  
Organizational Development and Project Services Programme  
Viale Maestri del Lavoro, 10  
10127 Turin – Italy  
[s.guillen@itcilo.org](mailto:s.guillen@itcilo.org)

Design and layout by the International Training Centre of the ILO, Turin – Italy