



LABOUR MIGRATION

# MEASURING AND ANALYSING LABOUR MIGRATION

20 – 24 APRIL 2020  
TURIN, ITALY

*Information Note*

## OVERVIEW

Globalization, demographic shifts, conflicts, income inequalities and climate change will encourage ever more people to cross borders in search of employment and security. Labour migration affects most countries in the world, and migrant workers contribute greatly to development, both in countries of origin and countries of destination. Yet, the migration process entails complex challenges in terms of fair and effective governance, migrant workers' protection, migration and sustainable development linkages and international cooperation.

The need to improve the knowledge base in the area of labour statistics, particular labour migration statistics will contribute to a better understanding of the underlying causes of poverty and social exclusion. This is important as the international migrant's workers are in search of better opportunities for decent work in the host countries. In this context, various countries have put in their priorities the development of evidence-based policies as part their reporting on progress on different Agenda 2063/SDGs target; more specifically to get information on decent work deficits among the residents' population as well as migrants. Hence, accurate, robust and timely data collected in line with the international standards, are necessary to build effective labour migration policies, essential to improve the welfare of international migrant workers and address the challenges related to international labour migration, globally and at the national level. Finally, in order to assess the level of policy coherence among employment and labour migration policies and identify where current and potential challenges remain, there is a need to collect and analyze, in a systematic way and to the extent possible, appropriate quantitative and qualitative information.

In this regard, the International Training Centre of the ILO (ITCILO) in partnership with the ILO Department of Statistics in collaboration with the Labour Migration Branch of the International Labour Organization are proud to present the first edition of the course "Measuring and Analyzing Labour Migration". The course will capitalize on the long experience of the ITCILO in organizing capacity-building activities focused on labour migration and statistical analysis of the labour market. Moreover, the course will also utilize the vast technical knowledge and experience possessed by both the ILO Department of Statistics and the Labour Migration Branch of the ILO. The course will provide a comprehensive understanding concerning measuring Labour Migration based on the ILO methodological approaches and the latest recommendations of the International Conference of Labour Statisticians (ICLS).

# CONTENT

The course will focus on:

- ILO labour migration statistics concepts and definitions
- ICLS Guidelines concerning statistics of international labour migration.
- Sampling of international migrant populations: Methodological approaches and country examples.
- ILO Global and regional estimates on international migrant workers
- Measuring demand for foreign labour
- Collecting data on international labour migration statistics: ILO labor migration database.
- Administrative sources for international labour migration statistics.
- Measurement of recruitment costs (SDG 1.7.1)
- Assessment and measurement of the level of policy coherence

## WHAT WILL I LEARN?

The **main objective** of the course is to “to equip national and international stakeholders with the necessary capacities to better measure and analyze international labour migration and produce timely, high-quality, updated international labour migration statistics, to report on the critical indicators of labour migration statistics based on the implementation of international statistical standards and guidelines for evidence-based policy-making.”

Upon completion of the course, participants will have:

- **Enhanced** understanding about the basic definitions, terminologies, and resolutions of labour statistics;
- **Acquired** a better understanding of labour statistics and indicators aligned to the ICLS Guidelines concerning statistics of international labour migration, as well as the approved SDG indicator 10.7.1 measuring the recruitment costs impacting on migrants workers;
- **Analyzed** different methods and tools related to quantitative and qualitative methods needed to produce regular, accurately, and timely reports concerning labour statistics that include the Labour migration module (ILMS questionnaire);
- **Attained** a comprehensive understanding of the latest international standards and practices in official statistics for better coordinated data collection related labour migration statistics;
- **Enriched** understanding of the necessary institutional mechanisms, policy frameworks, and coordination instruments for better production and dissemination of migration labour statistics for evidence-based policymaking.

## WHY SHOULD I JOIN?

The course methodology will be based on a combination of different learning methodologies, alternating presentations by recognized subject-matter specialists with interactive and participatory exercises, country examples, case studies and spaces for knowledge sharing and reflection. Participants are encouraged to bring with them any document they deem interesting to share, in particular guides and reports on methodologies or anticipation exercises carried out in their countries and any other documentation relevant to this course.

The course methodology is constructed as follows:

- Interactive
- Hands-on, wherever possible

Structured to combine

- Expert presentations
- Group discussions and exercises
- Group work
- Country Experiences and insight from the field

## WHO?

The target audience for the course includes:

- Statisticians and analysts from National Statistical Offices;
- Policymakers and technical advisors of Ministries of Employment/Labour, Ministries of Education, Ministries of Manpower/Migration, as well as other Ministries working on labour migration;
- Managerial and technical staff of research and academic institutions responsible for the collection and analysis of labour market information;
- Relevant staff from Public Employment Services and other institutions engaged in measuring labour migration;
- International organizations; international cooperation agencies, development agencies, and non-governmental organizations;
- Representatives of workers and employers' organizations, public/private sector representatives.

## HOW TO APPLY?

Early application is strongly recommended since admission is competitive and space is limited!

Interested candidates should register on-line through this link:

<https://oarf2.itcilo.org/STF/A9012878/en>

### **Selection will be based on the following criteria:**

- Proven work experience in relevant field;
- Submission of a letter of sponsorship to cover the course cost including the cost of travel to and from Turin; and
- Submission of a cover letter explaining how the course will help the participant enhance their professional skills and how they will use these skills in their respective organizations.

Kindly note that we need to fulfill the selection criteria above-mentioned in order to register you for the course; the application form alone is not enough.

We highly encourage the participation of women and persons with disability.

**The deadline for applications is 20 March 2020!**

## PRICE

The course is fee-paying. The total cost is euro **€2,285** and it is composed of the following:

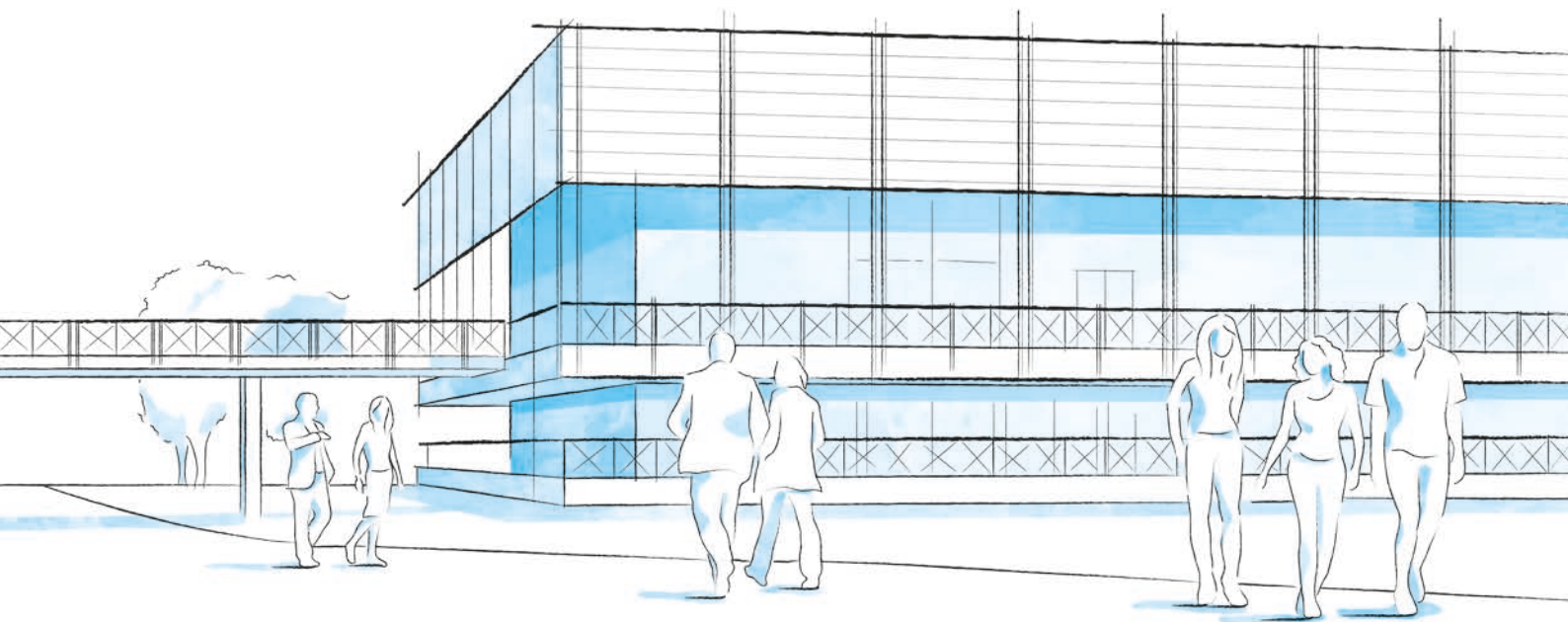
- **Tuition: €1,650**
- **Subsistence: €635**
- **Total: €2,285**

The tuition cost of **€1,650** covers the cost of programme development and management, secretarial and administrative support costs, the use of training facilities and teaching equipment, office supplies and training materials. Also included is emergency medical insurance.

The participant's accommodation and subsistence cost of **€635** covers lodging and subsistence at the ITCILO campus.

**A limited number of partial fellowships will be available!**

**Fellowships will be allocated on a case-by-case basis. Priority in scholarship allocation will be given to candidates who strongly fulfil the selection criteria above-mentioned!**



## CAMPUS LIFE

### A THRIVING UNITED NATIONS CAMPUS AND COMMUNITY OF PROFESSIONAL PEOPLE FROM AROUND THE WORLD

- **Three organizations** from the United Nations system on campus
- **More than 300 training courses** and activities in a stimulating international environment
- **Thousands of participants** from all over the world

### ENVIRONMENT AND SURROUNDINGS

**Grab a campus bicycle and explore the Turin Centre.** Located in a leafy park on the banks of the Po River, it's a great place for study and collaboration. Experience innovative learning and training methods in modern classrooms equipped with simultaneous translation services.

### HOUSING, DINING, AND MORE

Comprising more than 280 private dormitories, the **Turin Campus provides a broad range of services for course participants and partners** including a free-flow restaurant, bank, travel agency, laundromat, post office, gym, medical services and a reception desk open 24/7.

### COMMUNITY ENGAGEMENT AND DIVERSITY

**Participants can enjoy social events organized by the Turin Centre** as well as by their course facilitators. Whether on or off campus, people from different cultural backgrounds have the opportunity to listen to live music together, cook and share traditional foods, or team up to play games and network.

## INFO

### FOR FURTHER INFORMATION PLEASE CONTACT

**International Training Centre of the ILO**  
Employment Policy and Analysis  
Programme (EPAP)  
Viale Maestri del Lavoro, 10  
10127 Turin – Italy

Imstats@itcilo.org  
www.itcilo.org

**COURSE CODE: A9012878**

Made of paper awarded the European Union Eco-label, reg.nr FR/011/002, supplied by International Paper. 