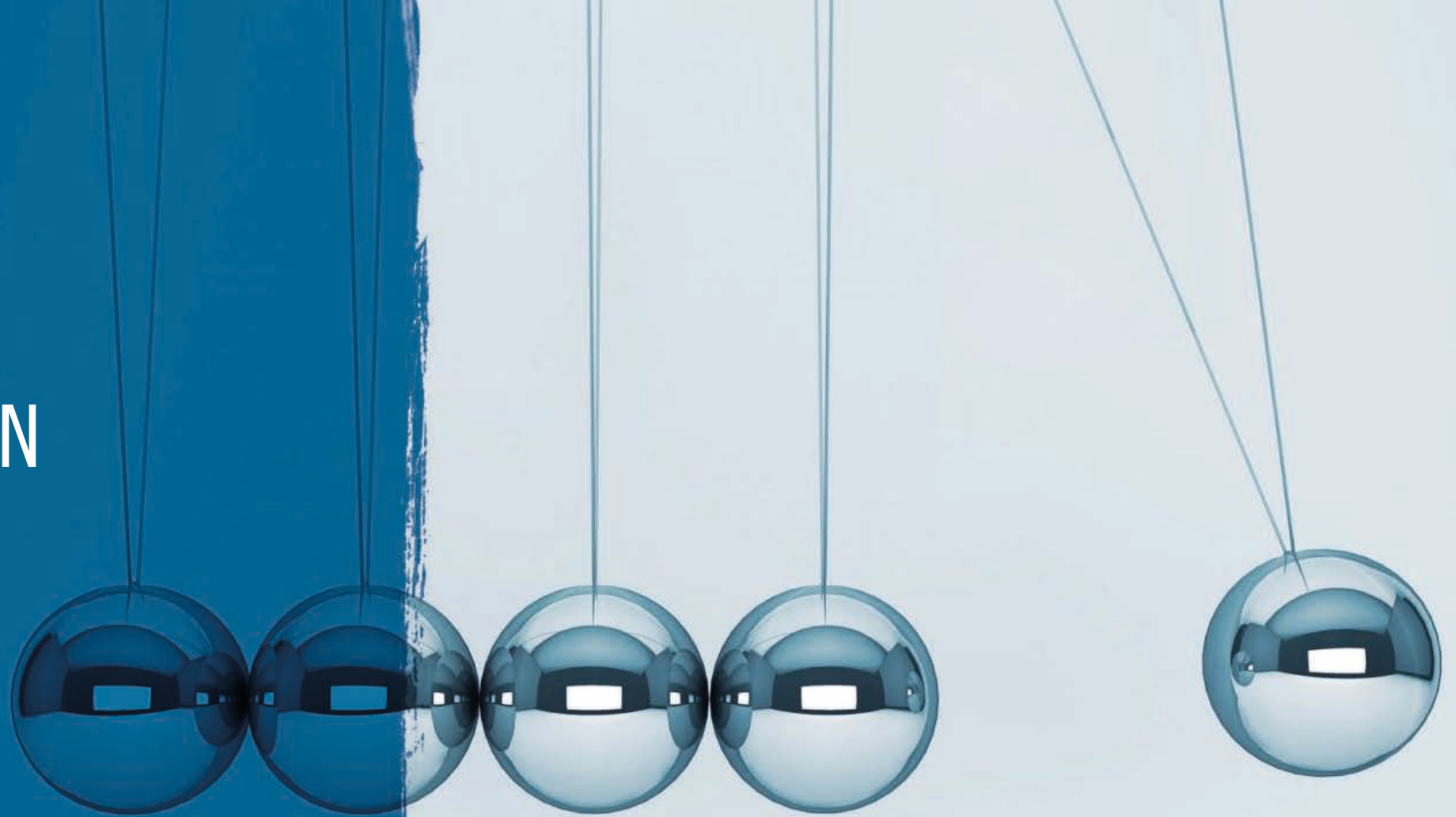


**ONLINE
CERTIFICATION
PROGRAMME
ON IMPACT
EVALUATION
OF POLICIES,
PROGRAMMES AND
PROJECTS**

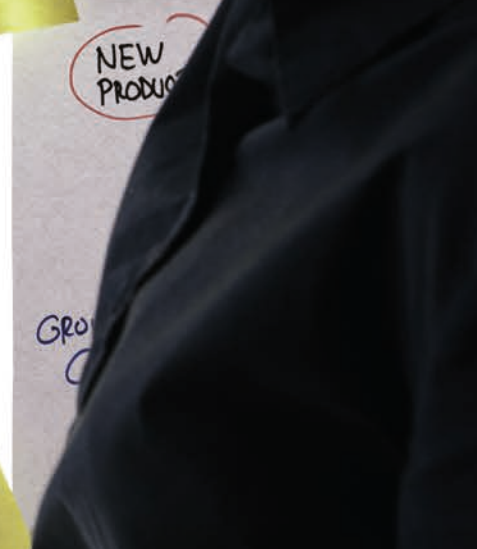
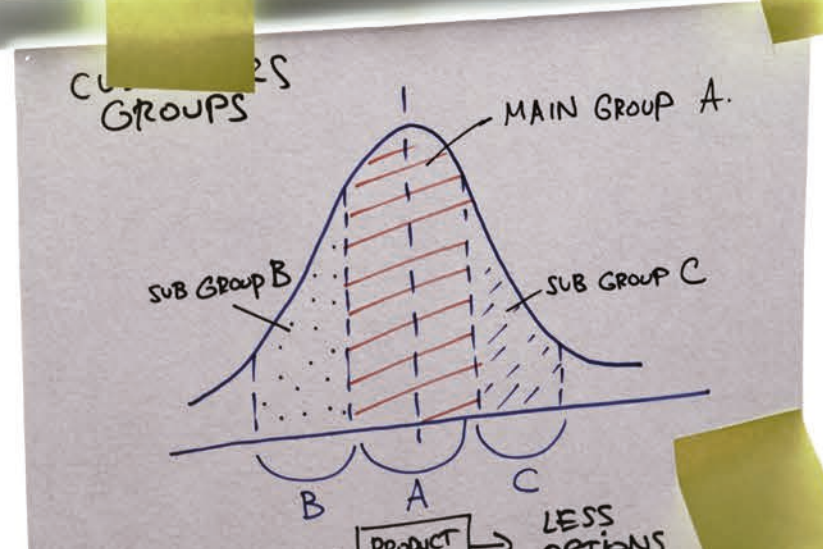
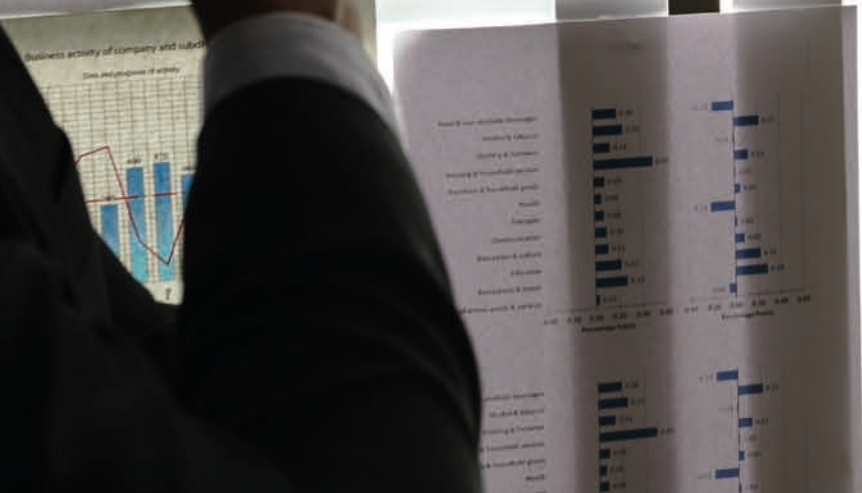
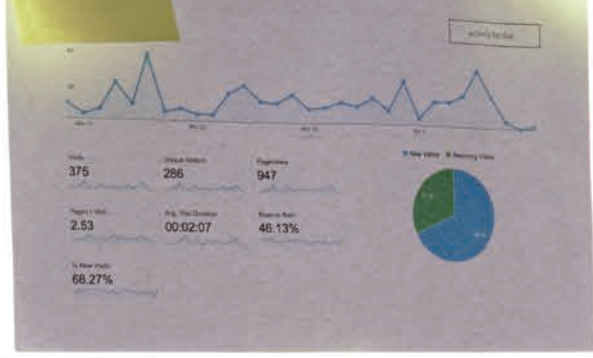




Overview

This tutor-based online certification programme provides a practical approach to design, conduct and interpret impact evaluations. It brings together researchers, evaluation experts and development practitioners in a collaborative and instructive online space

Are you ready to become a certified impact evaluation specialist?



Why a certification programme on impact evaluation of policies, programmes and projects?

- Conducting rigorous impact evaluations to attribute the positive effects of an intervention and generate useful information on their cost-benefits is essential for policy-makers.
- It can help us to understand whether or not these interventions have had an impact, how large the impact was, who has benefited, in which circumstances it worked, how cost-effective they were, and ultimately provides the basis for sound policy making and effective development assistance.
- Evaluating impact is also particularly important in the current financial context in which public sector resources are scarce; impact evaluations generate new knowledge that then provides a critical input to the appropriate design of future projects, programmes and policies.
- Recognising the need to support the capacity to conduct and interpret impact evaluations, the ILO International Training Centre (ITC-ILO) is organising an online course on impact evaluation of Policies, Programmes and Projects.



What will I be able to do?

Work with your peers and expand your international network to access new resources, hone your skills and apply them immediately:

- Identify and engage relevant stakeholders throughout the impact evaluation process using technical and soft skills
- Select the most appropriate impact evaluation methodology to respond to the unique context of the intervention and to the prevailing constraints of data, time and budget.
- Design a customised impact evaluation scheme for the unique context of a development intervention of your choice.
- Build an operational plan to conduct the impact evaluation
- Collect, process, and analyse data to evaluate impact using quantitative and qualitative approaches
- Use impact evaluation results for informing decision-making and economic analyses.





What certification will I get as a successful candidate?

- You will obtain a certificate of achievement once you have completed successfully the programme requirements.
- This certificate will demonstrate that you possess the right knowledge, skills and attitudes to design, plan, budget and conduct impact evaluations.
- At the end of the programme, you will have designed and performed all functions to conduct an impact evaluation as part of the certification programme - a great addition to your CV!

Why should I join?

This course is delivered through distance learning and deployed on the ITCILO e-campus. It frees you from the classroom and gives you the flexibility to complete the learning modules at your own pace and to carry-through weekly assignment within your schedule.

- Evidence-based management and impact evaluation skills are essential to professionals working in the public and development sectors.
- Employers that sponsor participants obtain the possibility to create an impact evaluation scheme for one of their development interventions.
- Successful participants receive a professional certification attesting their capacity to effectively design and conduct impact evaluation.
- The programme was developed and is implemented by evaluation experts and practitioners, researchers and development cooperation managers.
- Participatory activities include self-guided modules, webinars, online forum, practical assignments, individualized coaching, and tutoring.
- Participants get permanent access to the e-Campus portal on impact evaluation, training material, and references.

Who takes this course?

- Monitoring and evaluation specialists;
- Independent evaluators;
- Researchers;
- Project coordinators and programme managers;
- Donor staff appraising and evaluating projects and programmes;
- Policy-makers;
- Non-governmental organization officials involved in monitoring and evaluating.



What are the programme objectives?

Specifically, the training will serve the following objectives:

- Improve understanding of concepts and methods to design an impact evaluation based on a counterfactual or based on qualitative data;
- Assess the cost-effectiveness of development interventions;
- Identify impact evaluation options that recognize budget, time and data constraints, and that best suit the needs of specific programmes, countries and institutional context;
- Strengthen the technical capability to understand, interpret and identify the pros and cons of quantitative impact evaluations (experimental and quasi-experimental design), qualitative impact evaluations and costs-benefits analysis.
- Analyze data to perform impact evaluations and cost-benefits analysis.

What does the programme contain?

Identify areas of improvement and brush up on your technical and managerial skills:

- Evaluations of impacts: the recurring dilemma of attribution versus contribution
- Quantitative and qualitative approaches to impact evaluations
- Experimental and quasi-experimental impact evaluation design
- Contribution, correlation, and longitudinal studies to evaluate impacts
- Methods of data collection, processing and analysis for impact evaluations
- Managing and utilizing the impact evaluation for decision making and development of new knowledge
- Data analyses: impact evaluation, cost-effectiveness and cost-benefit analyses.





Funded by the European Union

تمويل من الاتحاد الأوروبي



International Labour Organization



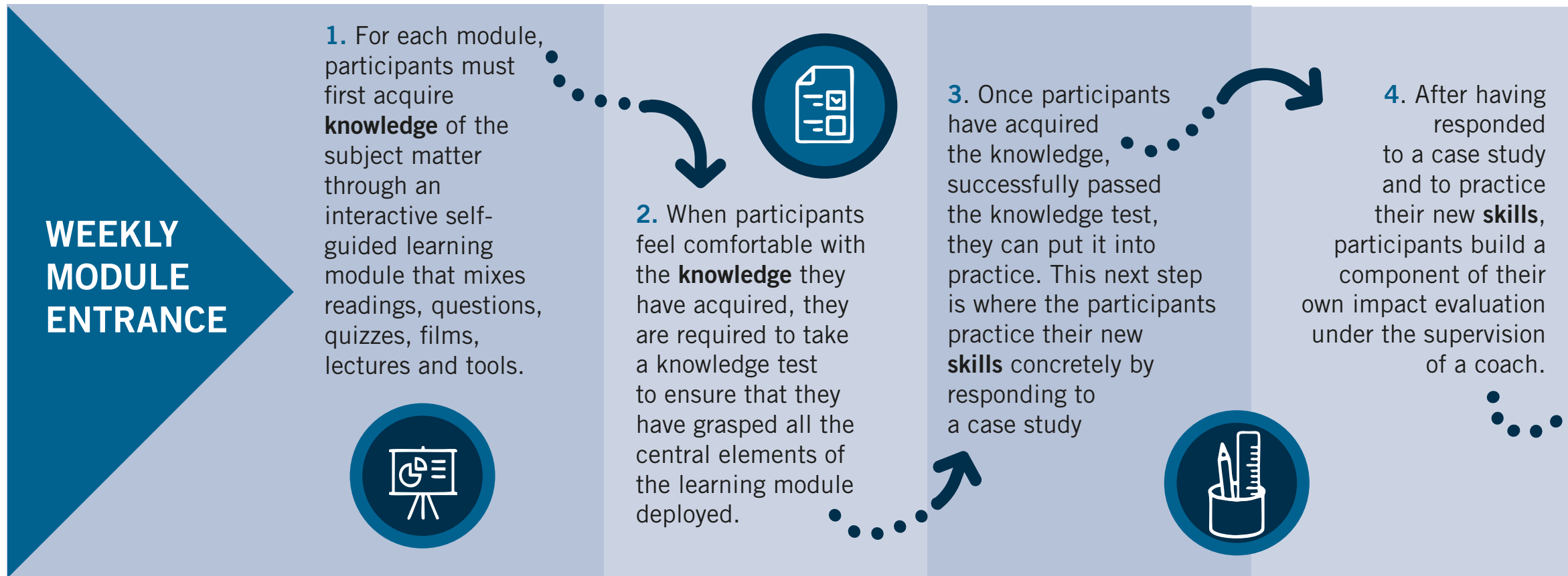
Funded by the European Union

تمويل من الاتحاد الأوروبي

Detailed themes

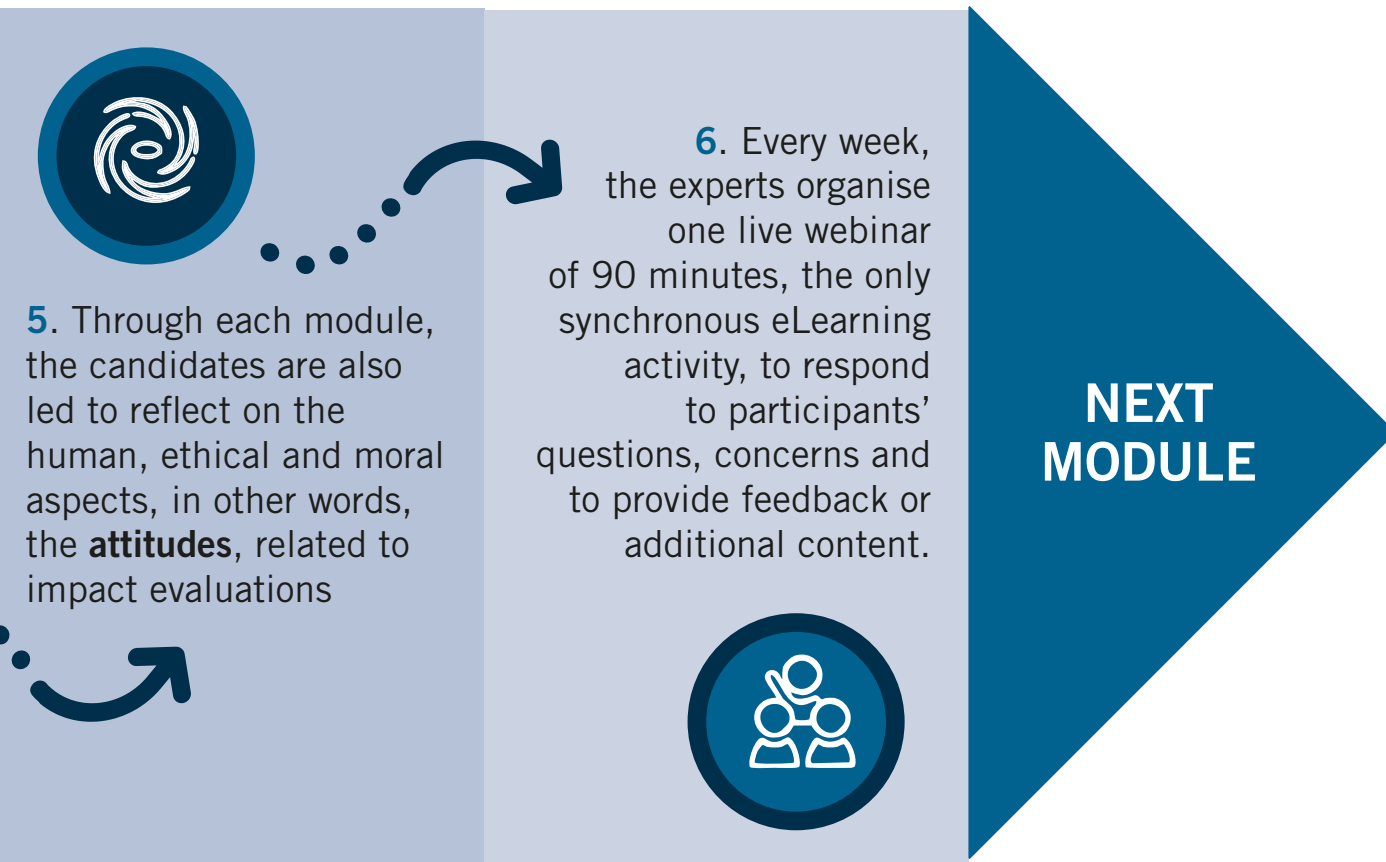
- General concepts and considerations for evaluation
- Selecting the right approach and methodologies to design an impact evaluation
- A step-by-step approach to designing an impact evaluation
- Conceptualization of the impact evaluation scheme: purpose, scope, impact evaluation questions, and methodology
- Plan and use data collection methods and data management in the context of impact evaluations
- Analysis of quantitative and qualitative data to assess programme or project intervention causality
- Organizing the impact evaluation: contracting and managing consultants
- Data collection and analysis
- Reporting, dissemination, and use of impact evaluation conclusions
- Engaging stakeholders in impact evaluations

What approach and methodology is used to deliver the online certification programme?



Assessing the certification programme candidates

- Each week, participants build or rework a component of their own impact evaluations, these single pieces are assessed and graded all along the implementation of the programme.
- Nevertheless, to assess the coherence and interdependences between the learning objectives, participants are ultimately required to assemble all elements to complete and document a plan to conduct an impact evaluation.
- It is through this final document that programme assessors can ultimately perform the certification of impact evaluation specialists.





Who is behind the programme?

The content experts behind this course are ITCILO senior monitoring and evaluation specialists and consultants/experts in impact evaluations.

Conditions to participate

WHAT ARE THE TECHNICAL REQUIREMENTS NEEDED?

For an interactive and successful learning experience, you need a computer with a good internet connection and speakers, as this course uses multimedia often.

HOW MUCH DOES IT COST?

Tuition: Euros 960



INTERNATIONAL TRAINING CENTRE OF THE ILO
Sustainable Development Programme
Viale Maestri del Lavoro, 10
10127 Turin – Italy
sdp@itcilo.org
+39 011 693 6512

Design and layout by the International Training Centre of the ILO, Turin – Italy

Cover photo: Cover photo: © Alexander Kharchenko